



ASPIRATION & INNOVATION

Fiscal Year 2021 Five-Year Capital Outlay Plan



**“Here again in the words
of Andrew Carnegie,
there will be erected
‘ladders upon which the
aspiring can rise.’”**

**Oakland University founder
Matilda Dodge Wilson**

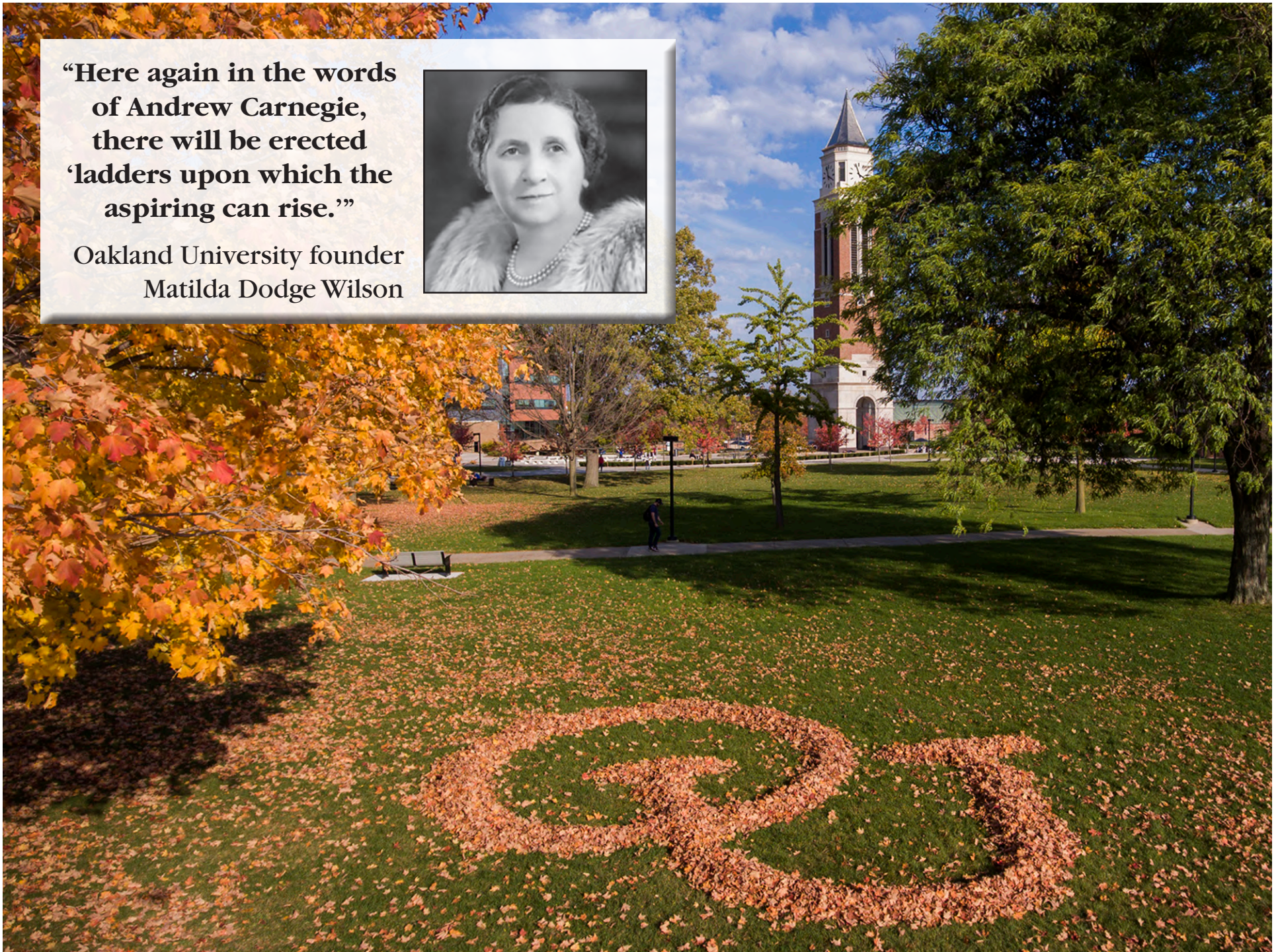


Table of Contents

I. Mission Statement	4	III. Staffing and Enrollment (continued)	
		Figure 6 - General Fund Square Feet per Student in Michigan	44
II. Instructional Programming		Future Staffing Needs	45
An Engaged University	5	Average Class Size	45
A Leading University	6		
A Growing University	7	IV. Facility Assessment	
Applied Research and Economic Development	9	Utilization Rates	46
Partnerships	11	Mandated Standards	46
Instructional Technology	13	Functionality	46
Technological Enhancements	15	Replacement Value of Facilities	49
Cultural and Performing Arts	17	Utility Systems Condition	49
Community Outreach	19	Facility Infrastructure Condition	50
Academic and Student Life Enhancements	20	Land	50
Degree Programs	22	Buildings Obligated to the State Building Authority	51
		Classroom Utilization Reports	52
III. Staffing and Enrollment		Facility Condition Assessment	125
Figure 1 - Faculty and Staff Full-Time Equivalent	34	V. Implementation Plan	
Figure 2 - Student Credit Hours	36	State Funding Request	140
Figure 3 - Degrees Awarded by Program	38	University Funded Priorities	140
Figure 4 - Enrollment Trends	40	Future Projects Under Construction	142
Figure 5 - Enrollment Projections	42	Plant Renewal/Deferred Plant Renewal	142

Mission Statement

Oakland University cultivates the full potential of a diverse and inclusive community. As a public doctoral institution, we impact Michigan and the world through education, research, scholarship, and creative activity.

Vision Statement

Oakland University will unlock the potential of individuals and leave a lasting impact on the world through the transformative power of education and research.

Strategic Goals

1. Foster student success through a robust teaching and learning environment and comprehensive student services.
2. Be recognized as a strong research and scholarly environment focused on creative endeavors and on the discovery, dissemination, and utilization of knowledge.
3. Become a leader in serving the needs and aspirations of our communities and region through expanded community relationships, institutional reputation and visibility, and engagement.
4. Advance diversity, equity, and inclusion in an environment of mutual trust and respect at all levels of the institution and facilitate opportunities and success for all community members.



Instructional Programming

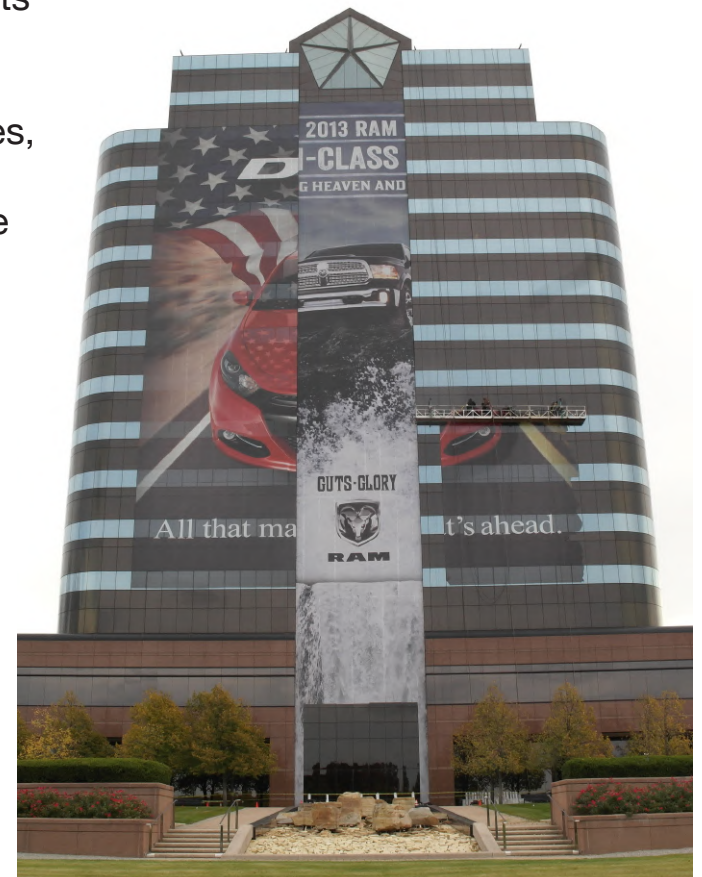
Oakland University is a doctoral/research University located in Rochester, Michigan, within Oakland County. Through unique and distinctive academic experiences, Oakland is preparing students to make meaningful and substantial contributions to the workplace, academia and the community.

An Engaged University

Oakland University is the only comprehensive, doctoral-level university located in Oakland County, Michigan. Recognized as one of the country's 131 doctoral research universities by the Carnegie Foundation for the Advancement of Teaching, the University offers students opportunities to work directly on research with expert faculty.

Through a multitude of partnerships with hospitals, Fortune 500 companies, individuals, cities, government agencies and educational institutions, Oakland helps communities solve problems and build thriving, sustainable businesses. These associations reward students with internship and co-op opportunities and provide University researchers access to the latest technology tools. Oakland's leadership with these partnerships also significantly impacts economic development and commercialization opportunities.

Oakland, in partnership with Beaumont Health System, opened the first M.D.-granting medical school in Oakland County with an inaugural class of 50 students in August 2011. The fall 2019 cohort enrollment includes 125, and the school recognized 130 new doctors at the May 2019 commencement. The first new medical school started in Michigan in a generation, the Oakland University William Beaumont School of Medicine (OUWB) is expected to help boost the local and regional economies by generating new jobs and attracting medical, business



and academic leaders from around the nation. OUWB was designed to transform medical education by emphasizing holistic physician development – a patient-centered approach to the delivery of health care that is grounded in evidence-based medical science.

In related academic disciplines, Oakland offers strong undergraduate programs founded in the liberal arts and basic sciences. The University is widely recognized for excellence in biomedical sciences and other health-related programs. Oakland is home to the School of Nursing and School of Health Sciences, the world renowned Eye Research Institute, and highly-regarded programs in bioengineering, informatics and nanotechnology; health and environmental chemistry; medical physics and biological communication.

Oakland's other professional schools (Business Administration, Education and Human Services, Engineering and Computer Science), as well as the College of Arts and Sciences, have been recognized nationally for a wide array of accomplishments.



A Leading University

Oakland University is recognized as a student-centered, doctoral research institution with a global perspective. It engages students in distinctive educational experiences that connect to the unique and diverse opportunities within our region and beyond.

Through faculty-driven and student-engaged research, scholarship and creative activity, Oakland University advances knowledge and art in a diverse and inclusive environment. Oakland is also an active community partner, providing thriving civic, cultural, and recreational opportunities and valuable public service.

In addition to equipping graduates with a broad base of knowledge and top-notch intellectual and experiential

opportunities, Oakland is equally dedicated to the development of students in all aspects of their lives. Through a carefully thought-out collection of campus life experiences, the University gives students opportunities to conduct research and participate in internship and co-op experiences.

A Growing University

Oakland continues to thrive as a public institution with:

- A 22 percent increase in overall enrollment over the past 15 years
- Increased underrepresented minority student enrollment since 2014
- 877 international students enrolled in fall 2017
- Six residence halls and three apartment complexes that house 16 percent of the student population

Oakland has continued to keep pace with growth by providing new and advanced academic, research and support facilities. Recent capital projects have included:

- construction of the Human Health Building
- construction of the Engineering Center
- renovation of Hannah Hall laboratories
- renovation of O'Dowd Hall to provide additional classrooms and space for the Oakland University William Beaumont School of Medicine
- creation of the First Year Advising Center
- construction of the 504-bed Oak View residence hall, which includes a new home for the Honors College
- upgrades to the Recreation and Athletics Outdoor Complex, creating a track and field complex, tennis courts, and synthetic turf soccer fields
- construction of a second parking structure with 1,245 spaces
- construction of an Athletic Dome through a public-private partnership to provide an indoor athletic



Oakland University Engineering Center

practice facility

- completion of the 151-foot-tall, 49-bell Elliott Tower (100 percent funded by Hugh and Nancy Elliott)
- major renovation of the Oakland Center, a student union facility that includes 60,000 square feet of student-focused spaces
- completion of Hillcrest Hall, a student housing facility that includes 750 beds and a dining facility with the capacity to accommodate 750 residents, students, and staff. The building also includes four general-purpose classrooms with 200 seats

A campus master plan accounts for expected growth and includes:

- renovation and restoration at Meadow Brook Hall
- a third parking structure
- housing facilities to expand the number of beds on campus
- the identification of potential building sites
- a research and development park
- a new humanities facility

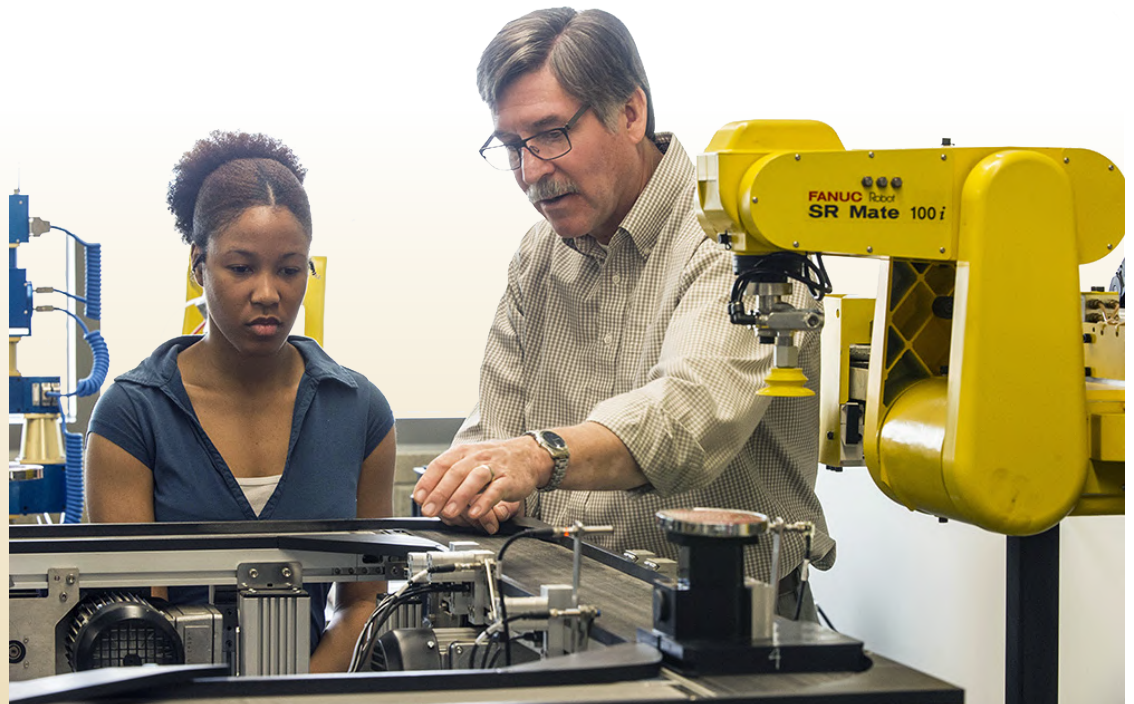


Several upgrades, renovations and technological improvements to various classrooms, laboratories and common areas were recently completed. Primary laboratories to receive extensive renovation were in chemistry, biology, physics, and art and art history – all programs that have experienced large increases in student enrollment or are key components of Oakland's biomedical and health care academic offerings.

Applied Research and Economic Development

Oakland offers knowledge, resources and programs that help companies grow. With its research labs, facilities, faculty and students, the University assists companies in transforming ideas into new business developments, turning dreams into reality and giving vitality to vision. At the OU INC and Macomb-OU business incubators, the University is committed to assisting startups and spin-offs to locate and secure technology development, business planning and capital acquisition, as well as providing opportunities for the licensing of Oakland University's intellectual property. To foster emerging discoveries, the University features several noted research centers, including the:

- Eye Research Institute (ERI)
- Fastening and Joining Research Institute (FAJRI)
- Galileo Institute for Teacher Leadership
- Center for Autism
- Center for Biomedical Research (CBR)
- Automotive Tribology Center (ATC)
- Center for Applied Research in Musical Understanding (CARMU)
- Center for Integrated Business Research and Education (CIBRE)
- Center for Robotics and Advanced Automation (CRAA)
- Center for Social and Behavioral Research (CSBR)



- Clean Energy Research Center (CERC)
- Ken Morris Center for the Study of Labor and Work
- Institute for Stem Cell and Regenerative Medicine (ISCRM)

OU SmartZone Business Accelerator: OU INC is a SmartZone Business Accelerator in collaboration with the City of Rochester Hills and Michigan Economic Development Corporation, and partners with Oakland County and Automation Alley. OU INC provides entrepreneurial resources and strategic business solutions for developing business ventures and accelerates ideas to market. It fosters a healthy environment for the growth of new startup companies and provides support for existing entities through its facility and resources. The OU INC facility provides business resources, including those offered by the Clean Energy Research Center and the Integrated Resource Center, as well as access to the expertise and skills of staff, faculty, students and corporate partners.



Part of the Velocity Collaboration Center – a joint venture between Oakland University, Macomb County and the city of Sterling Heights – the **MAComb-OU INCubator** provides entrepreneurial resources, business solutions, access to student interns and proactive support to businesses at every stage to help startups on their path to success. The goal of the incubator is to create jobs and advance business development by identifying sources of necessary financing for growth; helping develop business strategy; consulting; and providing access to appropriate rental space, shared business services, equipment and technology support services in the areas of defense, homeland security, advanced manufacturing and technology.

Fastening and Joining Research Institute (FAJRI): A collaboration between Oakland University, the U.S. Congress, the U.S. Army Tank Automotive Research and Engineering Center (TARDEC), the National Science Foundation and Fiat Chrysler Automobiles, FAJRI is an externally funded, academic, nonprofit research facility that is solely dedicated to exploring fundamental and applied research to develop and disseminate new technology for the fastening and joining of materials such as metals, composites, polymers and biomaterials.

Center for Robotics and Advanced Automation: Funded by the National Science Foundation, the Big Three automotive companies and the Department of Defense, the center works on smart control technology with industrial and defense applications, intelligent robotics, homeland security technology, suspension systems, digital shearography, and global satellite communication technology and systems.

Eye Research Institute (ERI): This unique center of ophthalmic research collaborates with the department of ophthalmology at Beaumont Health System on research and provides a joint ophthalmology residency and fellowship program. Since 1968, ERI scientists have received over \$50 million in support from private and federal health agencies.

Center for Biomedical Research: This center provides core facilities and pilot funding for the applied biomedical research efforts of Oakland University's life scientists. Key research includes eye diseases, chemical toxicology, medical physics and biological communication.

Partnerships

Oakland has leveraged its unique Auburn Hills/Rochester Hills/Rochester location in the heart of Michigan's technology and automotive corridor by forging strategic partnerships with hospitals, Fortune 500 and international companies, individuals, cities, government agencies and educational institutions located as near as Southeast Michigan and as far as other countries. The benefits of these associations are far-reaching: students are rewarded with internship and co-op opportunities, University researchers have access to the latest technology tools, and the region benefits through new business opportunities and a stronger economy.

Eugene Applebaum College of Pharmacy and Health Sciences: An alliance between Oakland University's School of Health Sciences and Wayne State University (WSU) provides Oakland's undergraduates a unique opportunity to earn a doctorate in pharmacy. Students can earn their bachelor's degree at OU taking pre-pharmacy courses. During their senior year at OU, students take pharmacy



classes at WSU. Their senior year at OU is also their first year at WSU, giving students the opportunity to complete a doctoral program in seven years instead of eight, saving time and money.

Wayne State University Law School (Wayne Law): Oakland University's Department of Political Science in the College of Arts and Sciences, and the Bachelor of Integrative Studies Program, have both partnered with Wayne Law to offer undergraduate students the opportunity to obtain two degrees in a shorter time frame. This will allow students from premier and accredited institutions to obtain degrees at a lower cost. During the fourth (senior) year at Oakland University, students will attend Wayne Law and begin their first two semesters of credits at Wayne Law, transferring back to OU for completion of their bachelor's degree. Students must take the Law School Admission Test and meet all other Wayne Law admission requirements.

Ascension Providence Rochester: Ascension Providence Rochester has funded a \$2 million endowed professorship in Oakland University's School of Nursing that is changing the clinical education and training of nursing students. The nursing professorship conducts patient-focused research on the science and best practices of nursing, an area that has not received much attention to date. Students in the program conduct all of their clinical rotations at Ascension Providence Rochester using the relationship-based care (RBC) model. RBC moves from an individual expert dynamic to one of engaging patients, identifying options, relaying experiences and empowering patients and their families to make the best treatment decisions.



OU Anton/Frankel Center: Oakland University expanded its reach in Macomb County with the opening of the Anton/Frankel Center (AFC) in fall 2011. With 25,422-square feet of space to house classrooms, offices for advising, student support services, faculty and staff, the AFC signals OU's continued commitment to bringing exceptional academic opportunities to the people of Macomb County. Programs offered at the AFC include bachelor's degrees in criminal justice, psychology, marketing and social work; and master's degrees in public administration and business administration.

The University of Botswana: Oakland University's Department of Counseling in the School of Education and Human Services, in partnership with the University of Botswana (UB), provides student and faculty exchanges, video conferences, and partnerships in research, scholarship, teaching and service.

Israel's Max Stern Academic College: Oakland University offers global experiences for students and faculty through a myriad of overseas programs, including a partnership with Max Stern Academic College in Emek Yezreel, Israel. Students and faculty on both campuses will experience different cultures through research opportunities, academic coursework and student life.



Dennis Pawley (center) of the Pawley Learning Institute

The Pawley Learning Institute: Established through a gift from Dennis Pawley, an OU alumnus and former chair of the OU Board of Trustees, the Pawley Learning Institute provides instruction and research on concepts and training that improve organizational practices in business, education and public service sectors.

Instructional Technology

Access to user-friendly instructional technology resources in the classroom is a standard expectation of Oakland's faculty and students. All general purpose classrooms and a growing number of conference rooms and labs are equipped with enhanced instructional technology resources.

University classrooms are equipped with the following:

- Multimedia workstation containing: a PC computer hardwired to campus network; a digital document camera; an electronic whiteboard; a DVD player; an interface to plug in a user provided laptop computer or mobile device, an interface to plug in an accessory analog audio/video device; sound system; and an electronic control system for managing the room's systems and components.
- Ceiling mounted video/data projection system connected to the multimedia workstation
- Wireless network access

- A lecture capture system (Panopto) is also available to record classroom instruction and post recordings online for student review
- Room microphones and video cameras are also either currently installed or available on an as-needed basis

Oakland provides course offerings via distance education. The three modes of delivery include live two-way interactive video between two or more sites, synchronous web-based instruction to individual students and asynchronous web-based online learning. The Internet is the current transmission vehicle for the University's distance education course offerings.

Software based video collaboration tools such as WebEx and Google Meet are also available for the University community to conduct business at a distance. These types of technologies save time and money by providing a communications tool that allows for the sharing of voice, video and content between two or more computers or mobile devices. The growth in web based learning and communications models will continue to expand in the foreseeable future.

Oakland University uses Moodle for its web-based Learning Management System (LMS). Moodle can be used as a full web-based solution where no face-to-face teaching is required or as a web-supplemented course resource that enhances the standard face-to-face classroom contact between faculty and students. Moodle offers online activities such as discussion boards, chat, quizzes, grade book, file storage and display, journals, workshops, and lessons. Moodle is also the portal to access lecture capture recordings. Another separate instance of Moodle is supported via ePortfolio.

Another teaching tool being utilized is 3D spaces and virtual reality. Second Life is an experimental island where several faculty meet their classes. E-Learning and Instructional Support opened up their Virtual Reality Lab in Fall 2016, and are working with faculty on innovative ways to utilize virtual reality in higher education for



an immersive learning experience.

During the Winter 2019 term, Oakland offered 167 course sections that are fully online to 3,873 distinct students (~21% of total student body). There were 597 courses (~19% of all course sections) that provided some level of web-supplemented activity. Oakland also offers 16 online degree and certificate programs. Akindi, i>clicker and other software are supported centrally for grading exams and processing course evaluations.

Technology Enhancements

Oakland University is dedicated to enhancing education through the use of contemporary and emerging technologies and continues to commit significant resources to technological enhancements, including:

- Complete administrative software suite
- Online registration
- Extensive wired and wireless network to all classroom buildings and surroundings
- Elliott Hall of Business and Information Technology, a 74,000-square foot, technology-rich facility
- The Pawley Hall of Education & Human Services Building with 24 enhanced technology classrooms
- Interactive television and video conferencing capability to supplement instruction and administrative program activity
- Online web-based learning management system utilizing Moodle
- Other teaching and learning software, such as Panopto, Akindi, Scantron, Second Life, Camtasia, i>clicker, and Adobe Captivate
- A Virtual Reality lab and lightboard in the e-LIS office in Kresge Library
- An Information Commons in Kresge Library with a significant number of computer work stations for the patrons
- A remodeled O'Dowd Hall has become the home of the Oakland University/William



Beaumont School of Medicine, and includes the addition of significant technology enhancements within classrooms and meeting spaces.

- Oakland's Macomb County site is housed within the Anton/Frankel Center located in Mount Clemens and provides 25,422 square feet of classroom, office and meeting space.
- Major classroom renovation projects that included significant technology enhancements in older campus buildings continue to be a priority objective.
- A Human Health Building (HHB) provides the University community with an all-digital classroom technology systems within all instructional spaces, a state-of-the-art Nursing SIM lab, and many technology enhancements within specialty laboratories. The HHB has been recognized as a LEED Platinum building, the first Platinum building on a University campus in the State of Michigan.
- An Engineering Center building opened in the fall of 2014 with state of the art instructional facilities, labs and resources.
- Nine instructional classrooms opened during the fall of 2015 which were created within existing University space that was repurposed and remodeled to include the most current instructional technology resources.
- Oakland is a partner with the City of Auburn Hills in the collaboration of a University Center which opened in January of 2014.
- The University is also partnering with the Pontiac Public Schools system and during the summer of 2015 created a collaboration center and classroom in downtown Pontiac.



- During the summer of 2017 five general purpose classrooms were converted to active learning classrooms with new furniture that supports group work and collaboration activities. In addition, new technology was added to support Modern Languages courses and lab activity with a focus on audio listening and recording.
- Progress with Accessibility has been made during the 2017-18 academic year with a focus on faculty development and the creation of instructional content. In addition,

websites are being updated across the campus, and video captioning processes are being defined along with vendor support identified. A committee was formed on Universal Design in Learning (UDL) to further the University's efforts to improve Accessibility in multiple ways.

Cultural and Performing Arts

Oakland's contribution to the arts has moved beyond local boundaries to secure a place of prominence in the region. Historically, OU has had a strong performing arts program with record-high enrollment numbers.

The **School of Music, Theatre and Dance**, formerly the Department of Music, Theatre and Dance, offers more than 140 student and faculty performances throughout the academic year. Guests enjoy everything from musicals and intimate recitals to experimental plays and innovative dance performances. OU has earned a reputation for taking artistic risks, developing gifted artists, nurturing arts partnerships and achieving new heights of quality and professionalism.

Meadow Brook Hall is the sixth largest historic house museum in the United States and is renowned for its superb craftsmanship, architectural detailing and grand scale.





Built between 1926 and 1929 as the residence of Matilda Dodge Wilson (widow of auto pioneer John Dodge) and her second husband, lumber broker Alfred G. Wilson, the 110-room, 88,000-square-foot, Tudor-revival style mansion is complete with vast collections of original art and furnishings. In 2012, the U.S. Department of the Interior designated the hall a National Historic Landmark, the highest recognition for historic properties in the United States.

For more than 40 years, the **Oakland University Art Gallery (OUAG)**, housed in the Department of Art and Art History, has delivered diverse, museum-quality art to Metro Detroit audiences. From September to May, the OUAG presents up to six different exhibitions – from cutting-edge contemporary art to projects exploring historical and global themes. The gallery also offers lectures, performances, tours, special events and more. Nearly 15,000 people visit OUAG each year to experience art and cultural programs.

OU's **Meadow Brook Amphitheatre** hosts today's top concerts including rock, alternative, adult contemporary, pop, country, and rhythm and blues; a wine and food festival; stand-up comedians; and family entertainment.



Community Outreach

In the more than 10 years since Oakland University initiated a formal partnership with the **City of Rochester** through the Rochester Downtown Development Authority (DDA), much has been accomplished with new initiatives added over time. The partnership presents many opportunities for the OU community to benefit from joint educational and cultural programming. Areas of emphasis for students, faculty and alumni have included employment, internships, research and development projects, business development assistance, community service projects, promotions and business discounts, and opportunities to showcase the arts, theatre and music to complement classroom work. The University annually hosts the Rochester Area Chamber of Commerce's Regional Outlook Luncheon and also maintains a support partnership with the Rochester Older Person's Commission. Students, alumni, faculty and staff enjoy discounts at dozens of participating stores and restaurants through the OU GO card. The University also partners with the Rochester Regional Chamber of Commerce for joint programming and assistance.

Oakland proudly partners with its other neighboring communities including **Auburn Hills, Pontiac and Rochester Hills**. OU and the Pontiac community have a long history together through programs such as GEAR UP (Gaining Early Awareness and Readiness for Undergraduate Programs), which helps students in the Pontiac as well as Oak Park school districts; Project Upward Bound, which helps 120 students each year finish high school and develop the social and cultural skills needed to realize their dreams and succeed in college and society; and through the Wade H. McCree Jr. Incentive Scholarship program, which assures that students who meet specific criteria will be awarded a full-tuition scholarship to Oakland when they graduate from high school.

Since 2014, OU faculty and staff, Pontiac business owners, representatives from non-profit agencies, Pontiac schools, hospitals and the Mayor's office as well as Pontiac residents and enthusiasts have collaborated in a comprehensive community advancement project called the Pontiac Initiative. All told, 74 partner organizations and roughly 500 individuals have embarked on more than



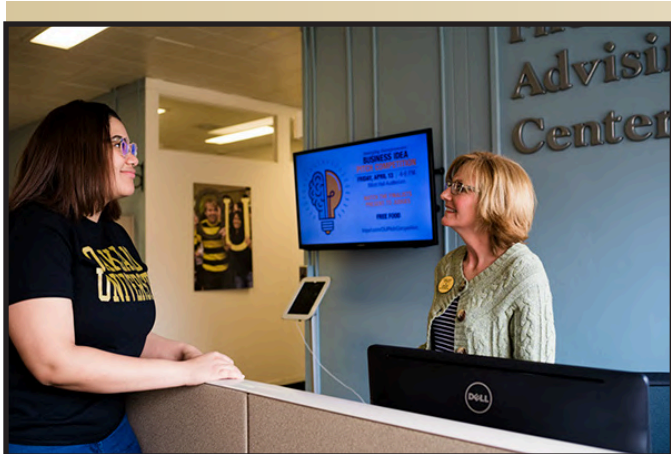
two-dozen projects focusing on education; civic engagement; business, workforce development and entrepreneurship, health care and wellness; arts and culture; and neighborhoods and non-profits.

Recently, Oakland initiated a laboratory school initiative that places University faculty and education students in Pontiac schools to help institute and maintain instruction best practices in the classroom. The initiative is developed after a highly successful model implemented in a neighboring Auburn Hills school. In addition, Oakland University and Pontiac Schools are also working together to make Parent University a valuable community resource with a program that encourages families to connect to schools and the community, providing resources that help parents become full partners in their child's education.



Oakland University is involved in various community service efforts in **Macomb County**, including the Let's Move Festival of Races in downtown **Mount Clemens** and emergency preparedness education programs. In addition, Oakland University students and staff, including the OU Dance team, Cheer team and the Grizz, participated in the annual Macomb County Santa Parade last year.

In 2018, members of the Oakland University community opened their hearts and their wallets, making generous gifts to the All-University Fund Drive. A total of 1,163 faculty, staff and retirees contributed \$576,921.



Academic and Student Life Enhancements

All students should have the benefit of academic support services, especially mentoring and small learning communities, aimed at helping them make the necessary academic and social adjustments to achieve collegiate success.

OU's **First Year Advising Center** connects new students with University advisers, peer mentors, graduate assistants, faculty and various support services on campus to provide a more effective student experience,

especially during the critical first year.

The award-winning **Oakland University Trustee Academic Success (OUTAS)** scholarship program is a national model for retaining and graduating a diverse group of high-achieving university students. OUTAS was established to counter the declining rates of minority retention, graduation and student performance. In recent years, OUTAS students have graduated at record rates that are as high as 35 percentage points above University averages.

The **Writing Center in Kresge Library**, established through a leadership gift from OU Professor Emeritus of English Joan Rosen, assists hundreds of students each year. The Writing Center provides assistance to students to develop and incorporate effective writing and communication skills in all subject areas.

Oakland's **Honors College** offers highly motivated students an intimate, intellectually friendly and challenging atmosphere featuring small classes of 10 to 20 students. They pursue a specially designed core of general education courses in art, literature, western civilization, social science, global perspectives, mathematics, logic, computer science, natural science and technology. The recent opening of the Frances M. Moceris Scholars House will allow high-achieving scholars to also develop leadership qualities including empathy, collaboration and vision through specialized programming. Overall, the Honors College has seen a 350% increase in enrollment over the last eight years and current freshmen achieved an average high school grade point average of 3.97.

OU has more than **300 student organizations** that encourage student involvement and social opportunities.

The **Recreation and Athletics Center** hosts a number of activities throughout the year in which students may get involved, including intramural and club sports, group exercise classes and wellness-related programs. This multi-purpose facility draws more than 25,000 visits per month for recreational and sports programs.

New outdoor recreation and athletics facilities accommodate NCAA Division I athletic events including tennis and



track and field meets, club and intramural sports competitions, and a variety of fitness and recreational activities welcoming university students, faculty, staff and community visitors.

Oakland is dedicated to the development of students in all aspects of their lives. Through a carefully thought-out collection of campus-life experiences, the University gives students opportunities to conduct research and participate in internships and co-op experiences.

In 2016, the **Office of Student Success** and **Experiential Learning Center** was developed to embrace the University's mission to "engage students in distinctive educational experiences that connect to the unique and diverse opportunities within and beyond our region." The office supports student retention by helping students make the most of their second academic year, aiding those short on credits, guiding displaced workers through the workforce development system, providing assistance to those falling behind in a course and assisting in an overall effort to help student complete their degree.

Undergraduate Degree Programs

College of Arts and Sciences (113)

Bachelor of Arts – CASBA (66)

2810 Anthropology

2815 Anthropology – Modified w/Concentration in Linguistics

1055 Art History

1105 Biology

1230 Chemistry

1609 Chinese Studies

1450 Cinema Studies

1453 Cinema Studies/Filmmaking Specialization

2705 Communication

1420 Creative Writing

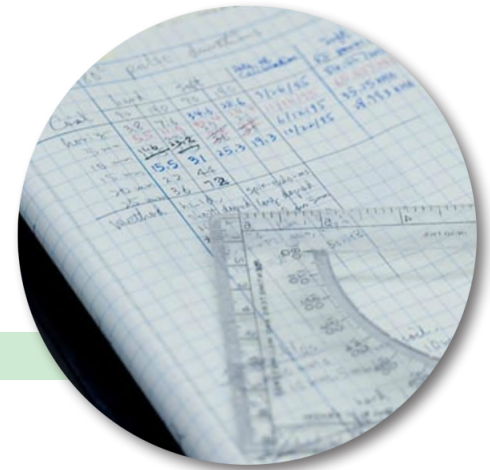
1421 Creative Writing, Specialization in Fiction



1422 Creative Writing, Specialization in Poetry
 1423 Creative Writing, Specialization in Screenwriting
 1424 Creative Writing, Specialization in Literary Nonfiction
 2875 Criminal Justice
 2880 Criminal Justice w/Special in Information Security and Assurance
 2881 Criminal Justice w/Special in Homeland Security
 2290 Dance
 2291 Dance Education
 3700 Economics
 1405 English
 1410 English – Modified w/Concentration in Linguistics
 1980 French Language and Literature
 1985 French – Modified
 2015 German w/Concentration in German Studies
 2010 German Language and Literature
 2020 German – Modified
 1096 Graphic Design
 1505 History
 1045 Independent Major
 2510 International Relations
 2511 International Relations, Specialization in Foreign Affairs and Diplomacy
 2512 International Relations, Specialization in Global Justice and Sustainability
 2516 Political Science, Specialization in Campaigns and Elections
 2517 Political Science, Specialization in Courts, Justice and Politics
 2040 Japanese Language and Literature



2045 Japanese – Modified
 1614 Japanese Studies
 2735 Journalism
 2060 Latin American Language and Civilization
 1625 Latin American Studies
 1700 Liberal Studies
 1705 Linguistics
 1710 Linguistics – Modified
 1805 Mathematics
 2205 Music
 2375 Philosophy
 2405 Physics
 2515 Political Science
 2605 Psychology
 2615 Psychology – Modified w/Concentration in Linguistics
 2744 Public Relations and Strategic Communication
 2820 Sociology
 2805 Sociology/Anthropology
 2825 Sociology – Modified w/Concentration in Linguistics
 2100 Spanish Language and Literature
 2110 Spanish – Modified
 1075 Studio Art – Specialization in Drawing
 1097 Studio Art – Specialization in Interactive Art and Technology
 1080 Studio Art – Specialization in Painting
 1085 Studio Art – Specialization in Photography
 2294 Theatre
 2130 Two Modern Languages
 2871 Professional and Digital Writing (formerly 2870 Writing and Rhetoric)



2865 Women and Gender Studies

Bachelor of Fine Arts – BFA (5)

- 2283 Acting
- 2290 Dance
- 2293 Dance Education and Performance
- 2285 Musical Theatre
- 2296 Theatre Design & Technology



Bachelor of Music – BM (11)

- 2360 Choral/General Music Education
- 2363 Choral/General Music Education/Performance
- 2362 Instrumental/General Music Education
- 2364 Instrumental/General Musical Education Performance
- 2265 Music – Instrumental Performance
- 2254 Music – Music Technology
- 2245 Music – Piano Performance
- 2247 Music – Piano Pedagogy
- 2248 Music – Piano Performance w/Special. in Pedagogy
- 2240 Music – Voice Performance

Bachelor of Science – CASBS (14)

- 1905 Actuarial Science
- 1835 Applied Statistics
- 1225 Biochemistry
- 1105 Biology
- 1125 Biology – Modified w/Specialization in Anatomy
- 1120 Biology – Modified w/Specialization in Cell-Molecular Biology



1130 Biology – Modified w/Specialization in Microbiology
1109 Biomedical Sciences
1111 Biomedical Sciences – w/Specialization in Anatomy
1230 Chemistry
1805 Mathematics
2420 Medical Physics
2405 Physics
2530 Public Administration and Public Policy

Bachelor of Science – ENVSCI (2)

1252 Environmental Science/Specialization in Sustainability and Res. Mgt.
1257 Environmental Science/Specialization in Environmental Health

Bachelor of Social Work – BSW (1)

2860 Social Work

K-12 Educational Programs (10)

2292 Dance Education w/K-12 Certification
1992 French w/K-12 Certification
2027 German w/K-12 Certification
2047 Japanese w/K-12 Certification
2122 Spanish w/K-12 Certification
1076 Studio Art – w/K-12 Specialization in Drawing
1099 Studio Art – w/K-12 Specialization in Interactive Art and Technology
1081 Studio Art – w/K-12 Specialization in Painting
1086 Studio Art – w/K-12 Specialization in Photography
1093 Studio Art – w/K-12 Specialization in Graphic Design



Secondary Education Programs (6)

1140 Biology w/Secondary Ed
1240 Chemistry w/Secondary Ed
1430 English w/Secondary Ed
1515 History w/Secondary Ed
1825 Mathematics w/Secondary Ed
2430 Physics w/Secondary Ed

School of Business Administration (15)

Bachelor of Science – SBABS (15)

3100 Accounting
3705 Business Economics
3710 Economics
3200 Finance
 Finance w/Special. in Wealth Management
3300 General Management
3400 Human Resource Management
3500 Management Information Systems
3510 Management Information Systems w/Specialization
 in Business Analytics
3520 Management Information Systems w/Specialization
 in Information Security Management
3600 Marketing
3806 Operations Management
3816 Operations Management w/Specialization in Supply Chain Management
3826 Operations Management w/Specialization in Lean/Quality Management
3836 Operations Management w/Specialization in Project Management



School of Education and Human Services (2)

Bachelor of Science (2)

4120 Elementary Education

4320 Human Resource Development

School of Engineering and Computer Science (9)

Bachelor of Science (2)

5020 Computer Science

5070 Information Technology

Bachelor of Science in Engineering (7)

5120 Computer Engineering

5140 Electrical Engineering

5185 Industrial & Systems Engineering

5160 Mechanical Engineering

5162 Mechanical Engineering w./Specialization
in Manufacturing

5164 Mechanical Engineering
w./Specialization in Automotive Engineering

5163 Mechanical Engineering
w./Specialization in Energy

School of Health Sciences (12)

Bachelor of Science (12)

6070 Applied Health Sciences



6171 Clinical and Diagnostic Sciences
6241 Exercise Science (Pending Board Approval)
6042 Environmental Health and Safety
6020 Health Sciences
6177 CDS: Medical Laboratory Science
6173 CDS: Histotechnology
6175 CDS: Nuclear Medical Technology
6178 CDS: Radiologic Technology
6179 CDS: Preprofessional
6053 Nutrition (Pending Board Approval)
6052 Wellness and Health Promotion



School of Nursing (3)

Bachelor of Science in Nursing (3)

7020 Nursing
7040 Nursing (Completion Sequence)
7050 Accelerated Second Degree

University Programs (1)

Bachelor of Integrative Studies (1)

7605 Integrative Studies

Bachelor of Science Offered Jointly between CAS and SECS (3)

5051 Bioengineering
5040 Engineering Chemistry
5060 Engineering Physics

Undergraduate Concentrations and Minors

CONCENTRATIONS (20)

2885 Addiction Studies
1435 2885 Addiction Studies
1435 American Studies
2850 Archaeology
1160 Endorsement Concentration in Integrated Science (STEP)
1518 Endorsement Concentration in Social Studies (STEP)
1270 Environmental Studies
6240 Exercise Science
1995 French Studies
2016 German Studies
2887 Gerontology
6073 Health Information Technology
6024 Holistic Health
1705 Linguistics
6055 Nutrition and Health
6021 Pre-Health Professional
6022 Pre-Pharmacy
6015 Pre-Physical Therapy
1152 Pre-Medical Studies – Med/Den/Opt/Vet
2856 Religious Studies
2855 Urban Studies

MINORS (108)

3100 Accounting
2740 Advertising
1605 African-American Studies
2810 Anthropology
1810 Applied Mathematics
4355 Applied Leadership Skills
1835 Applied Statistics
1055 Art History
1105 Biology
1140 Biology – Secondary Teaching
3840 Business
3801 Business Analytics

1230 Chemistry
1240 Chemistry – Secondary Teaching
2889 Child Welfare
1610 Chinese Studies
1956 Chinese Language
1955 Chinese Language and Civilization
2841 Christianity Studies
1450 Cinema Studies
2705 Communication
6056 Community Health Engagement
5020 Computer Science
5021 Computing
2875 Criminal Justice
1420 Creative Writing
2290 Dance
2750 Digital Media Production
3700 Economics
3702 Economics – Secondary Teaching
4351 Employment Systems and Standards
1405 English
1430 English – Secondary Teaching
3850 Entrepreneurship
6042 Environmental Health and Safety
1266 Environmental Science
6240 Exercise Science
3200 Finance
1981 French Language
1980 French Language and Literature
2011 German Language
2010 German Language and Literature
2016 German Studies
1095 Graphic Design
1505 History
1515 History – Secondary Teaching
6025 Holistic Health
4320 Human Resource Development

3400 Human Resources Management
3521 Information Security Management
2708 Interactive and Social Media
3302 International Management
5300 International Orientation
2510 International Relations
5070 Information Technology
2842 Islamic Studies
2030 Italian Language
2037 Japanese Language
2035 Japanese Language and Civilization
2040 Japanese Language and Literature
2047 Japanese – Secondary Teaching
1615 Japanese Studies
2350 Jazz Studies
2735 Journalism
2843 Judaic Studies
1625 Latin American Studies
4360 Lean Leadership
2864 LGBTQ Studies
1705 Linguistics
3500 Management Information Systems
3600 Marketing
1805 Mathematics
1825 Mathematics – Secondary Teaching
1635 Middle Eastern Studies
2205 Music
2206 Music, Liberal Arts
2351 Music Theory

6055 Nutrition and Health
3806 Operations Management
2709 Organizational Communication
2375 Philosophy
2405 Physics
2430 Physics – Secondary Teaching
2515 Political Science
2520 Political Science – Secondary Teaching
2605 Psychology
2742 Public Relations
2530 Public Administration and Public Policy
2707 Relational Communication
1631 Russian and East European Studies
2820 Sociology
1620 South Asian Studies
2101 Spanish Language
2100 Spanish Language and Literature
1070 Studio Art
1720 Teaching English as a Second Language
2294 Theatre
1147 Three Science
4900 Training and Development
1146 Two Science
1144 Urban Agriculture and Agroecology
6051 Wellness and Health Promotion
2865 Women and Gender Studies
2870 Writing and Rhetoric
2355 World Music



Graduate Degree Programs (133)

Doctoral (22)

Biological and Biomedical Sciences
Biomedical Sciences: Health & Env. Chemistry
Applied Mathematical Sciences
Music Education
Applied & Computational Physics
Biomedical Sciences: Medical Physics
Psychology
Leadership
Organizational Leadership
Literacy, Culture & Language
Education - Counseling
Education - Educational Leadership
Education - Early Childhood
Computer Science and Informatics
Mechanical Engineering
Systems Engineering
Electrical and Computer Engineering
Physical Therapy, D.P.T.
Physical Therapy, D.Sc.P.T.
Nursing Practice
Nursing Practice Nurse Anesthesia
Nursing

Master's (56)

Biology
English
History
Liberal Studies
Linguistics
Mathematics
Communication
Music Education
Vocal Pedagogy

Vocal Performance
Piano Pedagogy
Piano Performance
Conducting
Instrumental Performance
World Percussion Performance
Public Administration
Biology
Chemistry
Applied Statistics
Industrial Applied Mathematics
Physics
Psychology
Accounting
Business Administration
Executive Master of Business Administration
Information Technology Management
Counseling
Clinical Mental Health Counseling
Training and Development
Educational Leadership
Teacher Leadership
Higher Education Leadership
Early Childhood Education
Special Education, w/ABA
Special Education, w/ASO
Special Education. w/EI
Special Education, w/SLD
Elementary Education
Secondary Education
Reading and Language Arts
Computer Science
Mechanical Engineering
Systems Engineering

Industrial and Systems Engineering
Electrical and Computer Engineering
Mechatronic Systems Engineering
Engineering Management
Software Engineering and Information Technology
Embedded Systems
Public Health
Safety Management
Exercise Science
Adult Gerontological Primary Care Nurse Practitioner
Family Nurse Practitioner Primary Care
Forensic Nursing
Cyber Security

Graduate Certificate (42)

Biomedical Sciences
Teaching English as a Second Language
K12 - Teaching English as a Second Language
Statistical Methods
Vocal Pedagogy
Vocal Performance
Piano Pedagogy
Piano Performance
Conducting
Instrumental Performance
Court Administration
Health Care Administration
Nonprofit Organization & Management
Local Government Management
Criminal Justice Leadership
Finance
Information Security Management
Business Analytics
Lean Leadership
Digital Literacies & Learning
Applied Behavior Analysis Comprehensive
Applied Behavior Analysis Basic

Autism for Multiple Disciplines
Autism Spectrum Disorder Education Advanced
Autism Spectrum Disorder Education Basic
Emotional Impairment Advanced
Emotional Impairment Basic
Specific Learning Disability Basic
Specific Learning Disability Advanced
Human Diversity, Inclusion & Social Justice
Productivity Improvement
Oncology Rehabilitation
Orthopedic Manual Physical Therapy
Pediatric Rehabilitation
Orthopedics
Neurological Rehabilitation
Teaching and Learning for Rehabilitation Professionals
Exercise Science
Clinical Exercise Science
Corporate & Worksite Wellness
Forensic Nursing
Business Essentials

Post Masters Graduate Certificate (13)

Accounting
General Management
International Business
Human Resources Management
Management Information Systems
Marketing
Business Economics
Production/Operations Management
Entrepreneurship
Reading, Language Arts & Literature
Central Office Administration
Higher Education
Nurse Anesthesia

Staffing and Enrollment

FIGURE 1

Faculty and Staff Full Time Equivalent (FTE) by Program, FY 2017-18

Instructional Programs			Non-Instructional Programs	
	FACULTY	STAFF		STAFF
Area, Ethnic,Cultural, Gender and Group Studies	10.87	0.85	Research	24.44
Communications, Journalism, and Related Programs	41.61		Public Support	3.77
Computer & Information Sciences & Support Services	24.61	5.94	Academic Support	442.91
Education	83.56	23.80	Student Services	267.67
Engineering	54.27	22.83	Institutional Support	227.43
Foreign Languages, Literatures, & Linguistics	55.79	2.85	Plant Operation& Maintenance	129.15
Eng Language & Lit/Letters	84.67	7.43	Aux Enterprise	55.16
Lib Arts & Sci, Gen Studies & Human	7.16	3.93		
Library Science	1			
Biological & Biomedical Sciences	46.71	13.95		
Mathematics & Statistics	39.05	7.57		
Multi/Interdisciplinary Studies				
Parks, Rec, Leisure, & Fitness Stud	8.71			
Philosophy & Religious Studies	25.92	0.92		
Physical Sciences	32.98	16.08		
Psychology	32.83	3.59		
Homeland Security, Law Enforcement, Firefighters	8.46			
Public Administration & Social Service Professions	13.59			
Social Sciences	50.36	9.88		
Visual & Performing Arts	87.47	23.89		
Health Professions and Related Sciences	10.16			
Medicine (MD)	43.53	18.04		
Public Health	10.18			
Reg Nursing, Nursing Admin, Nursing Res & Clinc	47.34	0.68		
Health Prof & Related Clinical Sciences, Other	32.08	7.61		
Business, Mgt, Market & Related Support Svcs	93.7	10.33		
History	15.83	2.22		
Total Instruction	962.44	182.39	Total FTE	1332.92

Staffing and Enrollment

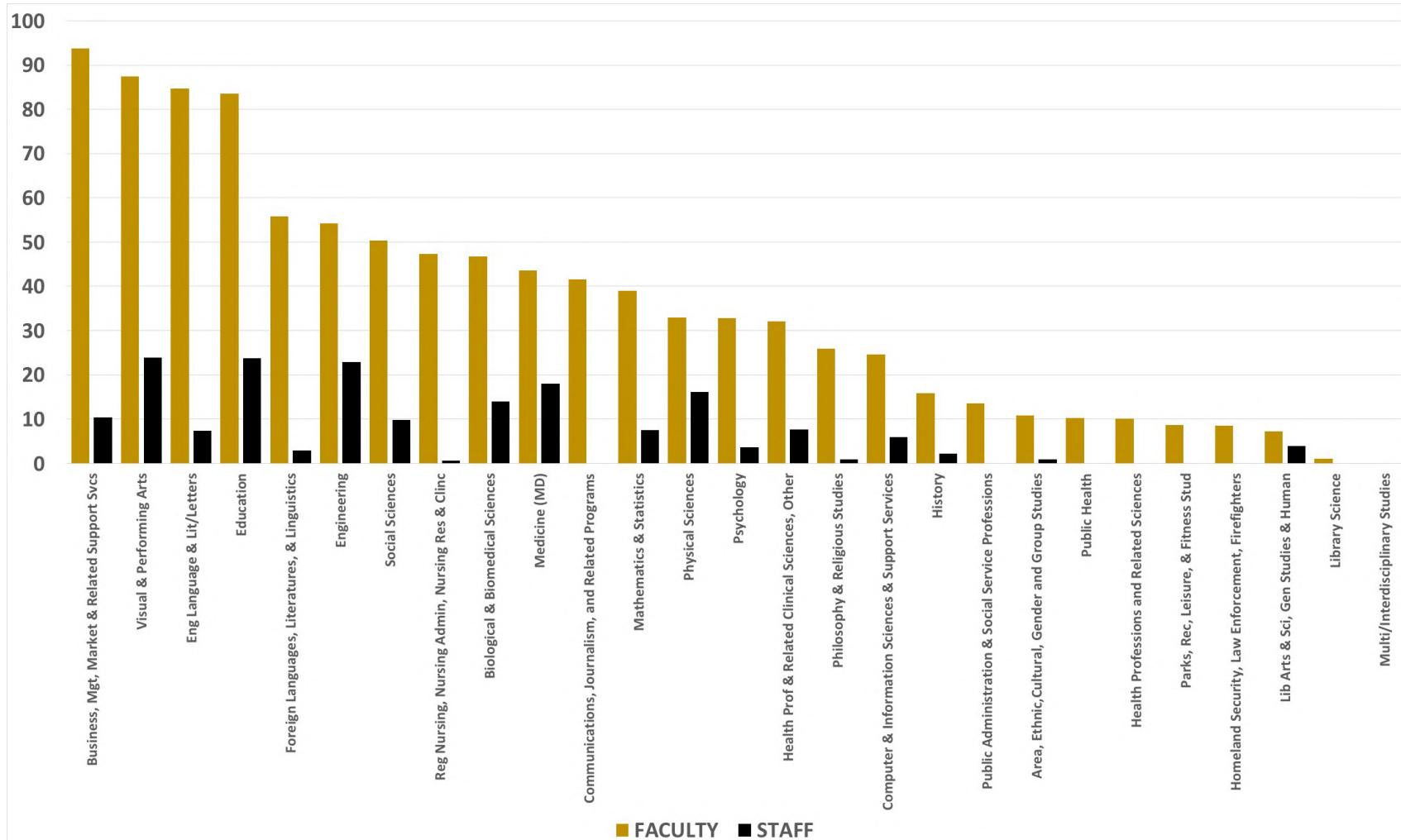


FIGURE 2

Student Credit Hours by Level and by Program, FY 2016-17

This chart shows credit hours awarded by instructional discipline.

Area	Lower	Upper	Masters	Doctoral	Total
Area Studies	4147	778			4925
Communication	10004	7282	306		17592
Computer Science	7238	6782	1945	493	16458
Education	1088	10868	11467	3110	26533
Engineering	10693	15009	6825	823	33350
Modern Languages	17044	3170	194		20408
English	28922	8448	206		37576
Liberal Arts	5012	201	110		5323
Library Science					0
Biology	21146	14202	1521	82	36951
Math	29552	947	1101	73	31673
Multi/Interdisciplin. Sciences					0
Parks, Recreation & Fitness					0
Philosophy	12276	1144			13420
Physical Sciences	29297	2629	447	101	32474
Psychology	12392	6278	769	64	19503
Criminal Justice	1888	3256			5144
Public Administration	352	3942	1186		5480
Social Science	17302	9294	357		26953
Fine Arts	21370	8721	201	53	30345
Medical Laboratory Sciences	760	4729	44		5533
Public Health	487	929	875		2291
Rehabilitative & Therapeutic Professions		250	1116	3739	5105
Nursing	7307	16725	3485	955	28472
Other Health Professions	5525	9353			14878
Business	11547	41077	7030		59654
History	4236	2207	90		6533
Total	259,585	178,221	39,275	9,493	486,574

Student Credit Hours by Level and Program

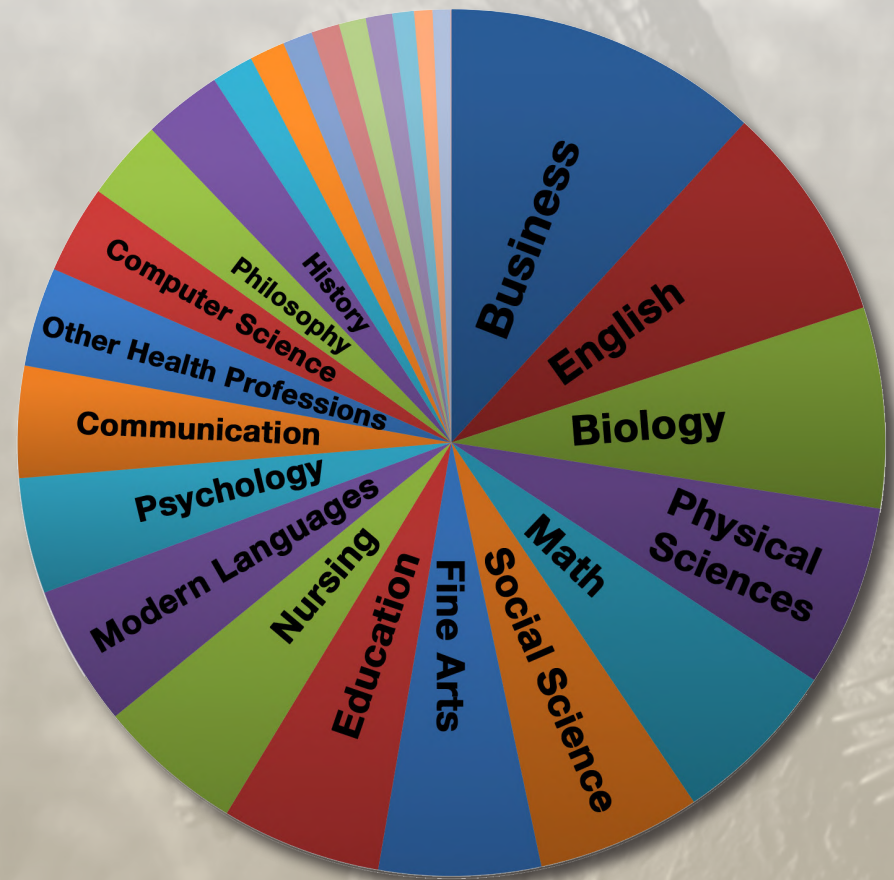
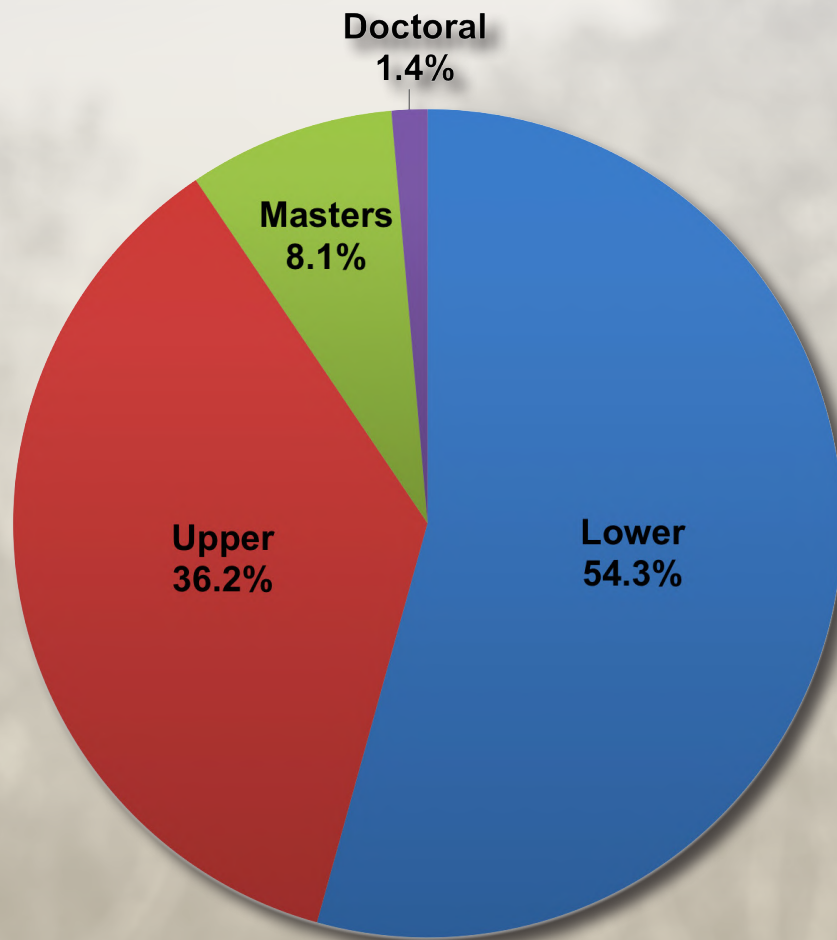


FIGURE 3

Degrees Awarded by Program, FY 2018-19

	Bachelor's	Post Bachelor's	Master's	Post Master's	Doctoral	Total
Business, Management, Marketing, and Related Support Services	622		127	8		757
Health Professions and Related Clinical Sciences, Other.	391	11	36		171	609
Public Health	401		78	2	7	488
Engineering	314	1	138		19	472
Education	148	4	206	56	23	437
Biological and Biomedical Sciences	186	6	23		3	218
Computer and Information Sciences and Support Services	140		58		12	210
Psychology	181		15		2	198
Communication, Journalism, and Related Programs	184		11			195
Liberal Arts and Sciences, General Studies and Humanities	160		1			161
Visual and Performing Arts	132		1			133
Public Administration and Social Service Professions	97		24			121
English Language and Literature/Letters	93		4			97
Social Sciences	94	1				95
Security and Protective Services	82					82
History	47		2			49
Foreign Languages, Literatures, and Linguistics	39		7			46
Engineering Technologies/Technicians			44			44
Nursing	27		17			44
Natural Resources and Conservation	34					34
Physical Sciences	20		12		1	33
Mathematics and Statistics	12		11		2	25
Philosophy and Religious Studies	9					9
Legal Professions and Studies	7					7
Area, Ethnic, Cultural, and Gender Studies	4					4
Parks, Recreation, Leisure, and Fitness Studies						0
Total	3,424	23	815	66	240	4,568

Degrees Awarded by Program



FIGURE 4

Enrollment Trends from Fall 1999 to Fall 2019

Student enrollment over the last 20 years at Oakland University's grew from 14,287 to 19,013, which represents an increase of more than 33%.

Fall Term	Undergraduate			Graduate			Total		
	In-State	Out-State	Total	In-State	Out-State	Total	In-State	Out-State	Total
1999	11,153	179	11,332	2,878	77	2,955	14,031	256	14,287
2000	11,530	200	11,730	3,061	99	3,160	14,591	299	14,890
2001	12,034	215	12,249	3,145	104	3,249	15,179	319	15,498
2002	12,185	208	12,393	3,232	115	3,347	15,417	323	15,740
2003	12,504	223	12,727	3,428	101	3,529	15,932	324	16,256
2004	12,614	211	12,825	3,568	113	3,681	16,182	324	16,506
2005	12,923	212	13,135	3,672	100	3,772	16,595	312	16,907
2006	13,163	210	13,373	3,839	97	3,936	17,002	307	17,309
2007	13,549	182	13,731	3,753	107	3,860	17,302	289	17,591
2008	13,948	158	14,106	3,528	124	3,652	17,476	282	17,758
2009	14,680	181	14,861	3,401	117	3,518	18,081	298	18,379
2010	14,961	189	15,150	3,293	121	3,414	18,254	310	18,564
2011	15,275	198	15,473	3,301	126	3,427	18,576	324	18,900
2012	15,587	229	15,816	3,293	157	3,450	18,880	386	19,266
2013	15,967	305	16,272	3,236	252	3,488	19,203	557	19,760
2014	16,166	343	16,509	3,149	346	3,495	19,315	689	20,004
2015	16,379	414	16,793	3,036	432	3,468	19,415	846	20,261
2016	16,139	429	16,568	2,933	511	3,444	19,072	940	20,012
2017	15,470	431	15,901	2,895	537	3,432	18,365	968	19,333
2018	15,335	464	15,799	2,930	580	3,510	18,265	1,044	19,309
2019	15,089	454	15,543	2,937	533	3,470	18,026	987	19,013

Enrollment Trends from Fall 1998 to Fall 2018

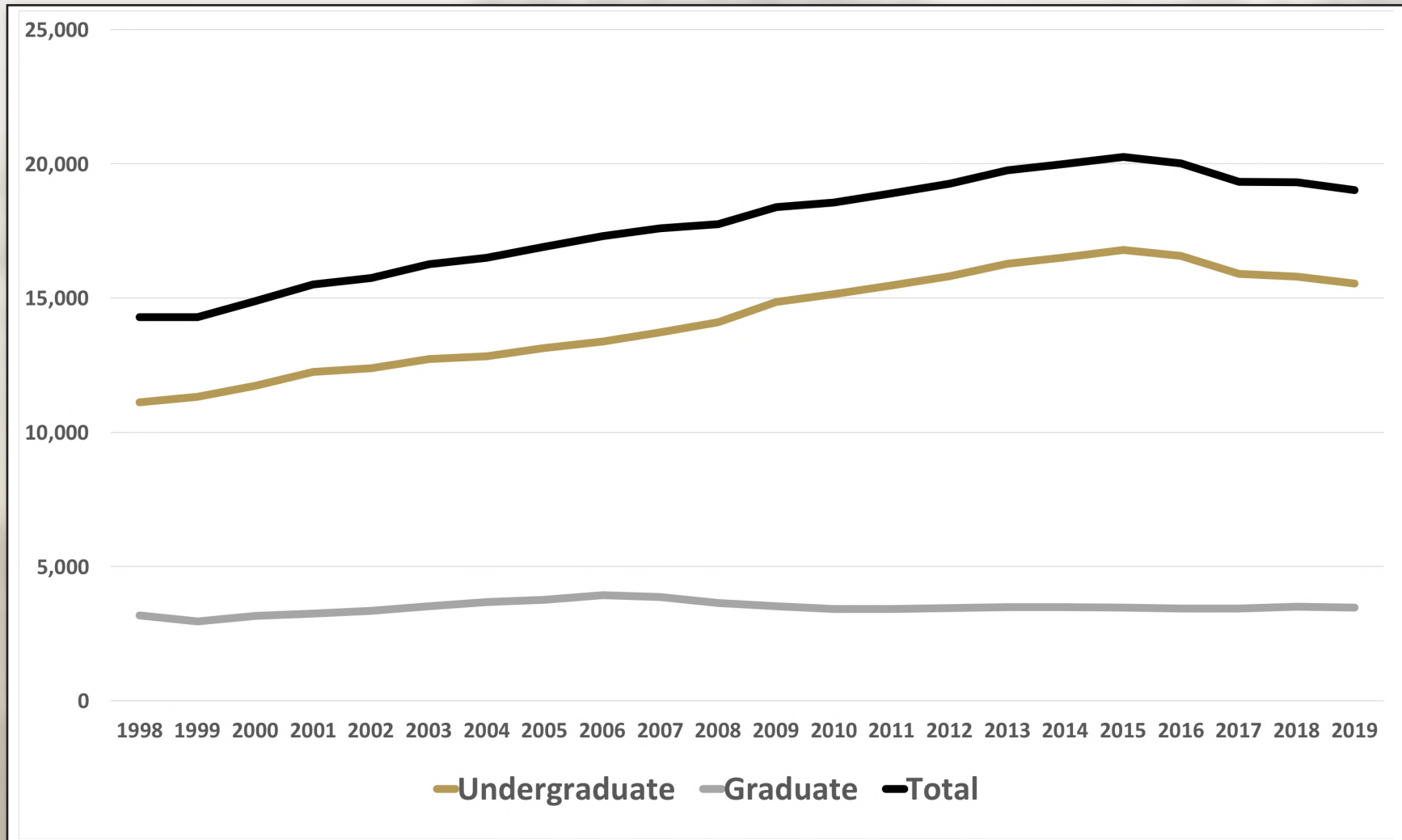


FIGURE 5

Enrollment Projections by School/College and Level, Fall 2018 – Fall 2023

	Actual			Projections			Change
Undergraduate	2018	2019	2020	2021	2022	2023	
CAS	5,341	5,122	4,957	4,915	4,940	4,956	-7.2%
SBA	2,397	2,380	2,397	2,372	2,377	2,383	-0.6%
SEHS	1,008	989	977	974	975	979	-2.9%
SECS	2,779	2,825	2,846	2,857	2,878	2,890	4.0%
SHS	1,874	1,882	1,877	1,870	1,866	1,870	-0.2%
SON	1,328	1,307	1,291	1,289	1,286	1,289	-2.9%
UP/None	1,072	965	933	910	902	909	-15.2%
Total	15,799	15,471	15,277	15,187	15,224	15,276	-3.3%
Graduate	2018	2019	2020	2021	2022	2023	
CAS	369	364	371	373	368	369	0.1%
SBA	422	430	434	436	435	427	1.2%
SEHS	914	907	903	901	896	901	-1.4%
SECS	815	855	866	875	881	875	7.4%
SHS	261	261	267	270	267	264	1.0%
SON	235	241	248	252	250	242	3.1%
Medical School	494	495	496	496	496	496	0%
Total	3,510	3,554	3,585	3,603	3,593	3,574	1.8%
W/O SOM	3,016	3,059	3,089	3,107	3,097	3,078	2.1%
Total	2018	2019	2020	2021	2022	2023	
CAS	5,710	5,486	5,328	5,288	5,308	5,326	-6.7%
SBA	2,819	2,810	2,831	2,807	2,812	2,810	-0.3%
SEHS	1,922	1,896	1,880	1,875	1,871	1,880	-2.2%
SECS	3,594	3,680	3,712	3,732	3,759	3,765	4.8%
SHS	2,135	2,144	2,144	2,140	2,133	2,133	-0.1%
SON	1,563	1,548	1,539	1,541	1,536	1,531	-2.0%
Medical School	494	495	496	496	496	496	0%
University Programs	1,072	965	933	910	902	909	-15.2%
Total	19,309	19,025	18,862	18,790	18,817	18,850	-2.4%
Change		-1.5%	-0.9%	-0.4%	0.1%	0.2%	

University Enrollment Projections by School/College, Fall 2018 – Fall 2023

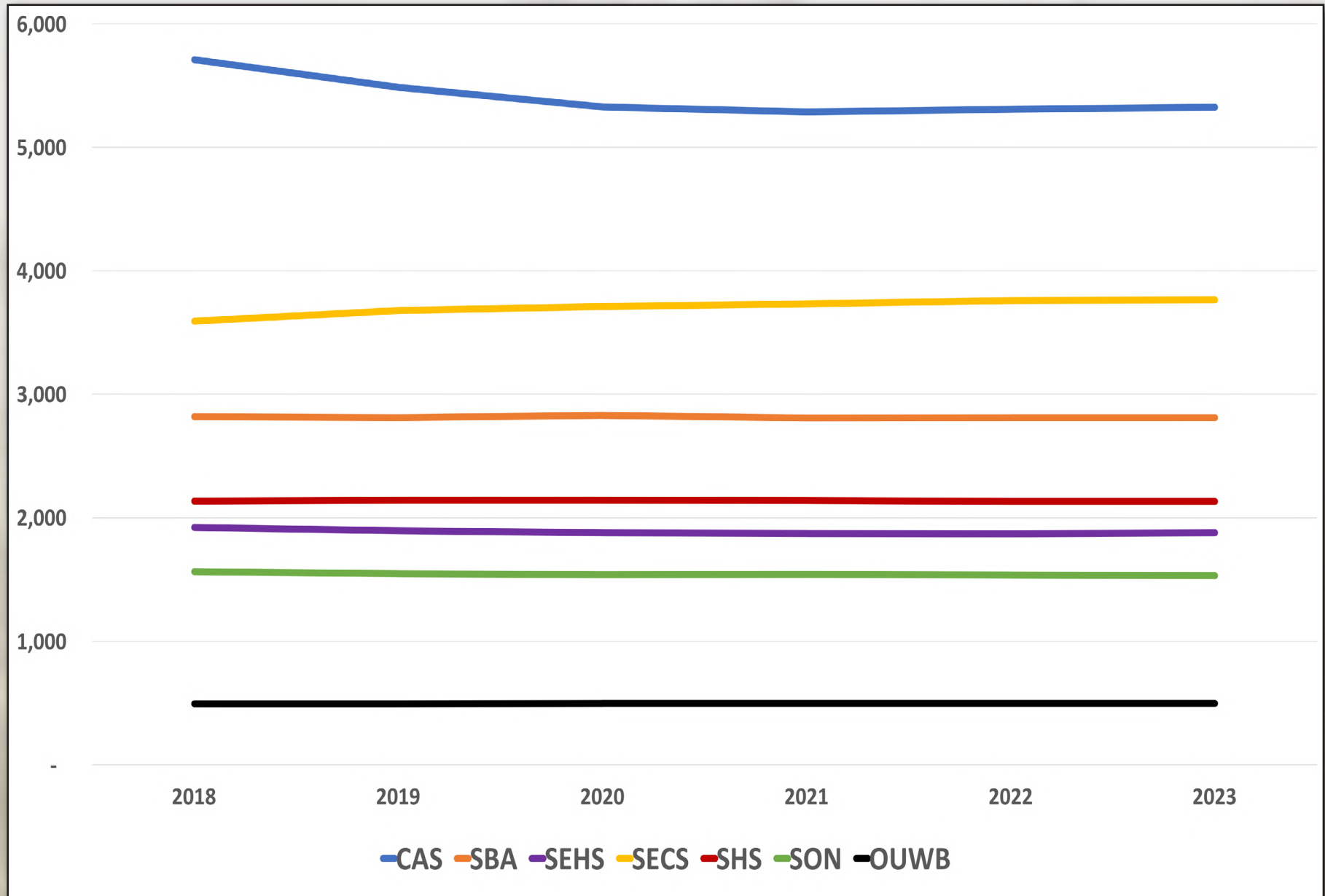
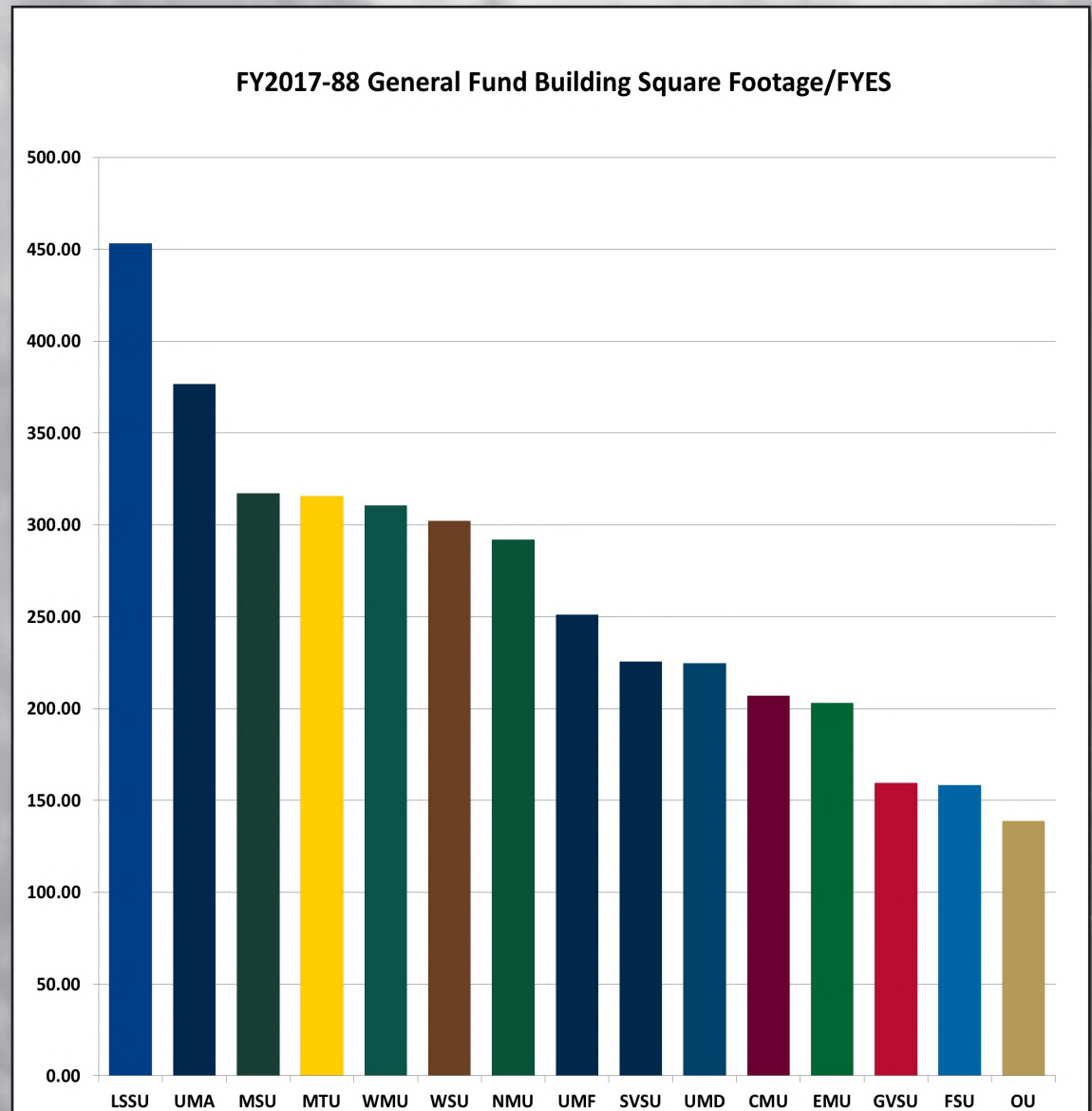


FIGURE 6

General Fund Square Feet per Student in Michigan, FY 2017-18

University	Total Square Footage	Square Footage/FYES
LSSU	827,718	453.30
UMA	17,651,351	376.73
MSU	14,598,817	317.27
MTU	2,091,553	315.53
WMU	5,846,710	310.57
WSU	7,019,683	302.12
NMU	1,960,423	292.03
UMF	1,547,957	251.08
SVSU	1,677,736	225.56
UMD	1,582,839	224.65
CMU	4,043,410	206.87
EMU	3,270,134	202.95
GVSU	3,586,631	159.48
FSU	1,781,865	158.37
OU	2,416,789	138.80



Future Staffing Needs

Currently, Oakland University employs 2,443 full- and part-time faculty and staff, as well as 1,865 students and graduate assistants. In addition, there are more than 100 employees of contract service providers for food service, bookstore and custodial services.

Average Class Size

Average class size for undergraduate instruction in fall 2018 was 30.48 students. Graduate class size in fall 2015 was 17.15 and Ph.D. classes averaged 21.6 students. It is important to the institutional character that the size of classes remains small. However, larger classes have been a cost-effective way to absorb growth.



Facility Assessment

Utilization Rates



Oakland University has the lowest building square footage per student (Figure 6) among the 15 public universities. A comparison of its enrollment, programmatic mix, doctoral programs and relatively large number of engineering and science programs suggests that the University's space should be closer to the state average. Program by program comparisons to national norms for disciplines indicates that all programs fall short in space. Classroom utilization is high, especially in the evenings due to Oakland's enrollment, which includes a large number of non-traditional students. Demand for evening classes exceeds available facilities.

Mandated Standards

Mandated standards for animal research are met.

Functionality

The limited amount of specialized program space affects overall space functionality. This is particularly evident in the most impacted areas of Nursing, Health Sciences, and the Performing Arts. Recent facility additions for the sciences, nursing, business and education provide good space for programmatic needs. Most academic programs on the Oakland University campus are offered in the following buildings:

North Foundation Hall – Completed in 1959, this is primarily a student services building, but also includes one classroom. The building is receiving a general facelift and significant improvements to the air distribution system.

South Foundation Hall - Completed in 1959, this is primarily a classroom building. As one of the oldest buildings on campus, it hosts the core classrooms for incoming students. Since the building was constructed, emphasis has been placed upon the institution's function rather than form, making academics and growth the main focus of the building, which has remained predominantly classroom-based. To continue to enhance the University's student success initiative, renovation of South Foundation Hall is OU's top priority and the proposed 2019 renovations will not only incorporate new state-of-the-art classrooms, but a collaborative environment that integrates an innovative learning space. This will gradually build a sense of timelessness that links generations of the campus community and is associated with the campus' quality and highly valued physical environment.



Hannah Hall - Completed in 1961, houses science, health science, and engineering laboratories as well as classrooms and offices. Air conditioning was added as part of a major energy project undertaken several years ago. Portions of the building were renovated to accommodate health sciences as part of the State funded Science and Engineering Building.

Kresge Library – Completed in 1961 with additions in 1989. This is the central library for the institution.

Wilson Hall - Completed in 1967, houses the departments of Art and Art History, and Communications and Journalism. It also houses Meadow Brook Theatre and administrative offices.



Dodge Hall - Completed in 1969, houses engineering and biology laboratories, offices, and classrooms. It also provides space for the Eye Research Institute and the administrative/academic computing center.

Varner Hall - Completed in 1970, houses the departments of Music, Theatre and Dance (MTD), History, Political Science, and Sociology/Anthropology. The facilities for MTD are inadequate to meet the needs of their growing programs.

O'Dowd Hall - Completed in 1982, this building houses the Graduate Office, the Registrar, the Departments of English, Writing and Rhetoric, Modern Languages and Literatures, Linguistics, Philosophy, and a number of general purpose classrooms. It is also home to the Oakland University William Beaumont School of Medicine.

Elliott Hall - Completed in 2000, houses the School of Business Administration and Information Technology.

Pawley Hall - Completed in 2002, houses the School of Education and Human Services, as well as the Lowry Child Development Center.

Human Health Building – Completed in Fall, 2012, this 172,825 square foot building houses the School of Health Sciences and the School of Nursing. Collectively, this new enterprise is part of Oakland University's vision of better preparing today's health care students by creating an innovative partnership in one structure. With this building, growth in undergraduate and graduate enrollment is responsive to vital shortages in nursing and heavy demand for health science professionals.



Engineering Center (EC) - Completed in Fall, 2014, this building is designed to provide high quality twenty first century instructional and research facilities for all engineering and computer science programs that are vital to the revival of the economy of Southeast Michigan as well as the State of Michigan in general. This includes supporting the global competitiveness of the US alternative energy, health care and biomedical, automotive, defense, and other high-tech industries. The EC added 128,000 square feet for the School of Engineering and Computer Science (SECS), as well as 13,500 square feet of assignable general purpose classroom space to support the growth of the overall student population.

Although academic programs are offered in other facilities and there are a number of other service buildings and auxiliary buildings, the above are the major academic facilities. The average age of buildings on the main campus is 30 years old. In general, buildings are in fair condition. Oakland University maintains a comprehensive list of plant renewal and deferred plant renewal projects, which is updated annually.

Replacement Value of Facilities

The replacement value of Oakland University's 4.2 million square feet, including Meadow Brook Hall is estimated at \$1,26 billion.

Utility Systems Condition

The utility systems in facilities (i.e., heating, ventilation, air conditioning (HVAC), water, sewage, gas and electrical) are in varying degrees of condition, depending on facility age. All are fully functional, with those in the 30- to 40-year age and beyond group needing upgrades to increase efficiency and effectiveness of operation. The storm water system for some of the facilities surpassed capacity due to unusual 100-year storms and need attention in coming years. The existing water/sewage infrastructure is adequate to serve the projected programming needs for the next 10 years. An upgrade to the electrical substation was completed in 2003, which included cabling, switchgear, and a new substation. This upgrade will meet projected electrical needs for at least 15 years however capacity of the cabling needs to be evaluated as the campus grows in the future. Additional upgrades to infrastructure throughout campus will be required as campus facilities age and enrollment grows.

Many of the older facilities lack fire suppression systems and would be in consideration to update the facilities per current Codes during major renovation projects.

Due to the age of OU's infrastructure, replacement/upgrade is needed for the underground HTHW lines and HTHW in tunnel. A new HTHW line needs to be installed to complete the south loop from the new Engineering Center to Varner Hall, IT cabling with Voice over IP capabilities, and the infrastructure (HVAC, plumbing and electrical) in the academic buildings (Dodge Hall of Engineering, South Foundation Hall, Hannah Hall of Science, Varner Hall).



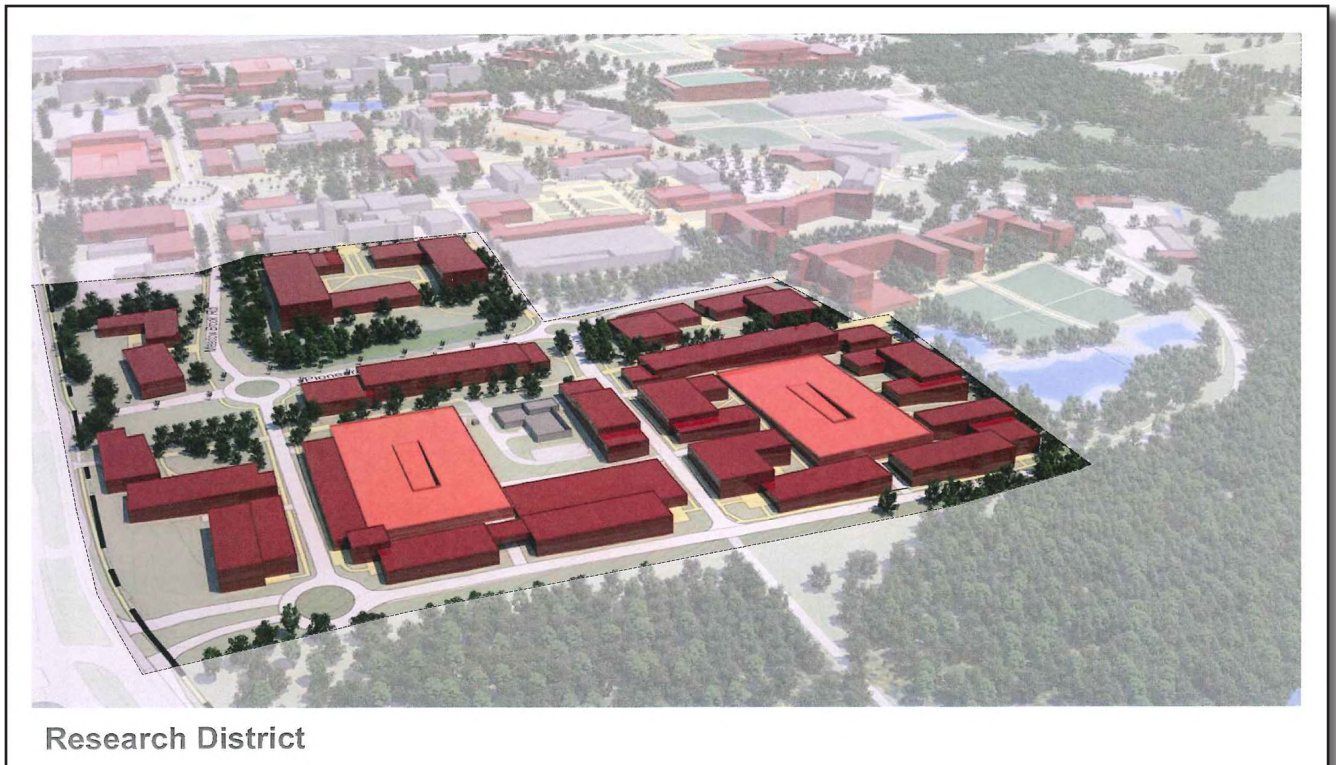
Facility Infrastructure Condition

The pavement/sidewalks/structural infrastructure is generally in fair condition. Funds are allocated annually to pavement/sidewalk repair to restore the most deteriorated portions.

Major campus projects included in the next 5-year plan the replacement of old air-handling units, HTHW system upgrade, storm water management, and an upgraded VOIP communication network. A service contract has been in place to maintain new micro-turbines in the new Engineering Center and to maintain the new cogeneration plant in CHP. Oakland budgets \$2.25 million for non-routine maintenance in its current fiscal year from the general fund, endowment distribution, and auxiliary operation reserves.

Land

Oakland University's campus includes 1,443 acres. The main campus is approximately 350 acres. The remaining campus includes several major developments (a faculty/staff subdivision, the National Register Meadow Brook Estate, two golf courses), a large amount of wetland, and significant undeveloped acreage. The Campus Master Plan, approved by the Board of Trustees in June 2016, has identified future uses for much of the undeveloped property.



Buildings Obligated to the State Building Authority

The following buildings/portions of buildings are bonded through State bonds:

Mathematics and Science Center	lease expiration in 2032
Elliott Hall	lease expiration in 2036
Pawley Hall	lease expiration in 2037
Human Health Building	lease expiration in 2048
Engineering Center	lease expiration in 2050

The following facilities are bonded through the University:

Golf course	final payment in 2026
Recreation and Athletic Center	final payment in 2026
Ann V. Nicholson Apartments	final payment in 2031
Electrical Power Upgrade	final payment in 2031
Parking Structure	final payment in 2031
Oakland Center Expansion - 2003	final payment in 2031
Human Health Building	final payment in 2039
Engineering Center	final payment in 2042
Oak View Hall	final payment in 2043
Extension of Library Drive	final payment in 2043
Facilities Management Building	final payment in 2043
Parking Structure #2	final payment in 2043
Upper Playing Fields	final payment in 2043
Oakland Center Expansion - 2018	final payment in 2047
Hillcrest Hall	final payment in 2047



Classroom Utilization Reports

Classroom Utilization Definitions

Square Feet	Assignable Square Feet
Seats	Number of Seats or Stations in Room
WRH	Number of Hours per Week Room was Scheduled
WRH%	WRH / Available Hour per Week
Station Occupancy	% of Seats Used When Room was in Use.

Classroom Summary

Number of Classrooms	123
Total Square Feet	125,759
Total Number of Seats	7,194
Average Classroom Size	1,022 square feet
Average Seats per Room	58

Classroom Utilization Summary by Time Frame

Time Frame	Available Room Hours	Fall 2017			Winter 2018		
		Average WRH	% of Available Hours	Station Occupancy %	Average WRH	% of Available Hours	Station Occupancy %
All Day – 8 a.m. to 10 p.m.	75	44.1	59%	56%	40.4	54%	56%
Daytime – 8 a.m. to 5 p.m.	45	32.9	73%	58%	29.6	66%	58%
Prime Time – 10 a.m. - 3 p.m.	25	20.8	83%	58%	19.2	77%	58%
Off Peak – 8-10 a.m.; 3-5 p.m.	20	12.0	60%	57%	10.4	52%	58%
Evening – 5-10 p.m.	25	11.19	45%	50%	10.8	43%	51%
Saturday ⁽¹⁾	9	4.6	52%	31%	5.3	59%	33%

⁽¹⁾ 12 rooms scheduled at least one week during fall term and 11 rooms scheduled for at least one week winter term. Average WRH is based on rooms scheduled only.

Report 1: All Day Utilization – Fall 2017

- All Day Utilization 8 a.m. to 10 p.m.; Monday-Friday
- 75 Available Hours per Week

Dodge Hall (DH)	North Foundation Hall (NFH)
Engineering Center (EC)	O'Dowd Hall (ODH)
Elliott Hall (EH)	Pawley Hall (PH)
Hannah Hall (HH)	South Foundation Hall (SFH)
Human Health Building (HBB)	Varner Hall (VH)
Math & Science Center (MSC)	Wilson Hall (WH)

Building	Room Number	Square Feet	Number of Seats	WRH	WRH% of Available Hours	Station Occupancy %
DH	127	1,741	92	39.2	52.3%	74.1%
DH	135	947	48	44.0	58.6%	74.3%
DH	136B	470	21	36.0	48.0%	60.8%
DH	200	1,126	95	45.4	60.6%	69.5%
DH	201	3,004	314	47.1	62.7%	50.8%
DH	202	702	52	42.9	57.2%	63.0%
DH	203	990	70	35.8	47.7%	73.6%
DH	204	374	30	47.7	63.6%	61.0%
DH	236	394	30	41.5	55.4%	52.3%
DH	237	389	24	44.0	58.7%	75.4%
EC	116	3,373	200	43.4	57.9%	59.6%
EC	254	2,035	100	41.3	55.1%	63.7%
EC	275	1,333	50	50.7	67.5%	67.0%
EC	279	1,329	50	34.9	46.5%	75.7%
EC	281	1,350	50	50.5	67.3%	65.7%
EH	204	541	30	49.1	65.5%	57.5%
EH	206	523	30	51.1	68.1%	60.6%

Building	Room Number	Square Feet	Number of Seats	WRH	WRH% of Available Hours	Station Occupancy %
EH	208	686	40	43.5	58.0%	64.2%
EH	210	683	40	46.6	62.2%	61.4%
EH	212	696	40	44.9	59.8%	73.4%
EH	214	902	48	45.1	60.2%	71.0%
EH	235	1,021	40	48.3	64.4%	66.0%
EH	237	1,026	40	56.8	75.7%	56.9%
EH	239	1,018	40	47.1	62.7%	60.9%
EH	242	1,561	60	33.2	44.2%	72.6%
HH	113	921	24	46.0	61.3%	68.2%
HH	123	777	36	53.2	71.0%	62.5%
HH	190	2,131	187	54.4	72.6%	61.3%
HH	195	2,068	187	37.0	49.4%	60.0%
HH	220	548	40	48.2	64.3%	46.7%
HH	225	422	30	39.5	52.7%	55.2%
HH	233	1,348	60	51.4	68.6%	64.6%
HHB	1005	1,828	80	40.6	54.2%	54.2%
HHB	1006	1,563	50	49.3	65.7%	61.2%
HHB	1031	729	25	39.5	52.7%	58.2%
HHB	1050	4,384	200	27.3	36.4%	53.4%
HHB	2023	1,442	50	46.7	62.3%	42.2%

Building	Room Number	Square Feet	Number of Seats	WRH	WRH% of Available Hours	Station Occupancy %
HHB	2085	1,213	55	40.3	53.7%	36.8%
HHB	2086	1,307	60	45.7	60.9%	57.3%
HHB	4043	1,938	80	36.8	49.0%	69.6%
HHB	4050	2,695	112	41.0	54.7%	50.1%
HHB	5036	1,208	50	46.6	62.1%	64.5%
HHB	5037	1,967	80	34.7	46.3%	47.0%
HHB	5045	2,730	112	42.1	56.1%	62.0%
MSC	102	1,170	48	44.6	59.5%	35.5%
MSC	104	1,117	48	46.4	61.8%	55.4%
MSC	120	1,560	72	45.5	60.7%	68.1%
MSC	124	1,839	84	45.2	60.2%	62.7%
MSC	130	624	42	45.2	60.3%	53.9%
MSC	164	1,129	70	48.1	64.1%	70.2%
MSC	168	1,129	70	49.3	65.7%	53.8%
MSC	172	1,129	70	48.3	64.4%	70.7%
MSC	185	828	50	52.0	69.4%	66.9%
MSC	187	542	36	52.0	69.3%	59.2%
MSC	364	422	26	41.0	54.7%	76.6%
MSC	372	961	50	43.5	57.9%	55.7%
MSC	376	613	28	40.0	53.3%	64.3%
MSC	378	613	30	42.2	56.2%	57.6%

Building	Room Number	Square Feet	Number of Seats	WRH	WRH% of Available Hours	Station Occupancy %
MSC	384	653	44	46.6	62.2%	50.2%
MSC	386	606	40	56.0	74.7%	68.9%
MSC	388	605	30	44.0	58.7%	48.2%
MSC	93	574	35	38.0	50.7%	42.0%
NFH	156	1,757	157	37.7	50.3%	57.2%
ODH	202A	1,344	83	42.2	56.3%	51.5%
ODH	202B	1,848	111	33.2	44.3%	81.2%
ODH	202C	1,394	83	39.1	52.1%	55.3%
PH	302	1,660	72	46.6	62.2%	37.9%
PH	306	910	48	50.2	66.9%	43.4%
PH	307	938	49	44.3	59.1%	50.2%
PH	308	910	48	42.7	56.9%	45.5%
PH	309	930	49	42.3	56.4%	55.7%
PH	310	732	36	50.6	67.5%	50.4%
PH	312	738	36	47.1	62.8%	54.8%
PH	314	916	48	50.2	66.9%	51.2%
PH	316	918	48	53.8	71.7%	44.1%
PH	318	910	48	39.4	52.5%	35.9%
PH	320	735	36	43.1	57.5%	62.5%

Building	Room Number	Square Feet	Number of Seats	WRH	WRH% of Available Hours	Station Occupancy %
SFH	163	985	65	51.1	68.1%	57.2%
SFH	164	667	30	39.0	52.1%	48.3%
SFH	165	992	63	56.0	74.7%	77.8%
SFH	166	667	30	56.0	74.7%	48.1%
SFH	167	667	48	53.1	70.8%	49.9%
SFH	168	667	30	45.8	61.0%	49.9%
SFH	169	667	40	45.5	60.7%	60.8%
SFH	170	667	48	54.2	72.3%	51.3%
SFH	171	667	30	46.8	62.3%	32.4%
SFH	172	667	48	42.6	56.9%	51.3%
SFH	173	667	48	47.1	62.8%	34.8%
SFH	174	667	48	53.7	71.6%	40.2%
SFH	176	732	48	45.4	60.5%	42.4%
SFH	263	991	65	43.5	58.1%	66.4%
SFH	265	446	25	34.2	45.6%	46.0%
SFH	266	688	48	49.7	66.3%	42.6%
SFH	268	668	48	46.2	61.6%	45.1%
SFH	269	688	48	48.9	65.2%	47.2%
SFH	270	688	48	33.6	44.9%	41.6%
SFH	271	668	48	49.7	66.3%	42.7%
SFH	272	668	48	41.6	55.4%	38.2%
SFH	273	668	48	40.6	54.1%	45.7%

Building	Room Number	Square Feet	Number of Seats	WRH	WRH% of Available Hours	Station Occupancy %
SFH	274	668	48	33.0	44.0%	49.5%
SFH	276	733	48	17.5	23.4%	47.7%
SFH	363	896	70	40.0	53.3%	78.1%
SFH	364	668	48	50.8	67.7%	23.2%
SFH	365	992	75	43.1	57.5%	45.0%
SFH	366	668	36	49.8	66.5%	28.4%
SFH	367	668	48	35.5	47.3%	37.8%
SFH	368	668	48	39.6	52.8%	57.4%
SFH	369	668	48	42.3	56.3%	44.1%
SFH	370	688	48	37.3	49.7%	56.0%
SFH	371	668	38	49.4	65.9%	33.3%
SFH	372	668	48	36.8	49.1%	54.2%
SFH	373	668	48	40.2	53.6%	58.0%
SFH	374	668	48	33.8	45.1%	43.4%
SFH	376	732	50	53.7	71.6%	41.9%
VAR	205	1,151	85	50.6	67.5%	46.9%
VAR	206	1,184	85	44.2	58.9%	37.0%
VAR	479	998	30	50.2	66.9%	67.5%
WH	102	870	60	45.2	60.3%	58.5%
WH	105	856	60	38.6	51.5%	59.8%

Building	Room Number	Square Feet	Number of Seats	WRH	WRH% of Available Hours	Station Occupancy %
WH	124	1,062	85	39.5	52.7%	58.1%
WH	301	306	16	39.5	52.7%	65.3%
WH	313	500	30	46.6	62.1%	54.6%
WH	416	372	15	16.0	21.3%	51.7%
Totals	123	125,759	7,194	5,419		
Averages		1,022	58	44.1	58.7%	55.9%



Report 2: Daytime Utilization - Fall 2017

- Daytime Utilization – 8 a.m. to 5 p.m.; Monday-Friday
- 45 Available Hours per Week

Dodge Hall (DH)	North Foundation Hall (NFH)
Engineering Center (EC)	O'Dowd Hall (ODH)
Elliott Hall (EH)	Pawley Hall (PH)
Hannah Hall (HH)	South Foundation Hall (SFH)
Human Health Building (HHB)	Varner Hall (VH)
Math & Science Center (MSC)	Wilson Hall (WH)

Building	Room Number	Square Feet	Number of Seats	WRH	WRH% of Available Hours	Station Occupancy %
DH	127	1,741	92	25.1	55.8%	83.1%
DH	135	947	48	35.2	78.1%	81.7%
DH	136B	470	21	32.0	71.1%	64.3%
DH	200	1,126	95	36.9	81.9%	74.7%
DH	201	3,004	314	40.8	90.7%	54.5%
DH	202	702	52	34.7	77.0%	65.3%
DH	203	990	70	27.7	61.6%	74.6%
DH	204	374	30	33.0	73.3%	74.1%
DH	236	394	30	33.5	74.6%	54.8%
DH	237	389	24	36.0	80.0%	83.8%
EC	116	3,373	200	37.4	83.2%	61.2%
EC	254	2,035	100	32.3	71.7%	65.8%
EC	275	1,333	50	32.7	72.6%	69.5%
EC	279	1,329	50	22.9	50.9%	78.0%
EC	281	1,350	50	36.2	80.5%	59.6%
EH	204	541	30	41.0	91.1%	62.4%
EH	206	523	30	38.0	84.4%	68.6%

Building	Room Number	Square Feet	Number of Seats	WRH	WRH% of Available Hours	Station Occupancy %
EH	208	686	40	32.9	73.0%	61.7%
EH	210	683	40	33.9	75.4%	62.7%
EH	212	696	40	30.2	67.2%	78.9%
EH	214	902	48	30.9	68.7%	70.3%
EH	235	1,021	40	34.1	75.8%	71.7%
EH	237	1,026	40	39.3	87.4%	59.2%
EH	239	1,018	40	32.9	73.0%	56.1%
EH	242	1,561	60	25.2	56.0%	79.8%
HH	113	921	24	38.4	85.4%	74.6%
HH	123	777	36	40.7	90.4%	69.0%
HH	190	2,131	187	45.6	101.3%	64.6%
HH	195	2,068	187	34.9	77.6%	59.1%
HH	220	548	40	33.0	73.3%	50.0%
HH	225	422	30	31.0	68.9%	63.0%
HH	233	1,348	60	35.4	78.7%	70.1%
HHB	1005	1,828	80	27.0	60.0%	62.3%
HHB	1006	1,563	50	34.9	77.6%	58.7%
HHB	1031	729	25	31.0	68.9%	60.3%
HHB	1050	4,384	200	27.3	60.7%	53.4%
HHB	2023	1,442	50	34.9	77.5%	42.3%

Building	Room Number	Square Feet	Number of Seats	WRH	WRH% of Available Hours	Station Occupancy %
HHB	2085	1,213	55	31.1	69.2%	40.2%
HHB	2086	1,307	60	32.0	71.1%	51.7%
HHB	4043	1,938	80	28.5	63.3%	71.6%
HHB	4050	2,695	112	32.0	71.2%	44.0%
HHB	5036	1,208	50	36.9	82.1%	70.2%
HHB	5037	1,967	80	28.1	62.6%	49.8%
HHB	5045	2,730	112	33.0	73.3%	71.0%
MSC	102	1,170	48	33.0	73.3%	42.9%
MSC	104	1,117	48	32.0	71.1%	61.7%
MSC	120	1,560	72	28.9	64.3%	69.3%
MSC	124	1,839	84	33.1	73.6%	69.6%
MSC	130	624	42	31.0	68.9%	54.2%
MSC	164	1,129	70	35.0	77.8%	73.1%
MSC	168	1,129	70	38.2	84.8%	54.3%
MSC	172	1,129	70	36.3	80.6%	80.2%
MSC	185	828	50	40.0	88.9%	71.2%
MSC	187	542	36	35.0	77.8%	59.8%
MSC	364	422	26	41.0	91.2%	76.6%
MSC	372	961	50	34.4	76.4%	54.7%
MSC	376	613	28	36.0	80.0%	68.3%
MSC	378	613	30	30.9	68.7%	64.9%

Building	Room Number	Square Feet	Number of Seats	WRH	WRH% of Available Hours	Station Occupancy %
MSC	384	653	44	36.0	80.0%	49.7%
MSC	386	606	40	40.0	88.9%	78.5%
MSC	388	605	30	31.0	68.9%	60.9%
MSC	93	574	35	24.0	53.3%	47.9%
NFH	156	1,757	157	32.3	71.8%	55.1%
ODH	202A	1,344	83	31.5	70.1%	50.1%
ODH	202B	1,848	111	28.6	63.6%	86.5%
ODH	202C	1,394	83	31.0	68.9%	51.0%
PH	302	1,660	72	36.0	80.0%	37.5%
PH	306	910	48	35.0	77.8%	47.8%
PH	307	938	49	30.1	67.0%	59.0%
PH	308	910	48	32.0	71.1%	43.8%
PH	309	930	49	28.1	62.4%	63.9%
PH	310	732	36	39.0	86.7%	54.7%
PH	312	738	36	36.0	80.0%	59.0%
PH	314	916	48	35.0	77.8%	50.7%
PH	316	918	48	38.5	85.7%	36.4%
PH	318	910	48	28.5	63.4%	38.6%
PH	320	735	36	32.0	71.1%	64.9%

Building	Room Number	Square Feet	Number of Seats	WRH	WRH% of Available Hours	Station Occupancy %
SFH	163	985	65	35.0	77.8%	53.5%
SFH	164	667	30	35.0	77.8%	48.4%
SFH	165	992	63	38.0	84.4%	69.6%
SFH	166	667	30	39.0	86.7%	44.1%
SFH	167	667	48	38.9	86.5%	53.0%
SFH	168	667	30	30.7	68.2%	51.3%
SFH	169	667	40	35.0	77.8%	67.2%
SFH	170	667	48	39.0	86.7%	56.0%
SFH	171	667	30	38.8	86.1%	25.3%
SFH	172	667	48	31.0	68.9%	54.8%
SFH	173	667	48	31.0	68.9%	41.2%
SFH	174	667	48	38.0	84.4%	41.7%
SFH	176	732	48	31.0	68.9%	37.6%
SFH	263	991	65	35.0	77.8%	62.1%
SFH	265	446	25	23.3	51.7%	52.0%
SFH	266	688	48	35.0	77.8%	39.9%
SFH	268	668	48	32.0	71.1%	40.1%
SFH	269	688	48	32.7	72.7%	47.7%
SFH	270	688	48	26.5	59.0%	40.2%
SFH	271	668	48	36.0	80.0%	43.3%
SFH	272	668	48	30.9	68.7%	43.0%
SFH	273	668	48	29.9	66.5%	49.9%

Building	Room Number	Square Feet	Number of Seats	WRH	WRH% of Available Hours	Station Occupancy %
SFH	274	668	48	29.9	66.5%	50.8%
SFH	276	733	48	10.9	24.3%	45.5%
SFH	363	896	70	24.0	53.3%	68.1%
SFH	364	668	48	38.8	86.1%	17.9%
SFH	365	992	75	36.0	80.0%	48.0%
SFH	366	668	36	38.8	86.1%	23.3%
SFH	367	668	48	25.8	57.4%	43.6%
SFH	368	668	48	26.9	59.8%	60.2%
SFH	369	668	48	27.5	61.2%	49.0%
SFH	370	688	48	24.6	54.7%	54.0%
SFH	371	668	38	38.8	86.1%	34.2%
SFH	372	668	48	27.1	60.3%	53.5%
SFH	373	668	48	27.0	60.0%	51.1%
SFH	374	668	48	24.2	53.7%	42.4%
SFH	376	732	50	40.0	88.9%	40.4%
VAR	205	1,151	85	39.0	86.7%	49.2%
VAR	206	1,184	85	30.0	66.7%	46.0%
VAR	479	998	30	35.0	77.8%	76.7%
WH	102	870	60	32.0	71.1%	60.6%
WH	105	856	60	27.0	60.0%	52.3%

Building	Room Number	Square Feet	Number of Seats	WRH	WRH% of Available Hours	Station Occupancy %
WH	124	1,062	85	35.0	77.8%	59.6%
WH	301	306	16	31.0	68.9%	70.6%
WH	313	500	30	35.0	77.8%	56.0%
WH	416	372	15	16.0	35.6%	51.7%
Totals	123	125,759	7,194	4,042		
Averages		1,022	58	32.9	73.0%	57.7%



Report 3: Prime Time Utilization - Fall 2017

- Prime Time Utilization 10 a.m. to 3 p.m.; Monday-Friday
- 25 Available Hours per Week

Dodge Hall (DH)	North Foundation Hall (NFH)
Engineering Center (EC)	O'Dowd Hall (ODH)
Elliott Hall (EH)	Pawley Hall (PH)
Hannah Hall (HH)	South Foundation Hall (SFH)
Human Health Building (HHB)	Varner Hall (VH)
Math & Science Center (MSC)	Wilson Hall (WH)

Building	Room Number	Square Feet	Number of Seats	WRH	WRH% of Available Hours	Station Occupancy %
DH	127	1,741	92	20.1	80.5%	82.2%
DH	135	947	48	22.1	88.6%	80.9%
DH	136B	470	21	19.0	76.0%	54.4%
DH	200	1,126	95	23.9	95.5%	82.3%
DH	201	3,004	314	22.3	89.1%	53.3%
DH	202	702	52	22.0	88.0%	67.3%
DH	203	990	70	18.9	75.7%	75.2%
DH	204	374	30	23.0	92.0%	73.6%
DH	236	394	30	22.0	88.0%	60.9%
DH	237	389	24	19.0	76.0%	87.5%
EC	116	3,373	200	21.4	85.7%	52.0%
EC	254	2,035	100	21.6	86.4%	63.5%
EC	275	1,333	50	20.6	82.6%	71.9%
EC	279	1,329	50	14.9	59.6%	68.6%
EC	281	1,350	50	22.3	89.0%	56.6%
EH	204	541	30	23.0	92.0%	53.2%
EH	206	523	30	23.0	92.0%	72.0%

Building	Room Number	Square Feet	Number of Seats	WRH	WRH% of Available Hours	Station Occupancy %
EH	208	686	40	20.9	83.7%	56.0%
EH	210	683	40	22.0	88.0%	70.7%
EH	212	696	40	18.6	74.4%	80.5%
EH	214	902	48	16.9	67.7%	76.8%
EH	235	1,021	40	21.1	84.5%	76.6%
EH	237	1,026	40	24.3	97.3%	57.4%
EH	239	1,018	40	20.9	83.7%	51.8%
EH	242	1,561	60	19.2	76.8%	90.2%
HH	113	921	24	23.0	92.0%	70.1%
HH	123	777	36	22.0	88.0%	74.0%
HH	190	2,131	187	24.9	99.7%	65.8%
HH	195	2,068	187	21.9	87.6%	62.6%
HH	220	548	40	23.0	92.0%	51.9%
HH	225	422	30	23.0	92.0%	59.7%
HH	233	1,348	60	22.4	89.7%	77.6%
HHB	1005	1,828	80	14.0	56.0%	57.0%
HHB	1006	1,563	50	20.9	83.7%	57.6%
HHB	1031	729	25	22.0	88.0%	61.1%
HHB	1050	4,384	200	15.1	60.4%	56.5%
HHB	2023	1,442	50	21.7	86.7%	37.5%

Building	Room Number	Square Feet	Number of Seats	WRH	WRH% of Available Hours	Station Occupancy %
HHB	2085	1,213	55	21.8	87.3%	43.9%
HHB	2086	1,307	60	23.0	92.0%	55.4%
HHB	4043	1,938	80	22.0	88.0%	81.9%
HHB	4050	2,695	112	19.0	76.2%	35.5%
HHB	5036	1,208	50	20.4	81.5%	72.0%
HHB	5037	1,967	80	19.1	76.6%	54.8%
HHB	5045	2,730	112	20.2	81.0%	68.9%
MSC	102	1,170	48	20.0	80.0%	41.3%
MSC	104	1,117	48	22.3	89.3%	63.7%
MSC	120	1,560	72	20.9	83.7%	68.1%
MSC	124	1,839	84	24.1	96.4%	72.4%
MSC	130	624	42	22.0	88.0%	58.4%
MSC	164	1,129	70	22.0	88.0%	69.1%
MSC	168	1,129	70	22.0	88.0%	62.3%
MSC	172	1,129	70	24.1	96.4%	83.2%
MSC	185	828	50	23.0	92.0%	78.2%
MSC	187	542	36	22.0	88.0%	55.3%
MSC	364	422	26	24.0	96.2%	68.1%
MSC	372	961	50	17.4	69.6%	51.7%
MSC	376	613	28	23.0	92.0%	67.5%
MSC	378	613	30	19.0	76.0%	71.8%

Building	Room Number	Square Feet	Number of Seats	WRH	WRH% of Available Hours	Station Occupancy %
MSC	384	653	44	19.0	76.0%	56.1%
MSC	386	606	40	23.0	92.0%	78.8%
MSC	388	605	30	23.0	92.0%	60.7%
MSC	93	574	35	19.3	77.3%	52.1%
NFH	156	1,757	157	16.2	64.9%	47.8%
ODH	202A	1,344	83	20.3	81.3%	52.5%
ODH	202B	1,848	111	17.2	68.8%	85.3%
ODH	202C	1,394	83	22.0	88.0%	47.1%
PH	302	1,660	72	23.0	92.0%	33.9%
PH	306	910	48	22.0	88.0%	48.1%
PH	307	938	49	16.1	64.6%	56.3%
PH	308	910	48	23.0	92.0%	42.5%
PH	309	930	49	15.8	63.3%	63.8%
PH	310	732	36	22.0	88.0%	55.6%
PH	312	738	36	23.0	92.0%	56.9%
PH	314	916	48	22.0	88.0%	43.8%
PH	316	918	48	19.7	78.7%	34.0%
PH	318	910	48	15.6	62.2%	54.1%
PH	320	735	36	19.0	76.0%	76.6%

Building	Room Number	Square Feet	Number of Seats	WRH	WRH% of Available Hours	Station Occupancy %
SFH	163	985	65	23.0	92.0%	46.4%
SFH	164	667	30	23.0	92.0%	51.4%
SFH	165	992	63	22.0	88.0%	70.4%
SFH	166	667	30	22.0	88.0%	29.4%
SFH	167	667	48	23.0	92.0%	47.9%
SFH	168	667	30	20.7	82.7%	42.6%
SFH	169	667	40	22.0	88.0%	72.7%
SFH	170	667	48	22.0	88.0%	60.0%
SFH	171	667	30	24.5	98.0%	27.5%
SFH	172	667	48	22.0	88.0%	58.5%
SFH	173	667	48	22.0	88.0%	44.7%
SFH	174	667	48	22.0	88.0%	42.8%
SFH	176	732	48	22.0	88.0%	31.1%
SFH	263	991	65	22.0	88.0%	60.8%
SFH	265	446	25	16.8	67.0%	55.3%
SFH	266	688	48	22.0	88.0%	33.3%
SFH	268	668	48	23.0	92.0%	38.9%
SFH	269	688	48	20.7	82.9%	48.5%
SFH	270	688	48	20.7	82.7%	42.9%
SFH	271	668	48	23.0	92.0%	44.2%
SFH	272	668	48	23.0	92.0%	41.9%
SFH	273	668	48	22.0	88.0%	43.2%

Building	Room Number	Square Feet	Number of Seats	WRH	WRH% of Available Hours	Station Occupancy %
SFH	274	668	48	22.0	88.0%	49.4%
SFH	276	733	48	10.9	43.7%	45.5%
SFH	363	896	70	18.0	72.0%	71.9%
SFH	364	668	48	24.5	98.0%	21.6%
SFH	365	992	75	23.0	92.0%	52.9%
SFH	366	668	36	24.5	98.0%	20.4%
SFH	367	668	48	21.3	85.0%	43.8%
SFH	368	668	48	20.4	81.6%	56.9%
SFH	369	668	48	21.0	84.0%	54.4%
SFH	370	688	48	15.7	62.7%	51.2%
SFH	371	668	38	24.5	98.0%	31.2%
SFH	372	668	48	15.6	62.4%	43.0%
SFH	373	668	48	20.0	80.0%	45.2%
SFH	374	668	48	11.9	47.5%	47.2%
SFH	376	732	50	23.0	92.0%	43.4%
VAR	205	1,151	85	22.0	88.0%	51.9%
VAR	206	1,184	85	19.0	76.0%	53.2%
VAR	479	998	30	22.0	88.0%	74.5%
WH	102	870	60	19.0	76.0%	66.9%
WH	105	856	60	18.0	72.0%	50.4%

Building	Room Number	Square Feet	Number of Seats	WRH	WRH% of Available Hours	Station Occupancy %
WH	124	1,062	85	18.0	72.0%	67.6%
WH	301	306	16	18.0	72.0%	78.5%
WH	313	500	30	22.0	88.0%	54.2%
WH	416	372	15	16.0	64.0%	51.7%
Totals	123	125,759	7,194	2,564		
Averages		1,022	58	20.8	83.4%	57.9%



Report 4: Off Peak Utilization - Fall 2017

- Off Peak Utilization 8-10 a.m.; 3-5 p.m.; Monday-Friday
- 20 Available Hours per Week.

Dodge Hall (DH)	North Foundation Hall (NFH)
Engineering Center (EC)	O'Dowd Hall (ODH)
Elliott Hall (EH)	Pawley Hall (PH)
Hannah Hall (HH)	South Foundation Hall (SFH)
Human Health Building (HHB)	Varner Hall (VH)
Math & Science Center (MSC)	Wilson Hall (WH)

Building	Room Number	Square Feet	Number of Seats	WRH	WRH% of Available Hours	Station Occupancy %
DH	127	1,741	92	5.0	25.0%	86.7%
DH	135	947	48	13.0	65.0%	83.2%
DH	136B	470	21	13.0	65.0%	78.8%
DH	200	1,126	95	13.0	65.0%	60.7%
DH	201	3,004	314	18.5	92.6%	55.8%
DH	202	702	52	12.7	63.3%	61.9%
DH	203	990	70	8.8	44.0%	73.2%
DH	204	374	30	10.0	50.0%	75.3%
DH	236	394	30	11.5	57.7%	43.2%
DH	237	389	24	17.0	85.0%	79.7%
EC	116	3,373	200	16.0	80.0%	73.6%
EC	254	2,035	100	10.7	53.4%	70.4%
EC	275	1,333	50	12.0	60.0%	65.3%
EC	279	1,329	50	8.0	40.0%	95.5%
EC	281	1,350	50	14.0	69.9%	64.4%
EH	204	541	30	18.0	90.0%	74.1%
EH	206	523	30	15.0	75.0%	63.3%

Building	Room Number	Square Feet	Number of Seats	WRH	WRH% of Available Hours	Station Occupancy %
EH	208	686	40	11.9	59.7%	71.5%
EH	210	683	40	11.9	59.7%	48.0%
EH	212	696	40	11.6	58.2%	76.4%
EH	214	902	48	14.0	70.0%	62.5%
EH	235	1,021	40	13.0	65.0%	63.8%
EH	237	1,026	40	15.0	75.0%	62.0%
EH	239	1,018	40	11.9	59.7%	63.6%
EH	242	1,561	60	6.0	30.0%	46.7%
HH	113	921	24	15.4	77.2%	81.4%
HH	123	777	36	18.7	93.3%	63.0%
HH	190	2,131	187	20.7	103.3%	63.2%
HH	195	2,068	187	13.0	65.0%	53.1%
HH	220	548	40	10.0	50.0%	45.6%
HH	225	422	30	8.0	40.0%	72.5%
HH	233	1,348	60	13.0	65.0%	57.2%
HHB	1005	1,828	80	13.0	65.0%	68.1%
HHB	1006	1,563	50	14.0	70.0%	60.2%
HHB	1031	729	25	9.0	45.0%	58.2%
HHB	1050	4,384	200	12.2	61.1%	49.7%
HHB	2023	1,442	50	13.2	66.1%	50.2%

Building	Room Number	Square Feet	Number of Seats	WRH	WRH% of Available Hours	Station Occupancy %
HHB	2085	1,213	55	9.3	46.6%	31.6%
HHB	2086	1,307	60	9.0	45.0%	42.0%
HHB	4043	1,938	80	6.5	32.5%	36.5%
HHB	4050	2,695	112	13.0	65.0%	56.5%
HHB	5036	1,208	50	16.6	82.8%	68.1%
HHB	5037	1,967	80	9.0	45.0%	39.0%
HHB	5045	2,730	112	12.8	63.8%	74.4%
MSC	102	1,170	48	13.0	65.0%	45.4%
MSC	104	1,117	48	9.7	48.4%	57.0%
MSC	120	1,560	72	8.0	40.0%	72.6%
MSC	124	1,839	84	9.0	45.0%	62.2%
MSC	130	624	42	9.0	45.0%	43.9%
MSC	164	1,129	70	13.0	65.0%	79.8%
MSC	168	1,129	70	16.2	80.8%	43.3%
MSC	172	1,129	70	12.1	60.7%	74.4%
MSC	185	828	50	17.0	85.0%	61.8%
MSC	187	542	36	13.0	65.0%	67.3%
MSC	364	422	26	17.0	85.0%	88.5%
MSC	372	961	50	17.0	85.0%	57.8%
MSC	376	613	28	13.0	65.0%	69.5%
MSC	378	613	30	11.9	59.7%	54.0%

Building	Room Number	Square Feet	Number of Seats	WRH	WRH% of Available Hours	Station Occupancy %
MSC	384	653	44	17.0	85.0%	42.6%
MSC	386	606	40	17.0	85.0%	78.1%
MSC	388	605	30	8.0	40.0%	61.3%
MSC	93	574	35	4.7	23.4%	30.2%
NFH	156	1,757	157	16.1	80.5%	62.4%
ODH	202A	1,344	83	11.2	56.1%	45.6%
ODH	202B	1,848	111	11.4	57.2%	88.2%
ODH	202C	1,394	83	9.0	45.0%	60.4%
PH	302	1,660	72	13.0	65.0%	43.8%
PH	306	910	48	13.0	65.0%	47.3%
PH	307	938	49	14.0	70.0%	62.1%
PH	308	910	48	9.0	45.0%	47.0%
PH	309	930	49	12.3	61.3%	64.2%
PH	310	732	36	17.0	85.0%	53.6%
PH	312	738	36	13.0	65.0%	62.6%
PH	314	916	48	13.0	65.0%	62.3%
PH	316	918	48	18.9	94.4%	38.9%
PH	318	910	48	13.0	65.0%	20.0%
PH	320	735	36	13.0	65.0%	47.9%

Building	Room Number	Square Feet	Number of Seats	WRH	WRH% of Available Hours	Station Occupancy %
SFH	163	985	65	12.0	60.0%	67.2%
SFH	164	667	30	12.0	60.0%	42.5%
SFH	165	992	63	16.0	80.0%	68.5%
SFH	166	667	30	17.0	85.0%	63.1%
SFH	167	667	48	15.9	79.7%	60.2%
SFH	168	667	30	10.0	50.0%	69.3%
SFH	169	667	40	13.0	65.0%	57.9%
SFH	170	667	48	17.0	85.0%	50.9%
SFH	171	667	30	14.3	71.3%	21.7%
SFH	172	667	48	9.0	45.0%	45.8%
SFH	173	667	48	9.0	45.0%	32.6%
SFH	174	667	48	16.0	80.0%	40.2%
SFH	176	732	48	9.0	45.0%	53.5%
SFH	263	991	65	13.0	65.0%	64.1%
SFH	265	446	25	6.5	32.5%	43.5%
SFH	266	688	48	13.0	65.0%	51.1%
SFH	268	668	48	9.0	45.0%	43.3%
SFH	269	688	48	12.0	60.0%	46.4%
SFH	270	688	48	5.9	29.4%	30.7%
SFH	271	668	48	13.0	65.0%	41.7%
SFH	272	668	48	7.9	39.7%	46.0%
SFH	273	668	48	7.9	39.7%	68.4%

Building	Room Number	Square Feet	Number of Seats	WRH	WRH% of Available Hours	Station Occupancy %
SFH	274	668	48	7.9	39.7%	54.4%
SFH	276	733	48	0.0	0.0%	#DIV/0!
SFH	363	896	70	6.0	30.0%	56.7%
SFH	364	668	48	14.3	71.3%	11.5%
SFH	365	992	75	13.0	65.0%	39.3%
SFH	366	668	36	14.3	71.3%	28.4%
SFH	367	668	48	4.5	22.7%	42.8%
SFH	368	668	48	6.5	32.4%	70.5%
SFH	369	668	48	6.5	32.7%	31.6%
SFH	370	688	48	8.9	44.7%	59.0%
SFH	371	668	38	14.3	71.3%	39.3%
SFH	372	668	48	11.5	57.7%	67.8%
SFH	373	668	48	7.0	35.0%	67.9%
SFH	374	668	48	12.3	61.4%	37.7%
SFH	376	732	50	17.0	85.0%	36.4%
VAR	205	1,151	85	17.0	85.0%	45.7%
VAR	206	1,184	85	11.0	55.0%	33.5%
VAR	479	998	30	13.0	65.0%	80.3%
WH	102	870	60	13.0	65.0%	51.4%
WH	105	856	60	9.0	45.0%	56.3%

Building	Room Number	Square Feet	Number of Seats	WRH	WRH% of Available Hours	Station Occupancy %
WH	124	1,062	85	17.0	85.0%	51.1%
WH	301	306	16	13.0	65.0%	59.6%
WH	313	500	30	13.0	65.0%	59.0%
WH	416	372	15	0.0	0.0%	0.0%
Totals	123	125,759	7,194	1,479		
Averages		1,022	58	12.0	60.1%	57.4%



Hannah Hall

Report 5: Evening Utilization - Fall 2017

- Evening Utilization 5-10 p.m.; Monday-Friday
- 25 Available Hours per Week

Dodge Hall (DH)	North Foundation Hall (NFH)
Engineering Center (EC)	O'Dowd Hall (ODH)
Elliott Hall (EH)	Pawley Hall (PH)
Hannah Hall (HH)	South Foundation Hall (SFH)
Human Health Building (HHB)	Varner Hall (VH)
Math & Science Center (MSC)	Wilson Hall (WH)

Building	Room Number	Square Feet	Number of Seats	WRH	WRH% of Available Hours	Station Occupancy %
DH	127	1741	92	14.10	56.4%	58.1%
DH	135	947	48	8.82	35.3%	45.0%
DH	136B	470	21	4.00	16.0%	33.3%
DH	200	1126	95	8.55	34.2%	47.4%
DH	201	3004	314	6.26	25.0%	27.1%
DH	202	702	52	8.22	32.9%	52.9%
DH	203	990	70	8.05	32.2%	70.1%
DH	204	374	30	14.72	58.9%	31.5%
DH	236	394	30	8.00	32.0%	41.7%
DH	237	389	24	8.00	32.0%	37.5%
EC	116	3373	200	6.00	24.0%	49.1%
EC	254	2035	100	9.05	36.2%	56.1%
EC	275	1333	50	18.00	72.0%	62.4%
EC	279	1329	50	12.00	48.0%	71.3%
EC	281	1350	50	14.25	57.0%	81.2%
EH	204	541	30	8.10	32.4%	32.7%
EH	206	523	30	13.10	52.4%	37.5%

Building	Room Number	Square Feet	Number of Seats	WRH	WRH% of Available Hours	Station Occupancy %
EH	208	686	40	10.65	42.6%	72.2%
EH	210	683	40	12.70	50.8%	58.0%
EH	212	696	40	14.63	58.5%	62.0%
EH	214	902	48	14.20	56.8%	72.4%
EH	235	1021	40	14.20	56.8%	52.2%
EH	237	1026	40	17.42	69.7%	51.7%
EH	239	1018	40	14.20	56.8%	72.0%
EH	242	1561	60	7.98	31.9%	49.7%
HH	113	921	24	7.55	30.2%	35.5%
HH	123	777	36	12.55	50.2%	41.4%
HH	190	2131	187	8.86	35.4%	44.5%
HH	195	2068	187	2.13	8.5%	75.4%
HH	220	548	40	15.20	60.8%	39.7%
HH	225	422	30	8.55	34.2%	26.7%
HH	233	1348	60	16.00	64.0%	52.5%
HHB	1005	1828	80	13.65	54.6%	38.1%
HHB	1006	1563	50	14.37	57.5%	67.5%
HHB	1031	729	25	8.55	34.2%	50.5%
HHB	1050	4384	200	0.00	0.0%	
HHB	2023	1442	50	11.82	47.3%	41.9%

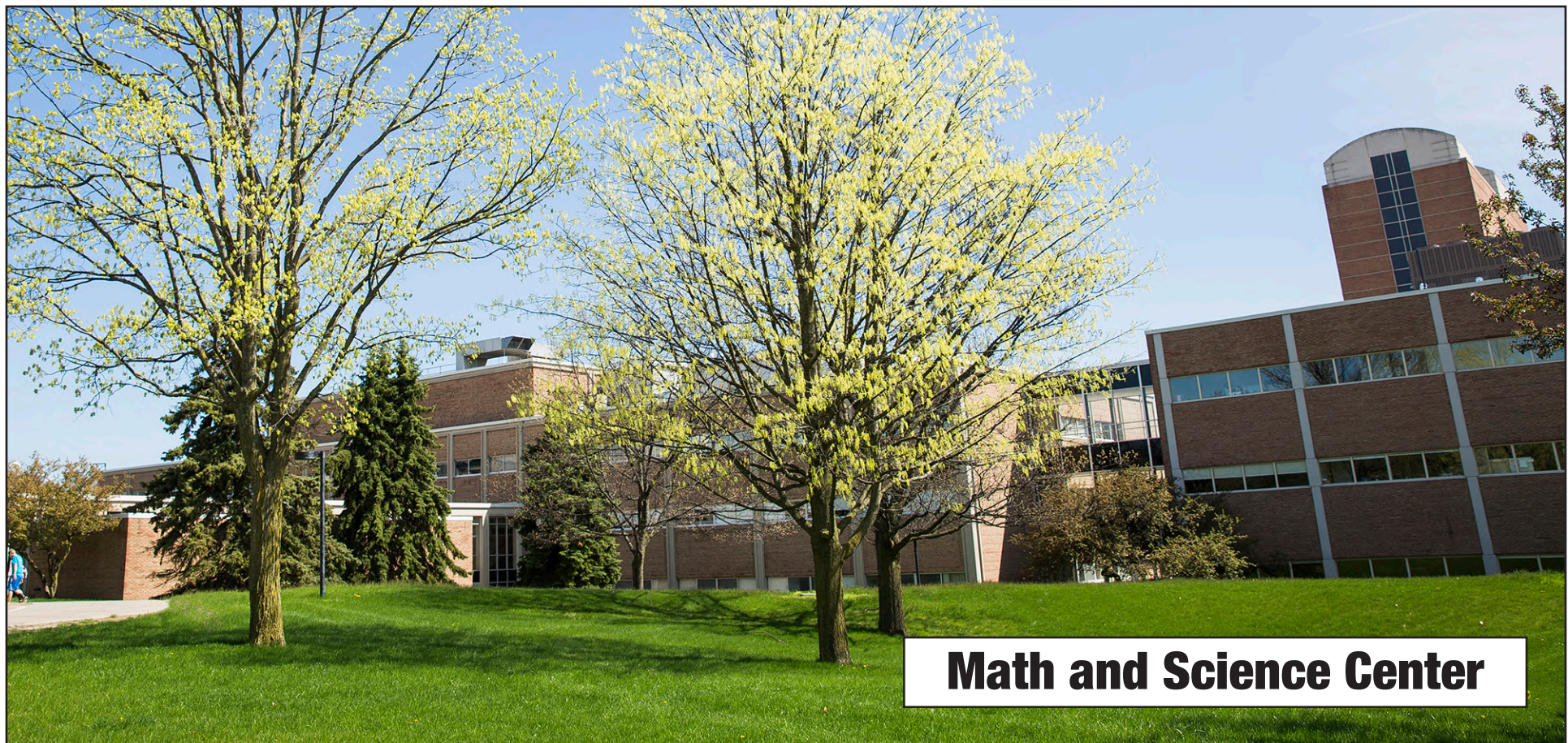
Building	Room Number	Square Feet	Number of Seats	WRH	WRH% of Available Hours	Station Occupancy %
HHB	2085	1213	55	9.10	36.4%	24.9%
HHB	2086	1307	60	13.70	54.8%	70.5%
HHB	4043	1938	80	8.27	33.1%	62.7%
HHB	4050	2695	112	9.00	36.0%	72.0%
HHB	5036	1208	50	9.65	38.6%	42.6%
HHB	5037	1967	80	6.55	26.2%	34.9%
HHB	5045	2730	112	9.10	36.4%	29.1%
MSC	102	1170	48	11.65	46.6%	14.6%
MSC	104	1117	48	14.37	57.5%	41.4%
MSC	120	1560	72	16.60	66.4%	66.0%
MSC	124	1839	84	12.05	48.2%	43.5%
MSC	130	624	42	14.20	56.8%	53.3%
MSC	164	1129	70	13.10	52.4%	62.5%
MSC	168	1129	70	11.15	44.6%	52.3%
MSC	172	1129	70	12.05	48.2%	42.0%
MSC	185	828	50	12.03	48.1%	52.4%
MSC	187	542	36	17.00	68.0%	58.0%
MSC	364	422	26	0.00	0.0%	
MSC	372	961	50	9.05	36.2%	59.5%
MSC	376	613	28	4.00	16.0%	28.6%
MSC	378	613	30	11.22	44.9%	37.4%

Building	Room Number	Square Feet	Number of Seats	WRH	WRH% of Available Hours	Station Occupancy %
MSC	384	653	44	10.65	42.6%	51.5%
MSC	386	606	40	16.00	64.0%	45.0%
MSC	388	605	30	13.00	52.0%	17.9%
MSC	93	574	35	14.00	56.0%	31.8%
NFH	156	1757	157	5.37	21.5%	70.2%
ODH	202A	1344	83	10.65	42.6%	55.8%
ODH	202B	1848	111	4.55	18.2%	47.8%
ODH	202C	1394	83	8.10	32.4%	72.1%
PH	302	1660	72	10.65	42.6%	39.4%
PH	306	910	48	15.20	60.8%	33.4%
PH	307	938	49	14.20	56.8%	31.6%
PH	308	910	48	10.65	42.6%	50.7%
PH	309	930	49	14.20	56.8%	39.3%
PH	310	732	36	11.65	46.6%	36.1%
PH	312	738	36	11.10	44.4%	41.3%
PH	314	916	48	15.20	60.8%	52.4%
PH	316	918	48	15.20	60.8%	63.5%
PH	318	910	48	10.82	43.3%	28.9%
PH	320	735	36	11.10	44.4%	55.3%

Building	Room Number	Square Feet	Number of Seats	WRH	WRH% of Available Hours	Station Occupancy %
SFH	163	985	65	16.10	64.4%	65.4%
SFH	164	667	30	4.05	16.2%	47.4%
SFH	165	992	63	18.00	72.0%	95.1%
SFH	166	667	30	17.00	68.0%	57.3%
SFH	167	667	48	14.20	56.8%	41.7%
SFH	168	667	30	15.10	60.4%	47.1%
SFH	169	667	40	10.55	42.2%	39.5%
SFH	170	667	48	15.20	60.8%	39.0%
SFH	171	667	30	8.00	32.0%	66.7%
SFH	172	667	48	11.65	46.6%	41.7%
SFH	173	667	48	16.10	64.4%	22.6%
SFH	174	667	48	15.70	62.8%	36.6%
SFH	176	732	48	14.37	57.5%	52.8%
SFH	263	991	65	8.55	34.2%	84.1%
SFH	265	446	25	10.98	43.9%	33.3%
SFH	266	688	48	14.70	58.8%	49.1%
SFH	268	668	48	14.20	56.8%	56.3%
SFH	269	688	48	16.20	64.8%	46.0%
SFH	270	688	48	7.10	28.4%	46.9%
SFH	271	668	48	13.70	54.8%	41.2%
SFH	272	668	48	10.65	42.6%	24.3%
SFH	273	668	48	10.65	42.6%	34.0%

Building	Room Number	Square Feet	Number of Seats	WRH	WRH% of Available Hours	Station Occupancy %
SFH	274	668	48	3.05	12.2%	37.5%
SFH	276	733	48	6.60	26.4%	51.5%
SFH	363	896	70	16.00	64.0%	93.2%
SFH	364	668	48	12.00	48.0%	40.3%
SFH	365	992	75	7.10	28.4%	30.0%
SFH	366	668	36	11.10	44.4%	46.2%
SFH	367	668	48	9.65	38.6%	22.2%
SFH	368	668	48	12.70	50.8%	51.5%
SFH	369	668	48	14.70	58.8%	34.9%
SFH	370	688	48	12.70	50.8%	59.8%
SFH	371	668	38	10.65	42.6%	29.8%
SFH	372	668	48	9.65	38.6%	55.9%
SFH	373	668	48	13.20	52.8%	72.3%
SFH	374	668	48	9.65	38.6%	45.9%
SFH	376	732	50	13.70	54.8%	46.5%
VAR	205	1151	85	11.65	46.6%	39.2%
VAR	206	1184	85	14.20	56.8%	17.9%
VAR	479	998	30	15.20	60.8%	46.4%
WH	102	870	60	13.20	52.8%	53.3%
WH	105	856	60	11.60	46.4%	77.1%

Building	Room Number	Square Feet	Number of Seats	WRH	WRH% of Available Hours	Station Occupancy %
WH	124	1062	85	4.55	18.2%	47.2%
WH	301	306	16	8.55	34.2%	46.2%
WH	313	500	30	11.60	46.4%	50.3%
WH	416	372	15	0.00	0.0%	0.0%
Totals	123	125,759	7,194	1,376		
Averages		1,022	58	11.19	44.8%	49.9%



Report 6: Saturday Utilization - Fall 2017

- Saturday Utilization 8 a.m. to 5 p.m.
- 9 Available Hours per Week
- 12 rooms had a class meeting at least one week during the term. The following table lists these rooms, number of Saturdays scheduled, and the average hours used when the room was scheduled.

Building	Room	Square Feet	Seats	# of Saturdays Scheduled During Term	Avg WRH	WRH% of Available Hours	Station Occupancy %
DH	204	374	30	13	3.7	41%	20%
EH	204	541	30	7	3.5	39%	20%
EH	206	523	30	6	3.5	39%	17%
EH	235	1,021	40	3	5.2	58%	13%
EH	237	1,026	40	8	8.5	94%	37%
HH	113	921	24	13	4.0	45%	42%
MSC	364	422	26	13	3.7	41%	15%
PH	310	732	36	13	3.7	41%	39%
PH	312	738	36	8	6.5	72%	28%
PH	320	735	36	2	6.2	69%	33%
SFH	166	667	30	13	3.5	39%	20%
SFH	168	667	30	13	3.5	39%	80%
Totals/ Averages	12	8,367	388	112	4.6	52%	31%

Report 7: All Day Utilization – Winter 2018

- All Day Utilization 8 a.m. to 10 p.m.; Monday-Friday
- 75 Available Hours per Week

Dodge Hall (DH)	North Foundation Hall (NFH)
Engineering Center (EC)	O'Dowd Hall (ODH)
Elliott Hall (EH)	Pawley Hall (PH)
Hannah Hall (HH)	South Foundation Hall (SFH)
Human Health Building (HHB)	Varner Hall (VH)
Math & Science Center (MSC)	Wilson Hall (WH)

Building	Room Number	Square Feet	Number of Seats	WRH	WRH% of Available Hours	Station Occupancy %
DH	127	1,741	92	39.3	52.30%	60.70%
DH	135	947	48	46.3	61.70%	71.90%
DH	136B	470	21	40	53.30%	57.60%
DH	200	1,126	95	31.5	42.10%	60.30%
DH	201	3,004	314	27.1	36.20%	45.00%
DH	202	702	52	32.1	42.70%	69.00%
DH	203	990	70	28.2	37.60%	61.70%
DH	204	374	30	40	53.30%	58.00%
DH	236	394	30	28	37.30%	62.90%
DH	237	389	24	53.5	71.40%	73.40%
EC	116	3,373	200	35.6	47.40%	51.20%
EC	254	2,035	100	45.3	60.40%	55.80%
EC	275	1,333	50	48	64.00%	75.80%
EC	279	1,329	50	41.5	55.40%	67.20%
EC	281	1,350	50	42.1	56.10%	68.10%
EH	204	541	30	51.1	68.10%	49.90%
EH	206	523	30	54.7	73.00%	69.60%

Building	Room Number	Square Feet	Number of Seats	WRH	WRH% of Available Hours	Station Occupancy %
EH	208	686	40	32.6	43.40%	63.70%
EH	210	683	40	47.8	63.80%	65.60%
EH	212	696	40	43.3	57.80%	74.60%
EH	214	902	48	46.6	62.10%	64.20%
EH	235	1,021	40	34.6	46.10%	85.50%
EH	237	1,026	40	43.1	57.40%	62.10%
EH	239	1,018	40	42.1	56.10%	75.60%
EH	242	1,561	60	48.2	64.30%	57.60%
HH	113	921	24	50.2	66.90%	63.40%
HH	123	777	36	51.1	68.10%	73.00%
HH	190	2,131	187	48.4	64.50%	63.40%
HH	195	2,068	187	41.6	55.40%	61.60%
HH	220	548	40	41.3	55.10%	52.70%
HH	225	422	30	27.5	36.70%	66.40%
HH	233	1,348	60	40	53.30%	62.50%
HHB	1005	1,828	80	39.2	52.20%	64.10%
HHB	1006	1,563	50	42.9	57.20%	59.30%
HHB	1031	729	25	34.2	45.60%	54.70%
HHB	1050	4,384	200	30.5	40.70%	57.00%
HHB	2023	1,442	50	38.8	51.70%	52.30%

Building	Room Number	Square Feet	Number of Seats	WRH	WRH% of Available Hours	Station Occupancy %
HHB	2085	1,213	55	36.9	49.20%	49.20%
HHB	2086	1,307	60	44.8	59.70%	60.40%
HHB	4043	1,938	80	24.7	32.90%	45.00%
HHB	4050	2,695	112	29.5	39.40%	72.60%
HHB	5036	1,208	50	49.4	65.90%	63.10%
HHB	5037	1,967	80	33	43.90%	42.90%
HHB	5045	2,730	112	36.5	48.70%	71.80%
MSC	102	1,170	48	48.3	64.50%	48.40%
MSC	104	1,117	48	47.1	62.80%	52.00%
MSC	120	1,560	72	43.5	58.10%	57.70%
MSC	124	1,839	84	36.7	48.90%	63.40%
MSC	130	624	42	44.1	58.80%	56.30%
MSC	164	1,129	70	51.1	68.20%	75.90%
MSC	168	1,129	70	47.1	62.80%	71.30%
MSC	172	1,129	70	53.2	70.90%	75.50%
MSC	185	828	50	47.1	62.80%	76.40%
MSC	187	542	36	45.2	60.30%	49.20%
MSC	364	422	26	41.2	54.90%	52.60%
MSC	372	961	50	44.2	58.90%	57.20%
MSC	376	613	28	47.5	63.40%	56.00%
MSC	378	613	30	32	42.70%	62.90%

Building	Room Number	Square Feet	Number of Seats	WRH	WRH% of Available Hours	Station Occupancy %
MSC	384	653	44	47	62.70%	61.60%
MSC	386	606	40	46.6	62.10%	58.50%
MSC	388	605	30	50.7	67.50%	64.60%
MSC	93	574	35	40.4	53.90%	50.30%
NFH	156	1,757	157	43.8	58.40%	41.80%
ODH	202A	1,344	83	17.5	23.40%	49.30%
ODH	202B	1,848	111	29.4	39.20%	67.80%
ODH	202C	1,394	83	24.2	32.20%	55.20%
PH	302	1,660	72	29.8	39.80%	53.60%
PH	306	910	48	42.7	56.90%	60.20%
PH	307	938	49	34.2	45.60%	39.20%
PH	308	910	48	41.7	55.60%	42.90%
PH	309	930	49	28.2	37.60%	55.50%
PH	310	732	36	46.2	61.60%	53.20%
PH	312	738	36	41.4	55.20%	61.30%
PH	314	916	48	37.8	50.30%	44.30%
PH	316	918	48	29.1	38.80%	51.40%
PH	318	910	48	41.8	55.70%	42.20%
PH	320	735	36	44.3	59.10%	62.90%

Building	Room Number	Square Feet	Number of Seats	WRH	WRH% of Available Hours	Station Occupancy %
SFH	163	985	65	36	48.00%	74.20%
SFH	164	667	30	48	64.00%	51.40%
SFH	165	992	63	43.1	57.50%	74.50%
SFH	166	667	30	51.1	68.10%	52.60%
SFH	167	667	48	46.6	62.20%	48.20%
SFH	168	667	30	50.7	67.50%	34.70%
SFH	169	667	40	53.7	71.60%	51.70%
SFH	170	667	48	45.1	60.10%	46.60%
SFH	171	667	30	42.1	56.10%	33.30%
SFH	172	667	48	42.2	56.30%	49.70%
SFH	173	667	48	48	64.00%	46.70%
SFH	174	667	48	42.1	56.20%	45.70%
SFH	176	732	48	46.1	61.50%	40.80%
SFH	263	991	65	48	64.00%	74.90%
SFH	265	446	25	38	50.70%	27.60%
SFH	266	688	48	43.1	57.50%	37.30%
SFH	268	668	48	38.6	51.50%	46.90%
SFH	269	688	48	31.1	41.50%	41.80%
SFH	270	688	48	43.1	57.50%	42.30%
SFH	271	668	48	42.6	56.90%	42.30%
SFH	272	668	48	43.5	58.10%	41.50%
SFH	273	668	48	39.1	52.10%	41.90%
SFH	274	668	48	36	48.00%	44.60%
SFH	276	733	48	37.4	49.90%	47.70%

Building	Room Number	Square Feet	Number of Seats	WRH	WRH% of Available Hours	Station Occupancy %
SFH	363	896	70	31.8	42.40%	66.90%
SFH	364	668	48	49.7	66.30%	20.30%
SFH	365	992	75	33.7	44.90%	59.40%
SFH	366	668	36	38.1	50.80%	27.30%
SFH	367	668	48	39.1	52.10%	37.00%
SFH	368	668	48	38.1	50.90%	51.20%
SFH	369	668	48	31.5	42.10%	49.10%
SFH	370	688	48	43.1	57.50%	41.50%
SFH	371	668	38	44.2	58.90%	32.30%
SFH	372	668	48	41.1	54.80%	53.50%
SFH	373	668	48	35.5	47.40%	45.50%
SFH	374	668	48	49.5	66.00%	51.90%
SFH	376	732	50	41.7	55.60%	39.80%
VAR	205	1,151	85	37.2	49.60%	39.00%
VAR	206	1,184	85	25.7	34.30%	34.90%
VAR	479	998	30	46.2	61.60%	60.20%
WH	102	870	60	35.1	46.80%	62.40%
WH	105	856	60	31.5	42.10%	57.40%
WH	124	1,062	85	23.5	31.40%	59.10%
WH	301	306	16	38.2	50.90%	67.80%

Building	Room Number	Square Feet	Number of Seats	WRH	WRH% of Available Hours	Station Occupancy %
WH	313	500	30	39.5	52.70%	51.20%
WH	416	372	15	28	37.30%	50.50%
Totals	123	125,759	7,194	4,966		
Averages		1,022	58	40.4	53.80%	56.00%



Report 8: Daytime Utilization - Winter 2018

Daytime Utilization – 8 a.m. to 5 p.m.; Monday-Friday

- 45 Available Hours per Week

Dodge Hall (DH)	North Foundation Hall (NFH)
Engineering Center (EC)	O'Dowd Hall (ODH)
Elliott Hall (EH)	Pawley Hall (PH)
Hannah Hall (HH)	South Foundation Hall (SFH)
Human Health Building (HHB)	Varner Hall (VH)
Math & Science Center (MSC)	Wilson Hall (WH)

Building	Room Number	Square Feet	Number of Seats	WRH	WRH% of Available Hours	Station Occupancy %
DH	127	1,741	92	36.3	80.60%	62.90%
DH	135	947	48	34.3	76.20%	82.70%
DH	136B	470	21	24	53.30%	72.20%
DH	200	1,126	95	25.5	56.80%	63.00%
DH	201	3,004	314	27.1	60.30%	45.00%
DH	202	702	52	24	53.40%	69.20%
DH	203	990	70	21.8	48.40%	63.20%
DH	204	374	30	24	53.30%	68.30%
DH	236	394	30	28	62.20%	62.90%
DH	237	389	24	40.7	90.40%	79.50%
EC	116	3,373	200	33.6	74.60%	51.50%
EC	254	2,035	100	33.1	73.60%	62.90%
EC	275	1,333	50	31	68.90%	92.70%
EC	279	1,329	50	30	66.70%	68.70%
EC	281	1,350	50	30	66.80%	66.60%
EH	204	541	30	40	88.90%	46.00%
EH	206	523	30	41	91.10%	71.80%

Building	Room Number	Square Feet	Number of Seats	WRH	WRH% of Available Hours	Station Occupancy %
EH	208	686	40	18.5	41.10%	78.60%
EH	210	683	40	32.2	71.60%	58.50%
EH	212	696	40	31.1	69.20%	79.80%
EH	214	902	48	32.4	72.00%	57.70%
EH	235	1,021	40	21.9	48.60%	85.60%
EH	237	1,026	40	28.9	64.10%	53.90%
EH	239	1,018	40	26.9	59.80%	80.60%
EH	242	1,561	60	36	80.00%	63.50%
HH	113	921	24	36	80.00%	69.90%
HH	123	777	36	35	77.80%	71.30%
HH	190	2,131	187	40.9	90.90%	64.50%
HH	195	2,068	187	35.6	79.00%	63.30%
HH	220	548	40	32	71.10%	52.80%
HH	225	422	30	20	44.40%	69.30%
HH	233	1,348	60	28	62.20%	62.90%
HHB	1005	1,828	80	23	51.10%	85.90%
HHB	1006	1,563	50	28.2	62.70%	48.50%
HHB	1031	729	25	24	53.30%	70.70%
HHB	1050	4,384	200	23.4	52.00%	61.40%
HHB	2023	1,442	50	23.6	52.40%	52.00%

Building	Room Number	Square Feet	Number of Seats	WRH	WRH% of Available Hours	Station Occupancy %
HHB	2085	1,213	55	28.3	63.00%	47.50%
HHB	2086	1,307	60	34.9	77.60%	61.80%
HHB	4043	1,938	80	18.9	42.10%	51.10%
HHB	4050	2,695	112	19	42.20%	79.60%
HHB	5036	1,208	50	36.9	82.00%	66.20%
HHB	5037	1,967	80	21.9	48.60%	46.70%
HHB	5045	2,730	112	32.5	72.30%	78.90%
MSC	102	1,170	48	29.9	66.40%	51.50%
MSC	104	1,117	48	30	66.70%	57.00%
MSC	120	1,560	72	31	68.90%	68.70%
MSC	124	1,839	84	31.1	69.20%	64.30%
MSC	130	624	42	33	73.30%	55.80%
MSC	164	1,129	70	35.1	78.10%	78.60%
MSC	168	1,129	70	31	68.90%	70.90%
MSC	172	1,129	70	38.1	84.70%	75.00%
MSC	185	828	50	32	71.10%	80.00%
MSC	187	542	36	31	68.90%	57.60%
MSC	364	422	26	28.2	62.70%	66.90%
MSC	372	961	50	33.1	73.60%	60.60%
MSC	376	613	28	36	80.00%	57.10%
MSC	378	613	30	23	51.10%	74.20%

Building	Room Number	Square Feet	Number of Seats	WRH	WRH% of Available Hours	Station Occupancy %
MSC	384	653	44	33.9	75.40%	59.70%
MSC	386	606	40	36	80.00%	56.70%
MSC	388	605	30	40	88.90%	70.00%
MSC	93	574	35	32.4	72.10%	47.90%
NFH	156	1,757	157	34.1	75.80%	40.10%
ODH	202A	1,344	83	10.9	24.30%	52.80%
ODH	202B	1,848	111	22.3	49.50%	80.40%
ODH	202C	1,394	83	18.7	41.60%	53.30%
PH	302	1,660	72	21.8	48.30%	61.70%
PH	306	910	48	31	68.90%	69.10%
PH	307	938	49	19	42.20%	52.60%
PH	308	910	48	30.5	67.90%	39.70%
PH	309	930	49	18	40.10%	54.60%
PH	310	732	36	35.5	79.00%	60.20%
PH	312	738	36	28	62.20%	69.80%
PH	314	916	48	27.1	60.20%	49.40%
PH	316	918	48	18.9	42.10%	55.60%
PH	318	910	48	30.1	66.90%	38.10%
PH	320	735	36	30.1	66.90%	54.30%

Building	Room Number	Square Feet	Number of Seats	WRH	WRH% of Available Hours	Station Occupancy %
SFH	163	985	65	28	62.20%	77.40%
SFH	164	667	30	36	80.00%	53.00%
SFH	165	992	63	31	68.90%	75.90%
SFH	166	667	30	42	93.30%	52.70%
SFH	167	667	48	36	80.00%	55.30%
SFH	168	667	30	38	84.40%	33.20%
SFH	169	667	40	40	88.90%	56.30%
SFH	170	667	48	36	80.00%	46.50%
SFH	171	667	30	31	68.90%	17.50%
SFH	172	667	48	27	60.00%	53.90%
SFH	173	667	48	36	80.00%	50.20%
SFH	174	667	48	32	71.10%	44.80%
SFH	176	732	48	35	77.80%	41.40%
SFH	263	991	65	40	88.90%	79.20%
SFH	265	446	25	31	68.90%	26.00%
SFH	266	688	48	35	77.80%	37.10%
SFH	268	668	48	27	60.00%	42.80%
SFH	269	688	48	23	51.10%	41.40%
SFH	270	688	48	31	68.90%	48.50%
SFH	271	668	48	31	68.90%	43.20%
SFH	272	668	48	34	75.60%	40.70%
SFH	273	668	48	27	60.00%	42.40%

Building	Room Number	Square Feet	Number of Seats	WRH	WRH% of Available Hours	Station Occupancy %
SFH	274	668	48	23.4	52.10%	46.20%
SFH	276	733	48	26	57.80%	43.90%
SFH	363	896	70	23.8	52.90%	71.00%
SFH	364	668	48	38.8	86.10%	12.10%
SFH	365	992	75	18	40.00%	64.10%
SFH	366	668	36	31	68.90%	17.40%
SFH	367	668	48	27	60.00%	36.40%
SFH	368	668	48	28	62.20%	48.20%
SFH	369	668	48	23	51.10%	46.30%
SFH	370	688	48	35	77.80%	43.40%
SFH	371	668	38	31	68.90%	17.10%
SFH	372	668	48	29.9	66.50%	46.20%
SFH	373	668	48	32	71.10%	47.10%
SFH	374	668	48	37.9	84.30%	50.50%
SFH	376	732	50	28	62.20%	37.10%
VAR	205	1,151	85	24	53.30%	40.20%
VAR	206	1,184	85	15.6	34.60%	35.80%
VAR	479	998	30	32	71.10%	59.20%
WH	102	870	60	28	62.20%	58.80%
WH	105	856	60	24	53.30%	64.70%

Building	Room Number	Square Feet	Number of Seats	WRH	WRH% of Available Hours	Station Occupancy %
WH	124	1,062	85	19	42.20%	65.30%
WH	301	306	16	24	53.30%	71.90%
WH	313	500	30	31	68.90%	48.30%
WH	416	372	15	27	60.00%	49.10%
Totals	123	125,759	7,194	3,640		
Averages		1,022	58	29.6	65.80%	57.80%



Report 9: Prime Time Utilization - Winter 2018

- Prime Time Utilization 10 a.m. to 3 p.m.; Monday-Friday
- 25 Available Hours per Week

Dodge Hall (DH)	North Foundation Hall (NFH)
Engineering Center (EC)	O'Dowd Hall (ODH)
Elliott Hall (EH)	Pawley Hall (PH)
Hannah Hall (HH)	South Foundation Hall (SFH)
Human Health Building (HHB)	Varner Hall (VH)
Math & Science Center (MSC)	Wilson Hall (WH)

Building	Room Number	Square Feet	Number of Seats	WRH	WRH% of Available Hours	Station Occupancy %
DH	127	1,741.00	92	25	100.00%	59.00%
DH	135	947	48	21.3	85.20%	83.30%
DH	136B	470	21	16	64.00%	82.10%
DH	200	1,126.00	95	17.5	70.20%	68.00%
DH	201	3,004.00	314	17.1	68.60%	40.70%
DH	202	702	52	18.7	74.70%	71.00%
DH	203	990	70	18.5	73.90%	68.00%
DH	204	374	30	21	84.00%	69.00%
DH	236	394	30	17	68.00%	68.20%
DH	237	389	24	22	88.00%	82.20%
EC	116	3,373.00	200	22.9	91.80%	50.40%
EC	254	2,035.00	100	18.1	72.40%	66.10%
EC	275	1,333.00	50	22	88.00%	94.20%
EC	279	1,329.00	50	22	88.00%	74.00%
EC	281	1,350.00	50	19.7	78.70%	62.40%
EH	204	541	30	23	92.00%	46.10%
EH	206	523	30	23	92.00%	75.10%

Building	Room Number	Square Feet	Number of Seats	WRH	WRH% of Available Hours	Station Occupancy %
EH	208	686	40	10.6	42.40%	80.50%
EH	210	683	40	17.2	68.80%	74.00%
EH	212	696	40	15.3	61.10%	70.50%
EH	214	902	48	17.5	70.10%	64.80%
EH	235	1,021.00	40	14	56.00%	84.60%
EH	237	1,026.00	40	21.9	87.40%	54.90%
EH	239	1,018.00	40	16.6	66.60%	89.80%
EH	242	1,561.00	60	22	88.00%	62.00%
HH	113	921	24	19	76.00%	64.00%
HH	123	777	36	22	88.00%	71.50%
HH	190	2,131.00	187	23.9	95.60%	65.50%
HH	195	2,068.00	187	19.6	78.20%	63.70%
HH	220	548	40	22	88.00%	54.30%
HH	225	422	30	14	56.00%	80.50%
HH	233	1,348.00	60	21	84.00%	59.20%
HHB	1005	1,828.00	80	16	64.00%	85.00%
HHB	1006	1,563.00	50	20	80.00%	45.60%
HHB	1031	729	25	18	72.00%	73.80%
HHB	1050	4,384.00	200	16.3	65.00%	64.10%
HHB	2023	1,442.00	50	15.7	62.60%	46.80%

Building	Room Number	Square Feet	Number of Seats	WRH	WRH% of Available Hours	Station Occupancy %
HHB	2085	1,213.00	55	17.3	69.40%	48.00%
HHB	2086	1,307.00	60	23	92.00%	54.30%
HHB	4043	1,938.00	80	14	56.00%	51.40%
HHB	4050	2,695.00	112	12	48.00%	85.70%
HHB	5036	1,208.00	50	20.1	80.30%	66.90%
HHB	5037	1,967.00	80	12.9	51.70%	49.10%
HHB	5045	2,730.00	112	18.1	72.50%	75.40%
MSC	102	1,170.00	48	15.9	63.40%	64.60%
MSC	104	1,117.00	48	18	72.00%	63.20%
MSC	120	1,560.00	72	20	80.00%	67.80%
MSC	124	1,839.00	84	23.1	92.50%	62.50%
MSC	130	624	42	22	88.00%	62.80%
MSC	164	1,129.00	70	24.1	96.50%	72.20%
MSC	168	1,129.00	70	22	88.00%	65.70%
MSC	172	1,129.00	70	25	100.00%	78.20%
MSC	185	828	50	23	92.00%	86.30%
MSC	187	542	36	22	88.00%	60.10%
MSC	364	422	26	22.2	88.80%	65.70%
MSC	372	961	50	21.2	84.70%	60.40%
MSC	376	613	28	23	92.00%	45.20%
MSC	378	613	30	14	56.00%	81.90%

Building	Room Number	Square Feet	Number of Seats	WRH	WRH% of Available Hours	Station Occupancy %
MSC	384	653	44	22	88.00%	51.90%
MSC	386	606	40	23	92.00%	53.00%
MSC	388	605	30	23	92.00%	69.60%
MSC	93	574	35	21.8	87.20%	55.10%
NFH	156	1,757.00	157	23	92.00%	30.80%
ODH	202A	1,344.00	83	7.9	31.70%	52.70%
ODH	202B	1,848.00	111	17.5	70.10%	84.40%
ODH	202C	1,394.00	83	13	52.00%	54.70%
PH	302	1,660.00	72	15.3	61.30%	78.50%
PH	306	910	48	22	88.00%	63.60%
PH	307	938	49	12	48.00%	64.60%
PH	308	910	48	20	80.00%	36.70%
PH	309	930	49	12.1	48.20%	48.70%
PH	310	732	36	21	84.00%	70.00%
PH	312	738	36	17	68.00%	68.30%
PH	314	916	48	18	72.00%	47.00%
PH	316	918	48	14.9	59.70%	57.10%
PH	318	910	48	20.1	80.40%	42.20%
PH	320	735	36	17.1	68.40%	53.00%

Building	Room Number	Square Feet	Number of Seats	WRH	WRH% of Available Hours	Station Occupancy %
SFH	163	985	65	15	60.00%	76.70%
SFH	164	667	30	23	92.00%	39.40%
SFH	165	992	63	19	76.00%	86.20%
SFH	166	667	30	23	92.00%	50.90%
SFH	167	667	48	23	92.00%	57.50%
SFH	168	667	30	23	92.00%	37.70%
SFH	169	667	40	23	92.00%	47.80%
SFH	170	667	48	23	92.00%	54.70%
SFH	171	667	30	16.8	67.00%	19.30%
SFH	172	667	48	18	72.00%	50.20%
SFH	173	667	48	23	92.00%	49.90%
SFH	174	667	48	22	88.00%	43.60%
SFH	176	732	48	22	88.00%	40.50%
SFH	263	991	65	23	92.00%	76.80%
SFH	265	446	25	16.8	67.00%	14.40%
SFH	266	688	48	22	88.00%	28.60%
SFH	268	668	48	18	72.00%	42.40%
SFH	269	688	48	14	56.00%	42.90%
SFH	270	688	48	18	72.00%	43.10%
SFH	271	668	48	20	80.00%	42.10%
SFH	272	668	48	22	88.00%	39.80%
SFH	273	668	48	22	88.00%	41.30%

Building	Room Number	Square Feet	Number of Seats	WRH	WRH% of Available Hours	Station Occupancy %
SFH	274	668	48	14	56.00%	42.30%
SFH	276	733	48	16	64.00%	35.40%
SFH	363	896	70	17.4	69.70%	66.90%
SFH	364	668	48	24.5	98.00%	13.00%
SFH	365	992	75	12	48.00%	52.90%
SFH	366	668	36	21.2	84.70%	19.30%
SFH	367	668	48	20	80.00%	41.30%
SFH	368	668	48	20	80.00%	51.70%
SFH	369	668	48	18	72.00%	48.10%
SFH	370	688	48	22	88.00%	41.70%
SFH	371	668	38	24.5	98.00%	18.70%
SFH	372	668	48	16	64.00%	45.30%
SFH	373	668	48	19	76.00%	57.70%
SFH	374	668	48	22	88.00%	41.30%
SFH	376	732	50	22	88.00%	34.20%
VAR	205	1,151.00	85	16	64.00%	42.40%
VAR	206	1,184.00	85	13.7	54.70%	36.80%
VAR	479	998	30	22	88.00%	57.90%
WH	102	870	60	23	92.00%	67.30%
WH	105	856	60	20	80.00%	74.70%

Building	Room Number	Square Feet	Number of Seats	WRH	WRH% of Available Hours	Station Occupancy %
WH	124	1,062.00	85	16	64.00%	58.80%
WH	301	306	16	18	72.00%	71.50%
WH	313	500	30	17	68.00%	53.30%
WH	416	372	15	18	72.00%	45.90%
Totals	123	125,759	7,194	2,363		
Averages		1,022	58	19.2	76.80%	57.60%



Report 10: Off Peak Utilization - Winter 2018

- Off Peak Utilization 8-10 a.m.; 3-5 p.m.; Monday-Friday
- 20 Available Hours per Week.

Dodge Hall (DH)	North Foundation Hall (NFH)
Engineering Center (EC)	O'Dowd Hall (ODH)
Elliott Hall (EH)	Pawley Hall (PH)
Hannah Hall (HH)	South Foundation Hall (SFH)
Human Health Building (HHB)	Varner Hall (VH)
Math & Science Center (MSC)	Wilson Hall (WH)

Building	Room Number	Square Feet	Number of Seats	WRH	WRH% of Available Hours	Station Occupancy %
DH	127	1,741	92	11.3	56.30%	71.50%
DH	135	947	48	13	65.00%	81.70%
DH	136B	470	21	8	40.00%	52.40%
DH	200	1,126	95	8	40.00%	52.00%
DH	201	3,004	314	10	50.00%	52.50%
DH	202	702	52	5.3	26.70%	63.00%
DH	203	990	70	3.3	16.60%	36.60%
DH	204	374	30	3	15.00%	63.30%
DH	236	394	30	11	55.00%	54.50%
DH	237	389	24	18.7	93.30%	76.30%
EC	116	3,373	200	10.6	53.20%	53.90%
EC	254	2,035	100	15	75.00%	58.90%
EC	275	1,333	50	9	45.00%	89.10%
EC	279	1,329	50	8	40.00%	54.00%
EC	281	1,350	50	10.4	51.90%	74.70%
EH	204	541	30	17	85.00%	45.90%
EH	206	523	30	18	90.00%	67.60%

Building	Room Number	Square Feet	Number of Seats	WRH	WRH% of Available Hours	Station Occupancy %
EH	208	686	40	7.9	39.40%	76.10%
EH	210	683	40	15	75.00%	40.70%
EH	212	696	40	15.9	79.30%	88.80%
EH	214	902	48	14.9	74.40%	49.30%
EH	235	1,021	40	7.9	39.30%	87.20%
EH	237	1,026	40	7	35.00%	50.70%
EH	239	1,018	40	10.3	51.30%	65.60%
EH	242	1,561	60	14	70.00%	66.00%
HH	113	921	24	17	85.00%	76.50%
HH	123	777	36	13	65.00%	70.90%
HH	190	2,131	187	17	85.00%	63.00%
HH	195	2,068	187	16	80.00%	62.70%
HH	220	548	40	10	50.00%	49.50%
HH	225	422	30	6	30.00%	43.30%
HH	233	1,348	60	7	35.00%	73.80%
HHB	1005	1,828	80	7	35.00%	87.90%
HHB	1006	1,563	50	8.2	41.00%	55.40%
HHB	1031	729	25	6	30.00%	61.30%
HHB	1050	4,384	200	7.1	35.60%	55.20%
HHB	2023	1,442	50	7.9	39.60%	62.30%

Building	Room Number	Square Feet	Number of Seats	WRH	WRH% of Available Hours	Station Occupancy %
HHB	2085	1,213	55	11	55.00%	46.80%
HHB	2086	1,307	60	11.9	59.70%	76.40%
HHB	4043	1,938	80	4.9	24.70%	50.00%
HHB	4050	2,695	112	7	35.00%	69.00%
HHB	5036	1,208	50	16.8	84.10%	65.30%
HHB	5037	1,967	80	8.9	44.70%	43.20%
HHB	5045	2,730	112	14.4	72.00%	83.40%
MSC	102	1,170	48	14	70.00%	36.60%
MSC	104	1,117	48	12	60.00%	47.70%
MSC	120	1,560	72	11	55.00%	70.50%
MSC	124	1,839	84	8	40.00%	69.60%
MSC	130	624	42	11	55.00%	41.80%
MSC	164	1,129	70	11	55.00%	92.60%
MSC	168	1,129	70	9	45.00%	83.70%
MSC	172	1,129	70	13.1	65.50%	68.90%
MSC	185	828	50	9	45.00%	63.80%
MSC	187	542	36	9	45.00%	51.50%
MSC	364	422	26	6	30.00%	71.20%
MSC	372	961	50	11.9	59.70%	60.90%
MSC	376	613	28	13	65.00%	78.30%
MSC	378	613	30	9	45.00%	62.20%

Building	Room Number	Square Feet	Number of Seats	WRH	WRH% of Available Hours	Station Occupancy %
MSC	384	653	44	11.9	59.70%	74.20%
MSC	386	606	40	13	65.00%	63.10%
MSC	388	605	30	17	85.00%	70.60%
MSC	93	574	35	10.6	53.20%	33.20%
NFH	156	1,757	157	11.1	55.50%	59.20%
ODH	202A	1,344	83	3	15.00%	53.00%
ODH	202B	1,848	111	4.8	23.80%	65.80%
ODH	202C	1,394	83	5.7	28.60%	50.20%
PH	302	1,660	72	6.4	32.20%	21.60%
PH	306	910	48	9	45.00%	82.40%
PH	307	938	49	7	35.00%	32.10%
PH	308	910	48	10.5	52.70%	45.50%
PH	309	930	49	6	29.90%	66.40%
PH	310	732	36	14.5	72.70%	46.10%
PH	312	738	36	11	55.00%	72.20%
PH	314	916	48	9.1	45.50%	54.20%
PH	316	918	48	4	20.00%	50.00%
PH	318	910	48	10	50.00%	30.00%
PH	320	735	36	13	65.00%	56.00%

Building	Room Number	Square Feet	Number of Seats	WRH	WRH% of Available Hours	Station Occupancy %
SFH	163	985	65	13	65.00%	78.10%
SFH	164	667	30	13	65.00%	76.90%
SFH	165	992	63	12	60.00%	59.50%
SFH	166	667	30	19	95.00%	54.90%
SFH	167	667	48	13	65.00%	51.40%
SFH	168	667	30	15	75.00%	26.20%
SFH	169	667	40	17	85.00%	67.60%
SFH	170	667	48	13	65.00%	32.10%
SFH	171	667	30	14.3	71.30%	15.40%
SFH	172	667	48	9	45.00%	61.30%
SFH	173	667	48	13	65.00%	50.80%
SFH	174	667	48	10	50.00%	47.50%
SFH	176	732	48	13	65.00%	42.90%
SFH	263	991	65	17	85.00%	82.50%
SFH	265	446	25	14.3	71.30%	39.60%
SFH	266	688	48	13	65.00%	51.60%
SFH	268	668	48	9	45.00%	43.80%
SFH	269	688	48	9	45.00%	39.10%
SFH	270	688	48	13	65.00%	56.10%
SFH	271	668	48	11	55.00%	45.30%
SFH	272	668	48	12	60.00%	42.40%
SFH	273	668	48	5	25.00%	47.50%

Building	Room Number	Square Feet	Number of Seats	WRH	WRH% of Available Hours	Station Occupancy %
SFH	274	668	48	9.4	47.20%	52.10%
SFH	276	733	48	10	50.00%	57.50%
SFH	363	896	70	6.4	31.90%	82.10%
SFH	364	668	48	14.3	71.30%	10.50%
SFH	365	992	75	6	30.00%	86.70%
SFH	366	668	36	9.8	49.10%	13.20%
SFH	367	668	48	7	35.00%	22.60%
SFH	368	668	48	8	40.00%	39.60%
SFH	369	668	48	5	25.00%	39.60%
SFH	370	688	48	13	65.00%	46.30%
SFH	371	668	38	6.5	32.50%	11.30%
SFH	372	668	48	13.9	69.70%	47.20%
SFH	373	668	48	13	65.00%	31.70%
SFH	374	668	48	15.9	79.70%	63.20%
SFH	376	732	50	6	30.00%	48.00%
VAR	205	1,151	85	8	40.00%	35.90%
VAR	206	1,184	85	1.9	9.40%	28.20%
VAR	479	998	30	10	50.00%	62.00%
WH	102	870	60	5	25.00%	19.70%
WH	105	856	60	4	20.00%	15.00%

Building	Room Number	Square Feet	Number of Seats	WRH	WRH% of Available Hours	Station Occupancy %
WH	124	1,062	85	3	15.00%	100.00%
WH	301	306	16	6	30.00%	72.90%
WH	313	500	30	14	70.00%	42.10%
WH	416	372	15	9	45.00%	55.60%
Totals	123	125,759	7,194	1,277		
Averages		1,022	58	10.4	51.90%	58.00%



Report 11: Evening Utilization - Winter 2018

- Evening Utilization 5-10 p.m.; Monday-Friday
- 25 Available Hours per Week

Dodge Hall (DH)	North Foundation Hall (NFH)
Engineering Center (EC)	O'Dowd Hall (ODH)
Elliott Hall (EH)	Pawley Hall (PH)
Hannah Hall (HH)	South Foundation Hall (SFH)
Human Health Building (HHB)	Varner Hall (VH)
Math & Science Center (MSC)	Wilson Hall (WH)

Building	Room Number	Square Feet	Number of Seats	WRH	WRH% of Available Hours	Station Occupancy %
DH	127	1,741	92	3	12.00%	34.10%
DH	135	947	48	12	48.00%	41.00%
DH	136B	470	21	16	64.00%	35.70%
DH	200	1,126	95	6	24.00%	48.90%
DH	201	3,004	314	0	0.00%	
DH	202	702	52	8.1	32.20%	68.40%
DH	203	990	70	6.4	25.60%	56.40%
DH	204	374	30	16	64.00%	42.50%
DH	236	394	30	0	0.00%	
DH	237	389	24	12.9	51.50%	54.40%
EC	116	3,373	200	2	8.00%	47.00%
EC	254	2,035	100	12.2	48.90%	36.80%
EC	275	1,333	50	17	68.00%	45.10%
EC	279	1,329	50	11.6	46.20%	63.20%
EC	281	1,350	50	12.1	48.20%	71.70%
EH	204	541	30	11.1	44.40%	63.80%
EH	206	523	30	13.8	55.00%	63.00%

Building	Room Number	Square Feet	Number of Seats	WRH	WRH% of Available Hours	Station Occupancy %
EH	208	686	40	14.1	56.40%	44.20%
EH	210	683	40	15.6	62.50%	80.20%
EH	212	696	40	12.2	48.80%	61.30%
EH	214	902	48	14.2	56.80%	79.00%
EH	235	1,021	40	12.7	50.80%	85.40%
EH	237	1,026	40	14.2	56.80%	78.60%
EH	239	1,018	40	15.2	60.80%	66.60%
EH	242	1,561	60	12.2	48.80%	40.00%
HH	113	921	24	14.2	56.80%	46.90%
HH	123	777	36	16.1	64.40%	76.80%
HH	190	2,131	187	7.5	29.80%	57.30%
HH	195	2,068	187	6	24.00%	52.00%
HH	220	548	40	9.3	37.30%	52.30%
HH	225	422	30	7.6	30.20%	58.60%
HH	233	1,348	60	12	48.00%	61.70%
HHB	1005	1,828	80	16.2	64.70%	33.00%
HHB	1006	1,563	50	14.7	58.80%	80.10%
HHB	1031	729	25	10.2	40.90%	17.20%
HHB	1050	4,384	200	7.1	28.40%	42.50%
HHB	2023	1,442	50	15.2	60.80%	52.80%

Building	Room Number	Square Feet	Number of Seats	WRH	WRH% of Available Hours	Station Occupancy %
HHB	2085	1,213	55	8.6	34.20%	55.00%
HHB	2086	1,307	60	9.8	39.30%	55.60%
HHB	4043	1,938	80	5.8	23.10%	24.90%
HHB	4050	2,695	112	10.6	42.20%	60.20%
HHB	5036	1,208	50	12.5	50.20%	54.10%
HHB	5037	1,967	80	11.1	44.40%	35.40%
HHB	5045	2,730	112	4	16.00%	13.80%
MSC	102	1,170	48	18.5	74.00%	43.60%
MSC	104	1,117	48	17.1	68.40%	43.10%
MSC	120	1,560	72	12.6	50.20%	30.40%
MSC	124	1,839	84	5.6	22.20%	58.20%
MSC	130	624	42	11.1	44.40%	57.70%
MSC	164	1,129	70	16	64.00%	70.00%
MSC	168	1,129	70	16.1	64.40%	71.90%
MSC	172	1,129	70	15.1	60.40%	76.80%
MSC	185	828	50	15.1	60.40%	68.80%
MSC	187	542	36	14.2	56.80%	31.00%
MSC	364	422	26	13	52.00%	21.60%
MSC	372	961	50	11.1	44.40%	47.10%
MSC	376	613	28	11.6	46.20%	52.50%
MSC	378	613	30	9	36.00%	34.10%

Building	Room Number	Square Feet	Number of Seats	WRH	WRH% of Available Hours	Station Occupancy %
MSC	384	653	44	13.1	52.30%	66.40%
MSC	386	606	40	10.6	42.40%	64.80%
MSC	388	605	30	10.6	42.60%	44.40%
MSC	93	574	35	8	32.00%	60.00%
NFH	156	1,757	157	9.7	38.80%	47.90%
ODH	202A	1,344	83	6.6	26.40%	43.50%
ODH	202B	1,848	111	7.1	28.40%	28.40%
ODH	202C	1,394	83	5.4	21.80%	61.40%
PH	302	1,660	72	8.1	32.40%	31.90%
PH	306	910	48	11.7	46.60%	36.50%
PH	307	938	49	15.2	60.80%	22.50%
PH	308	910	48	11.2	44.60%	51.60%
PH	309	930	49	10.1	40.60%	57.30%
PH	310	732	36	10.6	42.60%	29.60%
PH	312	738	36	13.4	53.50%	43.30%
PH	314	916	48	10.6	42.60%	31.30%
PH	316	918	48	10.1	40.60%	43.40%
PH	318	910	48	11.7	46.60%	52.60%
PH	320	735	36	14.2	56.80%	81.10%

Building	Room Number	Square Feet	Number of Seats	WRH	WRH% of Available Hours	Station Occupancy %
SFH	163	985	65	8	32.00%	63.10%
SFH	164	667	30	12	48.00%	46.70%
SFH	165	992	63	12.1	48.40%	70.90%
SFH	166	667	30	9.1	36.40%	52.00%
SFH	167	667	48	10.6	42.60%	24.30%
SFH	168	667	30	12.7	50.60%	39.20%
SFH	169	667	40	13.7	54.80%	38.50%
SFH	170	667	48	9.1	36.40%	46.70%
SFH	171	667	30	11.1	44.40%	77.50%
SFH	172	667	48	15.2	60.80%	42.30%
SFH	173	667	48	12	48.10%	36.10%
SFH	174	667	48	10.1	40.60%	48.50%
SFH	176	732	48	11.2	44.60%	38.60%
SFH	263	991	65	8	32.00%	53.10%
SFH	265	446	25	7.1	28.20%	34.40%
SFH	266	688	48	8.1	32.40%	38.10%
SFH	268	668	48	11.7	46.60%	56.20%
SFH	269	688	48	8.1	32.40%	42.80%
SFH	270	688	48	12.1	48.40%	26.40%
SFH	271	668	48	11.7	46.60%	39.90%
SFH	272	668	48	9.6	38.20%	44.60%
SFH	273	668	48	12.1	48.40%	40.80%

Building	Room Number	Square Feet	Number of Seats	WRH	WRH% of Available Hours	Station Occupancy %
SFH	274	668	48	12.6	50.40%	41.60%
SFH	276	733	48	11.4	45.70%	56.30%
SFH	363	896	70	8	32.00%	55.00%
SFH	364	668	48	11	43.90%	49.10%
SFH	365	992	75	15.7	62.80%	53.90%
SFH	366	668	36	7.1	28.40%	70.80%
SFH	367	668	48	12.1	48.40%	38.40%
SFH	368	668	48	10.1	40.60%	59.40%
SFH	369	668	48	8.6	34.20%	56.70%
SFH	370	688	48	8.1	32.40%	33.10%
SFH	371	668	38	13.2	52.80%	67.90%
SFH	372	668	48	11.1	44.60%	73.00%
SFH	373	668	48	3.5	14.20%	31.30%
SFH	374	668	48	11.6	46.20%	56.30%
SFH	376	732	50	13.7	54.80%	45.10%
VAR	205	1,151	85	13.2	52.80%	36.80%
VAR	206	1,184	85	10.1	40.60%	33.50%
VAR	479	998	30	14.2	56.80%	62.50%
WH	102	870	60	7.1	28.40%	76.70%
WH	105	856	60	7.6	30.20%	33.90%

Building	Room Number	Square Feet	Number of Seats	WRH	WRH% of Available Hours	Station Occupancy %
WH	124	1,062	85	4.6	18.20%	33.00%
WH	301	306	16	14.2	56.80%	60.90%
WH	313	500	30	8.6	34.20%	62.00%
WH	416	372	15	1	4.00%	86.70%
Totals	123	125,759	7,194	1,326		
Averages		1,022	58	10.8	43.10%	50.50%



Wilson Hall

Report 12: Saturday Utilization - Winter 2018

- Saturday Utilization 8 a.m. to 5 p.m.
- 9 Available Hours per Week
- 12 rooms had a class meeting at least one week during the term. The following table lists these rooms, number of Saturdays scheduled, and the average hours used when the room was scheduled.

Building	Room	Square Feet	Seats	# of Saturdays Scheduled During Term	Avg WRH	WRH% of Available Hours	Station Occupancy %
EH	206	523	30	4	6.2	69%	37%
EH	208	686	40	4	6.2	69%	0%
EH	210	683	40	17	3.5	39%	28%
EH	214	902	48	17	3.5	39%	77%
EH	235	1,021	40	8	8.5	94%	40%
EH	239	1,018	40	1	3	34%	93%
HH	113	921	24	17	3.7	41%	21%
PH	310	732	36	17	3.5	39%	44%
PH	312	738	36	4	6.6	73%	28%
PH	320	735	36	3	6.2	69%	28%
SFH	166	667	30	17	7.2	80%	55%
Totals/ Averages	11	8,626	400	109	5.3	59%	33%



Facility Condition Assessment

Plant Renewal, Deferred Plant Renewal & Plant Adaptation Backlog

The Facilities management computerized Capital Asset Management (CAM) program is a relational database management system, containing over 1,500 projects; totaling over \$223 million. In addition to this summary report, the database is capable of producing ad-hoc reports by priority rank, building system, completed and In-process projects in the current fiscal year, and backlog category.

The objective with this document, in addition to identifying our needs, is to raise awareness of the deferred plant renewal liability, and to serve broader facilities planning as well as to set priorities. These facility condition assessments identified needs, preliminary work scope, determined preliminary costs, and prioritized facility projects for the University.

Oakland University completed facility condition assessments in 2006 for 34 campus buildings and updates the assessments of four buildings each year.

Executive Summary of 2018 & 2019 Year Projects (Figures provided in millions)						
System Code	Projects Category	2017 Projects Total	Completed Projects	In-Process Projects	New Projects added	2018 Projects Backlog
AC	Accessibility	\$5.09	\$0.03	\$-	\$(0.03)	\$5.04
CN	Controls	\$5.20	\$0.08	\$0.10	\$0.32	\$5.34
EL	Electrical	\$20.45	\$1.08	\$0.08	\$0.05	\$19.34
EN	Energy	\$4.56	\$1.28	\$-	\$1.41	\$4.68
ES	Exterior System	\$14.72	\$21.65	\$0.11	\$21.96	\$14.93
FS	Fire/Life Safety	\$18.06	\$0.02	\$0.03	\$(0.16)	\$17.86
HE	Health	\$0.96	\$-	\$-	\$(0.04)	\$0.92
HT	High Temp/Hot Water	\$10.40	\$1.20	\$1.01	\$8.85	\$17.05
HV	HVAC	\$38.78	\$1.78	\$0.16	\$(1.06)	\$35.79
IS	Interior System	\$36.61	\$4.11	\$1.98	\$7.59	\$38.11
IT	Information Technology	\$21.03	\$-	\$0.71	\$1.39	\$21.71
PL	Plumbing	\$8.62	\$-	\$0.09	\$(0.38)	\$8.15
RF	Roofing	\$4.62	\$-	\$-	\$0.45	\$5.07
RW	Roads/Walks/ Parking Lots	\$1.74	\$1.23	\$-	\$1.44	\$1.95
SI	Site	\$1.06	\$0.92	\$0.42	\$2.83	\$2.55
SS	Security Systems	\$1.39	\$-	\$0.12	\$0.16	\$1.44
SW	Storm Water	\$18.82	\$0.10	\$-	\$0.71	\$19.43
VT	Elevator	\$3.83	\$0.06	\$-	\$0.12	\$3.89
	Total	\$215.97	\$33.53	\$4.81	\$45.62	\$223.25
NET CHANGE FROM PREVIOUS YEAR						\$7.38

Remarks: Facility Management continually checks the validity of projects in the database and eliminates those assessed as not viable.

* Elimination of non-viable projects under that category

DEFINITIONS

Capital Asset Management is a systematic approach to renewing the University's capital assets through planned:

Plant Renewal

Deferred Plant Renewal

Plant Adaptation

These terms have been formally defined by the National Association of College and University Business Officers (NACUBO) as follows:

Plant Renewal

“...a systematic approach to planning and budgeting for known future cyclical renewal and replacement requirements that extend the (present) life and retain the usable condition of campus facilities and (building) systems ... not normally contained in the annual operating budget. ...” (NACUBO).

Cyclical renewals typically exceed five year cycles and include such items as roof replacement, electrical switchgear, and HVAC system replacement. These expenditures keep the physical plant and related infrastructure in reliable operating condition for its present use.

Deferred Plant Renewal

“... encompasses measures that are not carried out because of underfunding in the budgeting process or perceived low priority...” (NACUBO).

This includes actual projects, from the prior or current years, not included in the routine maintenance work. These projects represent “Postponed Work” that was deferred because total costs exceed current budget, or projects

that are of a “low priority” that present a minimal return on investment. Also included in the Deferred Plant Renewal project list are those projects that were shifted because funds were re-allocated to address emergencies that have no other funding source.

Plant Adaptation

“...improvements are driven by institutional program changes ...” (NACUBO).

This involves a programmatic process to plan and fund for projects that will be required due to an evolving use of the institution (e.g., changes in academic disciplines, shifting expectations, supporting institutional mission, etc.), or changing standards (e.g., campus master plans, architectural standards, etc.). These expenditures are over and above normal maintenance, and are not typically contained in the annual operating budget.

FACILITY CONDITION ASSESSMENT RANKING

PRIORITY 1

Current Critical (immediate or current year)

Projects in this category require immediate action to:

- Return a facility to normal operation
- Stop accelerated deterioration
- Correct a cited safety hazard
- Any other funded projects requiring immediate action or construction

PRIORITY 2

Potentially Critical (within one year)

Projects in this category, if not corrected expeditiously, will become critical within a year.

Situations in this category include:

- Intermittent interruptions
- Rapid deterioration
- Potential safety hazard

PRIORITY 3

Necessary – Not Yet Critical (within years two – five)

Projects in this category include conditions requiring prompt attention to preclude predictable

deterioration or potential down time and associated higher costs if deferred further.

PRIORITY 4

Recommended (within years six – ten)

Projects in this category include items that represent a sensible improvement to existing conditions. These are not required for the most basic function of a facility; however, Priority 4 projects will either improve overall usability and/or reduce long-term maintenance.

PRIORITY 5

Recommended (beyond year ten)

Projects in this category may not improve overall usability and/or reduce long-term maintenance; however, they provide an economic payback that would not otherwise be present. Projects in this category may represent to upgrade buildings with current codes during major renovation projects. They may also represent non-time based improvement, upgrade, or recommendation.

SOURCE: Association of Higher Education Facilities Officers (APPA)

ABBREVIATIONS

CAMPUS SYSTEM

Accessibility (AC)
Controls (CN)
Electrical (EL)
Energy Management (EN)
Exterior Structure (ES)
Fire/Life Safety (FS)
Health (HE)
High Temperature / Heat Water (HT)
HVAC (HV)
Information Technology (IT)
Interior / Finish System (IS)
Plumbing (PL)
Roofing (RF)
Roads, Walks, Parking Lots (RW)

	Site (SI)
	Vertical Transportation (VT)
	Security Systems (SS)
	Storm Water (SW)
<u>CATEGORY</u>	Plant Renewal (PR)
	Deferred Plant Renewal (DPR)
	Plant Adaptation (PA)

FACILITIES CONDITION NEEDS INDEX (FCNI)

Facility Condition Needs Index provides a relative measure for comparing one building (or group of buildings) to another. The index is a simple calculation, derived by dividing the total project costs (for the ten-year window) by the total facility replacement cost (FRC). When applying the index as an evaluation tool, the lower the number, the better the facility condition. It should also be noted that this is an index, not a percentage. It can (and often does in the case of historic facilities) exceed 1.00.

Individual Building FCNI Range		Condition Description
0.01 – 0.05		Excellent condition, typically new construction
0.06 – 0.15		Good condition, renovations occur on schedule
0.16 – 0.30		Fair condition, in need of normal renovation
0.31 – 0.40		Below average condition, major renovation required
0.41 – 0.59		Poor condition, gut / renovation indicated
0.60 and above		Complete facility replacement indicated

FACILITIES REPLACEMENT COST (FRC)

Facilities Replacement Cost is reported as the total replacement cost for the building or structure and its contents or fixed assets. As an example, the FRC for student housing includes the replacement cost for the building and all the fixtures within each room. Likewise, the FRC for a central heating plant would include the cost of the structure and the boilers, generators and other equipment contained within.

Executive Summary

All Campus Buildings – Facility Condition Assessment

No.	Bldg. Code	Building Name	Use	Year Built	Square Feet	Facility Replacement Cost	Project Costs	FCNI Total	Benchmark Per APPA
1	AD	Athletic Dome	AUX	2014	110,800	\$5,706,544	\$241,546	0.04	Excellent
2	ANI	Anibal House	HS	1962	20,487	\$4,547,716	\$1,612,772	0.35	Below Average
3	AVN	Ann V. Nicholson Apartments	HS	1998	181,291	\$25,467,455	\$593,700	0.02	Excellent
4	BB	Belgian Barn	AUX	1935	9,324	\$826,273	\$251,880	0.30	Fair Condition
5	BGM	Building Grounds and Maintenance Bldg.	UNIV	1994	14,400	\$1,591,785	\$630,142	0.40	Poor Condition
6	BRS	Biomedical Research Support Facility	UNIV	1999	28,277	\$5,884,997	\$907,094	0.15	Good Condition
7	CAS	College of Arts & Science Annex	AD	1987	4,084	\$339,215	\$221,910	0.65	Complete Replacement
8	CCC	Chicken Coop Center *	AUX	1930	8,404	\$839,513	\$127,449	0.15	Good Condition
9	CHP	Central Heating Plant	UNIV	1974	16,833	\$27,709,696	\$2,536,531	0.09	Good Condition
10	DH	Dodge Hall	AD	1968	151,204	\$51,428,241	\$17,255,448	0.34	Below Average
11	EC	Engineering Center	AD	2014	134,286	\$71,496,539	\$11	0.00	Excellent
12	ECMB	East Campus & Misc. Buildings	AUX	N/A	86,664	\$24,498,599	\$4,049,480	0.17	Fair Condition
13	EH	Elliott Hall	AD	2000	74,582	\$18,285,027	\$2,966,472	0.16	Fair Condition
14	ET	Elliott Tower	UNIV	2014	950	\$7,418,508	\$11	0.00	Excellent
15	FM	Facilities Management	UNIV	2014	7,800	\$1,997,291	\$159,924	0.08	Good Condition
16	FTZ	Fitzgerald House	HS	1961	20,610	\$4,575,019	\$1,507,230	0.33	Below Average
17	GAT	Gatehouse at MBH	UNIV	1929	2,032	\$1,069,026	\$433,217	0.41	Below Average
18	GHC	Graham Health Center	UNIV	1970	13,161	\$2,517,965	\$946,772	0.38	Below Average

No.	Bldg. Code	Building Name	Use	Year Built	Square Feet	Facility Replacement Cost	Project Costs	FCNI Total	Benchmark Per APPA
19	GLC	Golf & Learning Center	AUX	1914	6,038	\$1,242,434	\$2,222,711	1.79	Complete Replacement
20	GLF	Golf Courses	AUX	N/A	0	\$27,435,885	\$9,815,605	0.36	Below Average
21	GP	Golf Pavilion	AUX	2014	5,450	\$1,483,702	\$11	0.00	Excellent
22	GRN	Greenhouse *	UNIV	1917	3,630	\$746,942	\$1,149,406	1.54	Complete Replacement
23	GTM	George T. Matthews Apartments	HS	1982	47,464	\$8,677,233	\$2,603,610	0.30	Fair Condition
24	HAM	Hamlin Hall	HS	1968	143,872	\$39,834,331	\$7,074,617	0.18	Fair Condition
25	HCH	Hillcrest Hall	HS	2018	291,488	\$80,511,600	\$117	0.00	Excellent
26	HH	Hannah Hall	AD	1961	89,418	\$40,247,968	\$14,967,549	0.37	Below Average
27	HHB	Human Health Building	AD	2012	172,825	\$68,327,399	\$31,481	0.00	Excellent
28	HIL	Hill House	HS	1964	42,522	\$11,773,212	\$6,767,849	0.57	Complete Replacement
29	JDH	John Dodge House	AD	1880	10,696	\$2,213,102	\$666,132	0.30	Fair Condition
30	KL	Kresge Library	AD	1961	164,522	\$33,341,656	\$5,424,318	0.16	Fair Condition
31	MBH	Meadow Brook Hall	AUX	1929	78,002	\$54,871,771	\$10,810,819	0.20	Fair Condition
32	MC	Main Campus	UNIV	N/A	0	\$120,130,000	\$31,122,400	0.26	Fair Condition
33	MCMB	Main Campus Misc.	AUX	1960	25,978	\$5,056,159	\$230,179	0.05	Excellent
34	MSC	Mathematics & Science Center	AD	1997	165,494	\$64,056,168	\$6,699,750	0.10	Good Condition
35	NFH	North Foundation Hall	AD	1959	67,691	\$25,334,636	\$6,772,322	0.27	Fair Condition
36	OC	Oakland Center	AUX	1959	146,693	\$29,220,454	\$6,087,351	0.21	Fair Condition
37	ODH	O'Dowd Hall	AD	1982	105,000	\$45,599,542	\$8,874,763	0.19	Fair Condition
38	OIT	O'Dowd Hall IT Network Building	UNIV	2011	822	\$2,484,312	\$11	0.00	Excellent

No.	Bldg. Code	Building Name	Use	Year Built	Square Feet	Facility Replacement Cost	Project Costs	FCNI Total	Benchmark Per APPA	
39	OUI	O.U. INCubator Office	UNIV	1983	11,385	\$2,210,450	\$493,608	0.22	Fair Condition	
40	OVH	Oak View Hall	HS	2014	164,724	\$34,182,201	\$11	0.00	Excellent	
41	P32	Parking Structure	UNIV	2014	381,782	\$23,120,818	\$11	0.00	Excellent	
42	PH	Pawley Hall	AD	2002	132,406	\$35,571,435	\$4,198,887	0.12	Good Condition	
43	PRY	Pryale Hall	AD	1963	20,829	\$4,722,974	\$2,125,160	0.45	Poor Condition	
44	PS1	Parking Structure	UNIV	2002	179,820	\$12,546,430	\$83,206	0.01	Excellent	
45	PSS	Police and Support Services	UNIV	1976	26,444	\$5,176,614	\$1,099,218	0.21	Fair Condition	
46	RAC	Student Recreation and Athletic Center	UNIV	1998	253,494	\$51,731,767	\$3,423,451	0.07	Good Condition	
47	SFH	South Foundation Hall	AD	1959	55,041	\$12,480,542	\$4,889,124	0.39	Below Average	
48	SGP	O.U. INC. Shotwell Gustafson Pavilion *	AUX	1929	25,850	\$5,319,132	\$1,118,460	0.21	Fair Condition	
49	SS	Spenser Substation	UNIV	2003	14,769	\$3,039,004	\$96,111	0.03	Excellent	
50	SSC	Steve Sharf Clubhouse	AUX	2011	9,900	\$4,204,589	\$125,852	0.03	Excellent	
51	SST	Sunset Terrace *	UNIV	1952	12,587	\$3,121,673	\$552,420	0.18	Fair Condition	
52	UF	Upper Fields Support Building	AUX	2014	2,467	\$519,310	\$11	0.00	Excellent	
53	VAR	Varner Hall	AD	1970	119,939	\$42,493,996	\$15,290,875	0.36	Below Average	
54	VBH	Vandenberg Hall	HS	1967	178,321	\$49,372,344	\$7,982,416	0.16	Fair Condition	
55	VWH	Van Wagner House	HS	1965	43,305	\$11,990,003	\$6,951,690	0.58	Poor Condition	
56	WH	Wilson Hall and Meadow Brook Theatre	AD	1967	98,153	\$38,313,626	\$19,053,164	0.50	Poor Condition	
Grand Totals:						4,184,010	\$1,258,904,821	\$223,246,263	0.18	Fair Condition

NOTE: FRC exclude furnishing and furniture cost.

Total Cost Per Square Foot for all Campus Physical Assets	\$297.53
--	----------

Total Cost Per Square Foot for all Campus Projects	\$55.48
---	---------

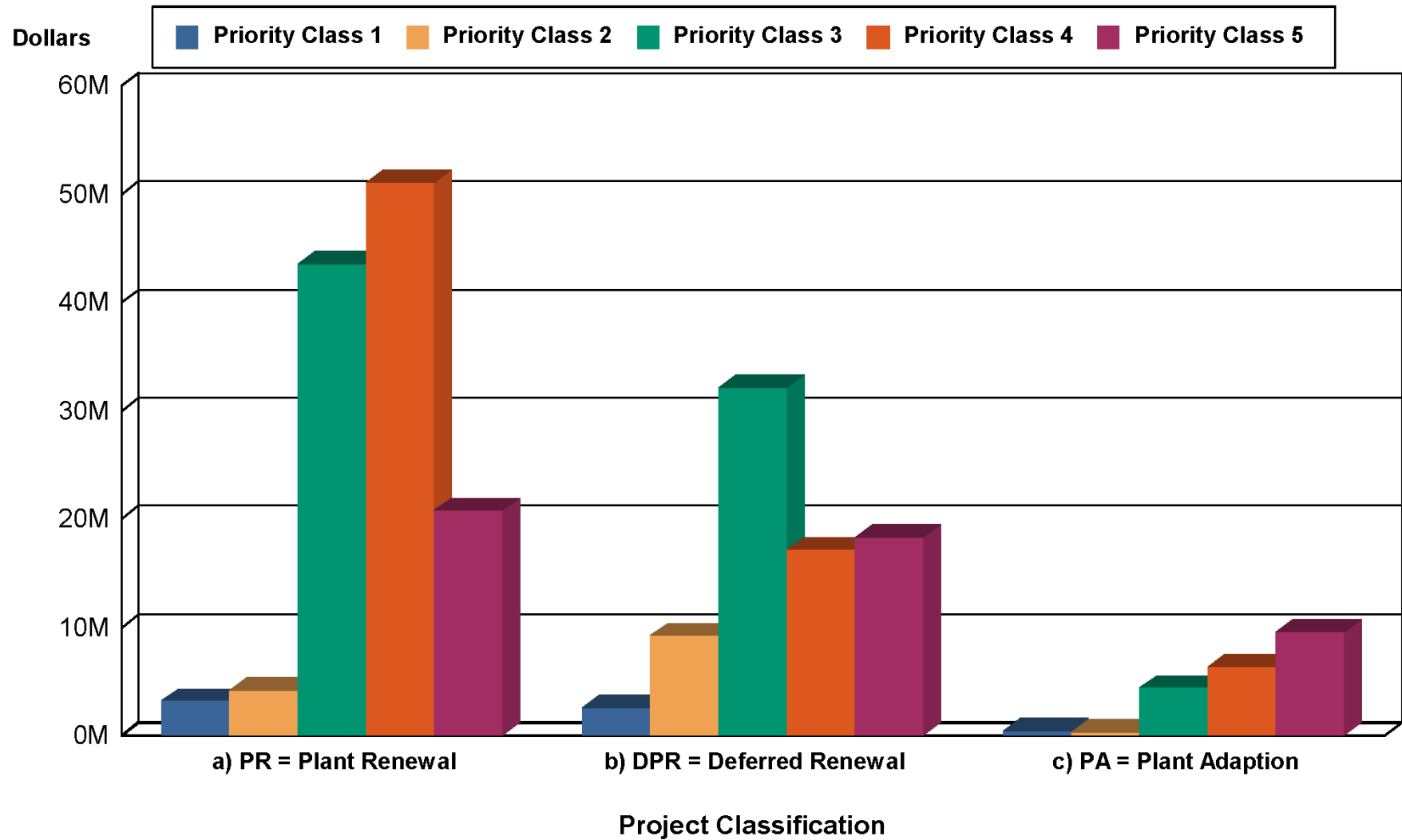
Individual Building FCNI Range	Condition Description
0.01 – 0.05	Excellent condition, typically new construction
0.06 – 0.15	Good condition, renovations occur on schedule
0.16 – 0.30	Fair condition, in need of normal renovation
0.31 – 0.40	Below average condition, major renovation required
0.41 – 0.59	Poor condition, gut/renovation indicated
0.60 and above	Complete facility replacement indicate

Detailed Project Summary Facility Condition Analysis Project Class By Priority Class						
Project Class	Priority Class					Subtotal
	1	2	3	4	5	
a) PR = Plant Renewal	\$3,189,202	\$4,198,833	\$43,505,994	\$51,027,658	\$20,789,822	\$122,711,509
b) DPR = Deferred Renewal	\$2,596,699	\$9,249,847	\$32,115,116	\$17,154,968	\$18,295,247	\$79,411,878
c) PA = Plant Adaption	\$472,927	\$305,734	\$4,391,217	\$6,356,123	\$9,596,875	\$21,122,876
TOTALS	\$6,258,830	\$13,754,414	\$80,012,327	\$74,538,749	\$48,681,944	\$223,246,264

FACILITY CONDITION ASSESSMENT

Project Class by Priority Class

All Buildings



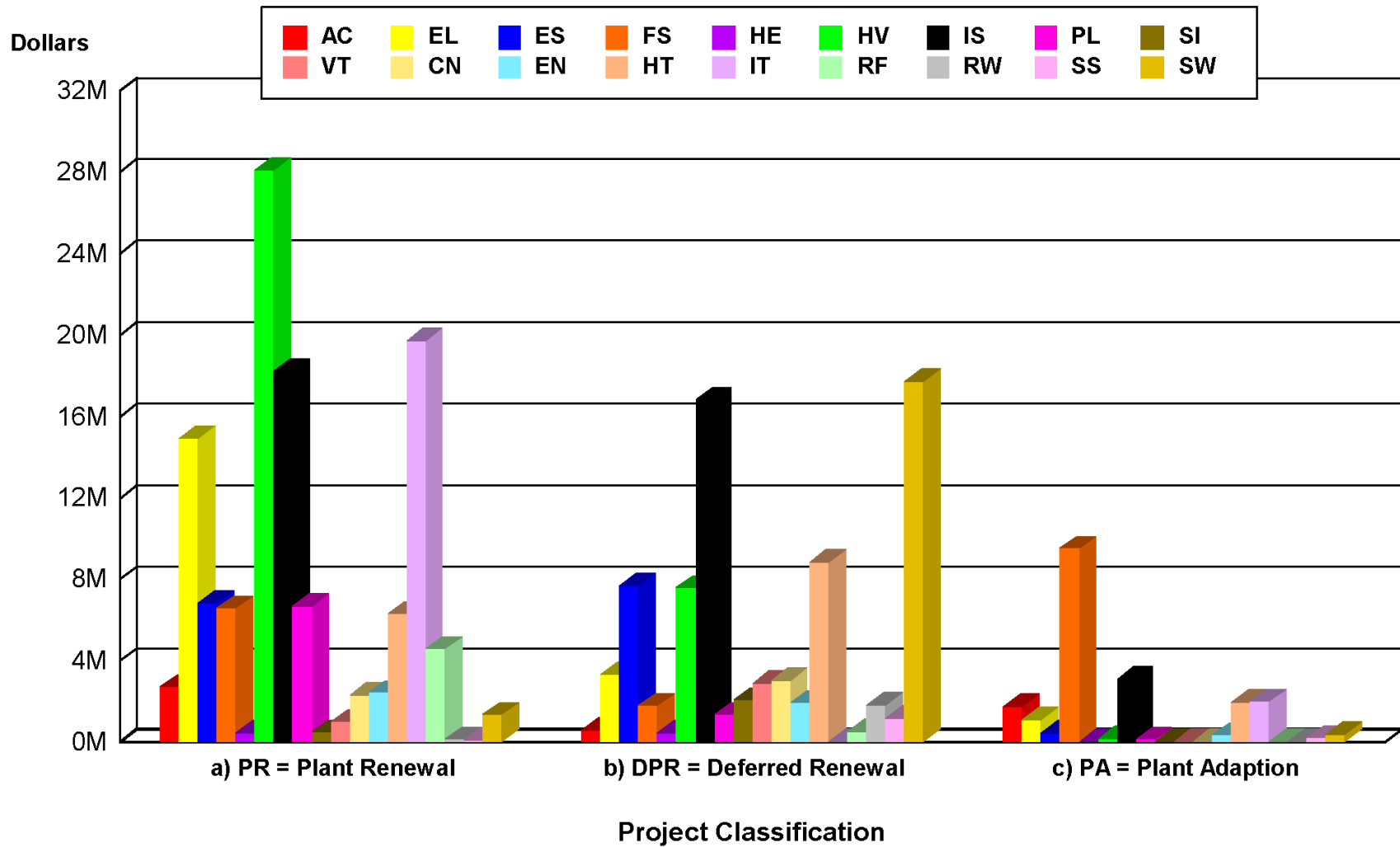
Detailed Project Totals
Facility Condition Assessment
System Code by Project Class – All Buildings

System Code	System Description	Project Classes			Subtotal	%
		PR= Plant Renewal	DPR = Deferred Renewal	PA = Plant Adaption		
AC	ACCESSIBILITY	2,705,170	572,677	1,760,131	\$5,037,978	2.26%
CN	CONTROLS	2,291,826	3,009,292	34,036	\$5,335,154	2.39%
EL	ELECTRICAL	14,937,377	3,294,498	1,112,286	\$19,344,161	8.66%
EN	ENERGY	2,411,616	1,922,527	350,524	\$4,684,667	2.10%
ES	EXTERIOR	6,808,595	7,661,521	460,599	\$14,930,714	6.69%
FS	FIRE/LIFE SAFETY	6,569,917	1,767,404	9,518,927	\$17,856,248	8.00%
HE	HEALTH	454,301	451,518	11,272	\$917,091	0.41%
HT	HIGH TEMP/HEAT WATER	6,296,014	8,805,424	1,948,038	\$17,049,475	7.64%
HV	HVAC	28,068,578	7,566,388	152,888	\$35,787,854	16.03%
IS	INTERIOR/FINISH SYS.	18,197,731	16,819,919	3,092,771	\$38,110,422	17.07%
IT	INFORMATION TECHNOLOGY	19,692,561	24,880	1,988,407	\$21,705,849	9.72%
PL	PLUMBING	6,686,933	1,345,016	120,131	\$8,152,080	3.65%
RF	ROOFING	4,566,926	504,799	0	\$5,071,725	2.27%
RW	ROAD/WALKS/ PARKING LOT	131,701	1,820,898	0	\$1,952,599	0.87%
SI	SITE	485,143	2,065,943	0	\$2,551,086	1.14%
SS	SECURITY SYSTEMS	85,598	1,160,182	190,830	\$1,436,610	0.64%
SW	STORM WATER	1,334,355	17,720,593	374,903	\$19,429,852	8.70%
VT	VERT. TRANSPORTATION	987,166	2,898,398	7,133	\$3,892,697	1.74%
TOTALS		\$122,711,509	\$79,411,878	\$21,122,876	\$223,246,263	100.00%

FACILITY CONDITION ASSESSMENT

System Code by Project Class

All Buildings



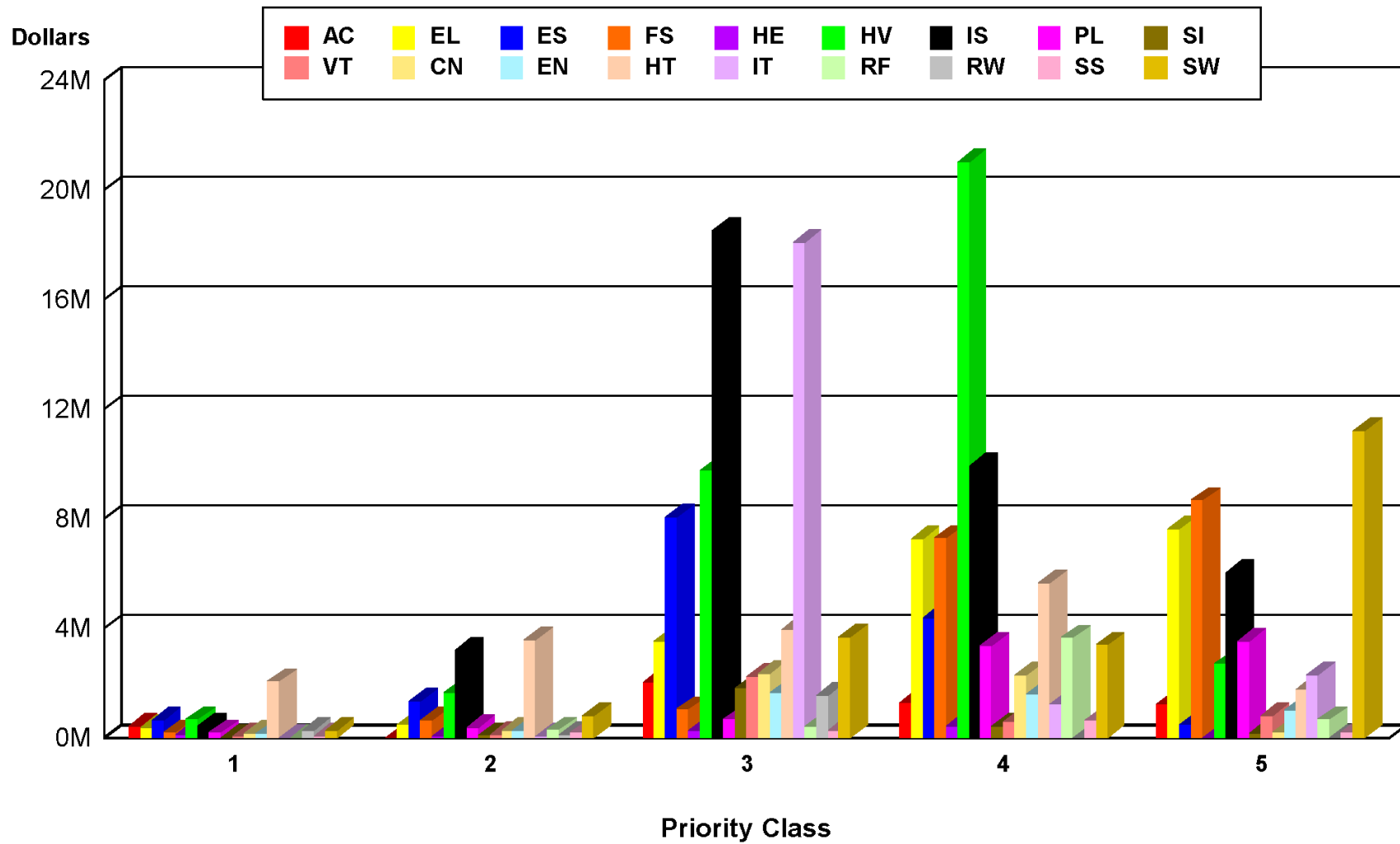
**Detailed Project Totals
Facility Condition Assessment
System Code by Priority Class
All Buildings**

System Code	System Description	Priority Classes					Subtotal
		1	2	3	4	5	
		FY 2018	FY 2019	FY 2020-23	FY 2024-27	FY 2028+	
AC	ACCESSIBILITY	434,612	31,005	2,051,689	1,292,595	1,228,077	5,037,978
CN	CONTROLS	185,539	276,045	2,375,552	2,303,089	194,928	5,335,154
EL	ELECTRICAL	377,388	498,032	3,539,642	7,278,377	7,650,723	19,344,161
EN	ENERGY	139,525	277,484	1,645,571	1,617,679	1,004,410	4,684,667
ES	EXTERIOR	635,911	1,343,160	8,061,909	4,402,664	487,070	14,930,714
FS	FIRE/LIFE SAFETY	204,485	645,487	1,048,585	7,282,711	8,674,980	17,856,248
HE	HEALTH	105,449	86,392	274,931	439,047	11,272	917,091
HT	HIGH TEMP/HEAT WATER	2,072,038	3,588,567	3,960,066	5,651,411	1,777,393	17,049,475
HV	HVAC	685,343	1,642,064	9,757,642	21,000,585	2,702,219	35,787,854
IS	INTERIOR/FINISH SYS.	448,859	3,198,616	18,496,233	9,942,794	6,023,919	38,110,422
IT	INFORMATION TECHNOLOGY	5,786	79,403	18,093,488	1,229,887	2,297,285	21,705,849
PL	PLUMBING	199,245	396,953	681,444	3,354,527	3,519,911	8,152,080
RF	ROOFING	27,055	304,838	407,142	3,659,319	673,370	5,071,725
RW	ROAD/WALKS/ PARKING LOT	286,513	114,287	1,551,799	0	0	1,952,599
SI	SITE	15,304	101,073	1,820,691	443,446	170,572	2,551,086
SS	SECURITY SYSTEMS	85,598	203,027	287,414	632,688	227,883	1,436,610
SW	STORM WATER	289,305	828,759	3,709,052	3,394,834	11,207,902	19,429,852
VT	VERT. TRANSPORTATION	60,873	139,222	2,249,477	613,096	830,029	3,892,697
TOTALS		\$6,258,829	\$13,754,414	\$80,012,327	\$74,538,749	\$48,681,944	\$223,246,263

FACILITY CONDITION ASSESSMENT

System Code by Priority Class

All Buildings



Implementation Plan

State Funding Request

In the future, as additional state projects are considered, Oakland University has need for the following based on program growth, opportunity and State needs:

South Foundation Hall Classroom Building Renovation & Expansion for STEM Core Courses

Oakland University's Capital Outlay Project proposal for 2020 is the transformation of South Foundation Hall (SFH), from our original general classroom building into a modern building featuring the latest technology equipped teaching and learning classrooms and collaboration spaces, targeted for our growing Science, Technology, Engineering, and Math (STEM) and human health curriculum. South Foundation Hall, constructed in 1959, is one of the oldest building on campus, already overpassed the service life of the building systems and does not support modern styles of teaching and learning. As reflected in its name, this building has provided a destination for our students to acquire the "foundation" for their professional curriculum. This facility continues to house the core course work, which is foundation for our degrees that are in the highest demand, such as Engineering, Nursing and business.

University Funded Priorities

Wilson Hall Expansion (funded)

Wilson Hall currently houses administration, a small number of classrooms, and the Meadow Brook Theatre. The need for additional administration and faculty offices is great, as is the need to consolidate student service functions. This expansion will address these issues and will provide an enhanced environment for students and staff.

Elliott School of Business Administration Expansion and Renovation

The expansion and renovation of the School of Business Administration Building will double the square footage of the current facility (Elliott Hall). Funded through design only.

Undergraduate Student Housing (funded)

The Southern Campus Housing Project construction is complete and opened for occupancy in the Fall 2018 semester. The project consists of 750 additional beds, a new dining facility and classrooms to support the growing demand for on campus student housing. Expanding housing is in keeping with the campus master plan goal of over 4,000 residential students.

Oakland Center Expansion (funded)

Expansion of the Oakland Center to accommodate additional dining facilities, student study areas, conference rooms, and other needed upgrades is complete and reopened for the Fall 2018 semester.

Galloway Creek Ecosystem Restoration Project (externally funded)

Improvements to the regional drainage system, which traverses the campus.



Future Projects Under Consideration

Our Comprehensive Campus Master Plan has identified short, midterm and long range opportunities for internal initiatives as well as external development opportunities. These include additional student housing, classroom and administrative facilities, athletics and recreation facilities, and performing arts center, among others. An update to the plan is underway and will consider development opportunities to campus edge districts. It will also address in greater detail the Meadow Brook Estate, its historic assets, and their important relationship to the main campus.

Plant Renewal / Deferred Plant Renewal

As previously noted, Plant Renewal and Deferred Plant Renewal projects total \$202 million of the \$223 million Facility Condition Analysis. The current average annual investment is approximately \$1.6 million from General Fund budgets and maintenance endowments; approximately \$3.5 million from Auxiliaries Maintenance Reserves; and \$0.9 million from University Technology Services budgets.

