

# Annual Security & Fire Safety Report

January 1, 2023 - December 31, 2023  
Statistical Information for 2021, 2022, 2023



Oakland University  
Police Department





# Table of Contents

## Part One - Clery Act Annual Campus Safety and Security Report

Board Policy on the Campus Safety and Security Statement .....	4
Geography .....	5
Campus Police.....	5
Alcohol, Drugs, and Firearms .....	6
Reporting of Crimes and Emergency Situations - Main Campus.....	6
Reporting of Crimes and Emergency Situations - Other Campus Locations.....	8
Facilities Management.....	8
Rape, Acquaintance Rape, Domestic Violence, Dating Violence, Sexual Assault and Stalking .....	9
Michigan Public Sex Offender Registry .....	27
Adam Walsh Child Protection Act.....	27
Timely Warnings, Emergency Notifications and Emergency Procedures/Evacuations .....	28
Emergency Preparedness, Response, Evacuation, and Testing Procedures.....	32
Signing up for Emergency Alerts.....	32
Missing Students - Notification Policies and Procedures .....	34
Missing Residential Students Specifically - Notification Policies and Procedures.....	34
Center for Multicultural Initiatives.....	35
Responsibilities of Students and Employees.....	35
Off-Campus Organizations.....	35
Disclosure of Crime Statistics .....	36
Non-Campus Academic Sites .....	37

## Part 2 - Annual Campus Fire Safety Report

Fire Reporting .....	41
On Campus Student Housing Facility Fire Safety System .....	42
Fire Drills.....	43
Portable Electric Appliances, Smoking, and Open Flames in a Student Housing Facility .....	44
Procedures for Evacuation in the Case of Fire .....	44
Fire Safety Education and Training Programs .....	44
Fire Statistics.....	45
Fire Log .....	45
Future Improvements.....	46

# Part One - Clery Act Annual Security and Fire Safety Report

This Annual Security and Fire Safety Report (“Safety and Security Report”) is being published in accordance with the requirements of the Jeanne Clery Disclosure of Campus Security Policy and Campus Crime Statistics Act and its implementing regulations (collectively, the “Clery Act”). The purpose of this Security and Fire Safety Report is to provide faculty, staff, students and campus visitors (collectively, the “campus community”) with an overview of Oakland University’s security resources, policies and procedures. The policies and procedures described in this Annual Security & Fire Safety Report are subject to change at any time and updated versions of the Annual Security & Fire Safety Report, if any, will be posted at <https://oakland.edu/police/campus-safety/clery-act-and-title-ix/>.<sup>1</sup>



This Annual Security & Fire Safety Report is posted on the Oakland University Police Department (OUPD) website and through a direct link to the appropriate website. Paper copies are also available at the OUPD, the Dean of Students’ Office, or University Human Resources for all current or prospective faculty, staff, students and/or other members of the campus community.

## Board Policy on the Campus Safety and Security Statement

In compliance with the Act, the Oakland University Board of Trustees has enacted the following policy:

1. Oakland University (“University”) shall comply with the applicable requirements of Public Law 101-542, known as the Crime Awareness and Campus Security Act of 1990.
2. The Oakland University Police Department (“OUPD”) shall collect information with respect to campus crime statistics and campus security policies, as required by the Act. The OUPD shall prepare, publish and distribute an Annual Security and Fire Safety report containing information on campus crime statistics and campus security policies, as required by the Act. The OUPD shall include in the annual report all policies and procedures which address the prevention of sexual assaults and racial violence on the campus.
3. The University shall make timely reports to the campus community on crimes considered to be a threat to members of the campus community as required by the Act, that are reported to campus authorities.
4. Upon request of the Secretary of Education, the University shall submit to the Secretary a copy of the crime statistics which the Act requires the institution to collect and distribute in the annual report.
5. The OUPD, in conjunction with the Office of the Dean of Students, is authorized and directed to establish and enforce reasonable and appropriate written rules and procedures to implement this policy and any other requirements of the Act.



---

<sup>1</sup> This document contains links. If the link does not work when you click on it copy the link and paste into a browser.

## Geography

The policies and procedures described in this Annual Security and Fire Safety Report generally apply to the University's main campus ("Main Campus") in Rochester, Michigan and Macomb University Center in Clinton Township, Michigan. Maps for each existing location are attached in the appendix.

Policies and procedures that are unique to any one of these locations are clearly identified in this Annual Security & Fire Safety Report.

In addition, the crime statistics for the Main Campus and Macomb University Center are reported separately for each location. Statistics for non-campus buildings or property are also reported separately.

## Campus Police

The OUPD is the lead law enforcement department with respect to the University's campus safety and security and its jurisdiction covers all of Oakland University's Main Campus, as well as Squirrel Road to the West, Walton Boulevard to the North, Adams Road to the East and Butler Road to the South. The OUPD is currently comprised of thirteen uniformed police officers, one detective, four uniformed sergeants, two lieutenants, and the Chief of Police (all hereafter "OUPD"). The OUPD also has four trained emergency service dispatchers who are available to handle any police service call 24 hours a day. OUPD officers are commissioned officers with full arrest powers, are graduates of a State certified police academy and participate in ongoing in-service training. OUPD officers are extensively trained in the use of firearms and all OUPD officers carry sidearms. OUPD officers conduct foot and motor vehicle patrols throughout the campus and residence hall areas 24 hours a day, 365 days a year. In addition the OUPD officers periodically use a Bike Patrol to move about the campus.

The OUPD also employs service aides. These uniformed, radio-equipped, University students are assigned to patrol the campus, either on foot or in specially marked OUPD vehicles, to be of assistance to the public. Their presence on campus serves to supplement regular OUPD officers as additional "eyes and ears". Although not sworn officers, their presence is intended to serve as a deterrent to crime and misconduct and affords assistance in handling non-criminal functions of the OUPD.

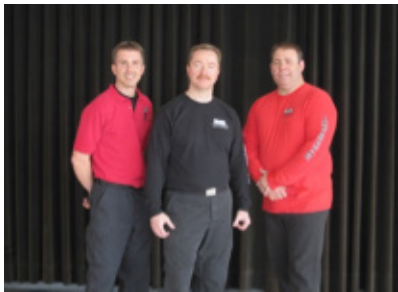
The OUPD has written mutual aid agreements with other local law enforcement agencies regarding topics including the investigation of criminal incidents. The OUPD has a good working relationship with the local municipal police agencies, the Oakland County Sheriff, the Michigan State Police, and Federal agencies. As a State-recognized police agency, the OUPD utilizes State and national computer databases to assist in providing a safe environment. For example, the OUPD uses the county wide digital radio system which allows direct radio communication between all police, fire, EMS and hospitals in Oakland County. The OUPD is also a part of the CLEMIS Public Safety Coalition which is made up of more than 140 independent police, fire and emergency medical service agencies that share intelligence across 6 counties and access the same real time information through computer databases. As sworn officers, the OUPD enforces State law and University ordinances.



On March 29, 2018 by Executive



Proclamation, the University officially adopted the National Incident Management System (NIMS) of emergency planning, execution and unified command. In addition, and as part of this Proclamation, the OUPD Chief of Police was officially designated as the University's Emergency Management Coordinator in compliance with the Michigan Emergency Management Act, Act 390 of 1976. Police and other University personnel have attended various levels of NIMS certified training according to rank and levels of responsibility.



The OUPD, as well as residence hall staff and other offices in the Student Affairs Division, sponsor regular sessions for the campus community relating to personal safety awareness; security awareness; self-defense, and self-protection; Rape Aggression Defense Program (RAD); sexual assault prevention; crime prevention programs including the prevention of burglary, theft and vandalism; operation I.D.; drug and alcohol abuse prevention. Fire prevention seminars are provided to the campus community by qualified fire safety personnel. These classes are offered during the academic semesters and upon request from student organizations, staff and faculty groups. During the reported calendar year, there were approximately 72 security awareness programs provided by the OUPD. A common theme of all awareness and crime prevention programs is to encourage students and employees to be aware of the personal responsibility for their own security and the security of others.

For more information about the OUPD, please visit our website at <https://oakland.edu/police/services/public-education/>.<sup>2</sup>

## Alcohol, Drugs, and Firearms

The OUPD, as well as University Housing and Student Affairs staff, enforces the University's alcohol and drug policy and both Federal and state law, including underage drinking laws. This document addresses: campus standards of conduct, University sanctions, and legal sanctions for violations of University standards and local, state, or federal law related to illicit drugs and alcohol, health risks, a description of applicable counseling, treatment, rehabilitation, or re-entry programs; and a biennial review of the program. Pursuant to the law, OU is issuing the guidance set forth below. A description of University policies and procedures concerning drug and alcohol use is contained in the "Drug-Free Guide," which is available to all of the campus community on an annual basis through the Office of the Dean of Students website (<https://oakland.edu/deanofstudents/policies/>

The illegal possession of dangerous weapons and firearms is a violation of University ordinance, State law and the Student Code of Conduct.

## Reporting of Crimes and Emergency Situations - Main Campus

The University encourages everyone to accurately and promptly report all crimes to the OUPD and the appropriate police agencies, when the victim of such crime elects or is unable to make such a report. The University's response to such reports is as follows: upon receipt of a call, the police dispatcher will dispatch an officer to investigate the complaint, involve additional resources if necessary to appropriately resolve the matter, and produce a formal report. A Timely Warning or Emergency Notification may also be issued as described in the Timely Warning and Emergency Notification section of this Security and Fire Safety Report.

**To Report a crime, emergency situation, or suspicious activity:**

**Contact the Oakland University Police Department at:**

**(248) 370 3331**

**911 - From a campus phone**

Crimes in progress, fires, medical emergencies, other emergencies and any suspicious activities or persons should be reported immediately to the OUPD. The University will protect the confidentiality of victims, including publicly available recordkeeping which will

<sup>2</sup> This document contains links. If the link does not work when you click on it copy the link and paste into a browser.



be accomplished without the inclusions of identifying information about the victim, to the extent permissible by the law.

“Emergency Blue Light” phones have been strategically placed throughout the campus to further assist the campus community in reporting emergencies. The blue lights are easily seen and flash when activated at the time of emergency use. The emergency phones serve as an additional means of communication with the OUPD, support the safe environment, and communicate to potential wrongdoers that their presence is not welcome.

Members of the community should immediately report crimes or emergencies to the OUPD. Reports submitted to the OUPD will be included in the annual statistical disclosure and assessed for issuing a Timely Warning or Emergency Notification when deemed necessary. Campus Security Authority’s (CSA’s) have been trained to immediately notify the OUPD of an emergency incident or dangerous situation as soon as possible.

**Daily Crime Log** The OUPD maintains a Daily Crime Log which is available to the public for review at any time at <https://oakland.edu/police/campus-safety/activity-log/>.<sup>3</sup>

**Confidential Reporting** Anyone who is the victim of a crime and who does not wish to pursue action within the University judicial system or the criminal justice system can make a confidential report. Confidential reports allow the University to keep the identity of the victim confidential while taking steps to ensure the safety of the campus community. With your permission, an OUPD officer can file a report on the details of the incident without revealing your identity (except to the Title IX Coordinator in the event of a reported sexual misconduct or sexual

harassment). The purpose of a confidential report is to comply with your wish to keep the matter confidential, while taking steps to enhance the future safety of yourself and others. With such information, the University can keep an accurate record of the number of incidents involving students, employees and visitors; determine where there is a pattern of crime with regard to a particular location, method, or assailant; and alert the campus community to potential danger. Reports filed in this manner are counted and disclosed in the annual crime statistics for the institution.

You may also report a crime or incident and request to remain confidential by contacting us through any of the OUPD’s regular channels: telephone; email, or walk-in. However, please be aware that our ability to successfully investigate and resolve issues may be adversely affected by respecting your request for confidentiality.

A person wishing to report a crime or incident and remain completely anonymous can do so by contacting the OUPD through our Anonymous Tip Page at <https://oakland.edu/police/contact-us/>.

All professional and/or pastoral counselors whose official responsibilities include providing mental health counseling to members of the campus community and who are functioning in the scope of his/her license or certification are not required to report crimes for inclusion into the Annual Security and Fire Safety Report; however, they are encouraged as a matter of policy, if and when they deem it appropriate, to inform persons being counseled of the procedures to report crimes on a voluntary, confidential basis for inclusion in the

Student Resources on Main Campus		
University Housing	(248) 370 3570	448 Hamlin Hall
Dean of Student’s Office	(248) 370 3352	Oakland Center Suite 150
Office of Student Involvement	(248) 370 2400	49 Oakland Center
Office of Diversity, Equity, and Inclusion	(248) 370 3496	Oakland Center Suite 150

<sup>3</sup> This document contains links. If the link does not work when you click on it copy the link and paste into a browser.

annual crime statistics.

The University will, upon written request, disclose to the alleged victim of a crime of violence or non-forceable sex offense proceeding the results of any disciplinary proceeding conducted by the University against the student who is the alleged perpetrator of the crime or offense. If the alleged victim is deceased as a result of such crime of offense, the University will provide the results of the disciplinary proceeding to the victim's next of kin, if so requested.

## Reporting of Crimes and Emergency Situations - Other Campus Locations

Persons that become aware of crimes that occur at other university sites which are located off Main Campus (e.g.; Macomb University Center) should notify the appropriate agency in their area first and then notify OUPD.

- Macomb County Sheriff's Office - call 911 (emergency calls) or (586) 469-5151
- Macomb Community College Police Department - (586) 286-2123
- Clinton Township Police Department - 911 (emergency calls) or (586) 493-7800

**Macomb University Center** A person may also report crimes in progress, fires, medical emergencies or other emergencies occurring at Macomb University Center to the Executive Director (248) 370-3910.

## Facilities Management

In addition to the OUPD, the Facilities Management staff maintains the University buildings and grounds on the Main Campus with a concern for safety and security. Personnel continually inspect Main Campus facilities for potential safety and security hazards. Prompt response is made to repair the identified hazards in an effort to further assist in providing a safe environment.



Main Campus administrative and academic buildings are generally locked between 11:00 p.m. and midnight daily and reopened by 7 a.m. Residence Halls, apartments and other residential facilities are generally locked as described in the Security in the Residence Halls section. During normal business hours the administrative and academic facilities at OU are open and accessible to students, staff, faculty and visitors of the University. After normal business hours and during holiday breaks, these facilities are locked and only accessible to authorized individuals. OUPD officers conduct routine security and safety patrols of the academic and administrative buildings on the Main Campus to monitor conditions and investigate any unusual circumstances.

The University's main campus is well lit and lighting surveys are routinely conducted by the Facilities Management staff. In addition, there are phones located in all residence hall living spaces and the public space of most buildings to facilitate calling for assistance if necessary.

Hours of operation for Macomb University Center are Monday – Thursday 8 a.m. - 7 p.m. and Friday 8 a.m. – 5 p.m. when classes are in session. If classes are not in session the hours of operation are 8 a.m. – 5 p.m. The building remains open after hours but the main office suites would be secured. The Macomb Community College Police Department is responsible for patrolling the area.

Macomb University Center does not have student housing facilities.



# Security in the Residence Halls - Nightwatch Program

## Components of University Housing's Residence Life Safety and Security Program

University Housing prioritizes the safety and security of our communities at all times. Please be aware of the following security measures, which are currently in place in each of our facilities:

### Card Access System

The card access system serves as a front-line defense to deter unauthorized individuals from entering residential areas. It is a major component of the University Housing security efforts. All doors that permit access to residential locations are monitored by the card access system. In order to access a residence hall, a resident must pass their Grizz Card through the card reader at the entrance of each residence hall. Public access to common lobby areas in residential facilities is available from 7 a.m.- 11 p.m. The card access system only permits residents and authorized personnel entry to the buildings outside of these hours.

### Exterior Doors

Entrances to the residential common lobby areas remain unlocked from 7 a.m. to 11 p.m.; anyone may enter the front lobby areas during this time. From 11 p.m. to 7 a.m., these doors are locked and can only be accessed by residents and authorized personnel. Students must use designated community entrances after 11 p.m. These entrances are clearly marked using signage.

### Interior Doors, Stairwells and Elevators

Entrances into the residential areas of the residence halls remain locked 24 hours a day, seven days a week, and can only be accessed by residents and authorized personnel. This includes all interior doors, stairwells, and elevators.

### Door Prop Alarms

Each residence hall is equipped with door prop alarms that monitor the status of all building entry doors. The system sounds an alarm whenever an equipped door is held open for longer than 60 seconds. All interior doors within the residential buildings are equipped with door prop alarms. The alarm panels continuously monitor the door status 24 hours a day, seven days a week.

### Administrative Video Monitors

The residence halls and student apartments are equipped with video cameras that monitor all points of entry. Everyone who enters or leaves the building is recorded. The cameras record 24 hours a day, seven days a week. Any images captured by the camera systems may be used as evidence of activity that violates University Housing and University policies, including violations of access control policies.

### Daily Hall Monitoring and Security Responsive Operations:

- All public spaces within our residence halls are closed after 11 p.m., and all exterior doors are locked after that time. In order to enter these spaces after 11 p.m., residents must use their OU ID Card to gain access.
- Residential area access points are card access only, 24 hours a day, seven days a week.
- All communities have Resident Assistants on duty from 7 p.m. to 8 a.m., Monday through Friday, and from 7 p.m. on Friday through 8 a.m. on Monday morning.
- In addition to student staff, there are also two senior staff members on duty 24 hours a day, seven days a week, 365 days a year.
- The Oakland University Police Department manages the security camera system. Cameras are placed throughout the public spaces in our communities.
- The Oakland University Police Department also regularly patrols through all of campus, including University Housing.

## **Residential Student Expectations:**

Residential students have access to all residential areas' public spaces (e.g. public area lobbies, lounges, and classrooms). Student rooms and residential floors are not public spaces. Residents must know their guests, and guests must present ID if requested by staff. Every guest must be hosted by a resident. Residents must accompany their guests at all times after passing residential area access points, which are card access only 24/7. Visitors are permitted in public spaces of a residence hall during open hours without an escort. All public spaces within our residence halls are closed after 11 p.m. In order to enter these spaces after 11 p.m., residents must use their OU ID Card to gain access.

Residents assume full responsibility for the behavior of their guests. Guests must be accompanied by their resident hosts during their stay. Anyone who attempts to gain improper access to any residence hall will be treated as a trespasser.

## **Rape, Acquaintance Rape, Domestic Violence, Dating Violence, Sexual Assault and Stalking**

Oakland University attempts to provide a secure and hospitable environment for its students. Michigan law and the University prohibit the offenses of rape, acquaintance rape, domestic violence, dating violence, sexual assault and stalking. See the following definitions. All incoming students and employees are required to take online title IX training.



<b>Definitions</b>		
<b>State Law</b>	<b>Federal Law</b>	<b>OU Policy</b>
<p><b>Domestic Violence</b> - Domestic violence means the occurrence of any of the following acts by a person this is not an act of self-defense:</p> <ul style="list-style-type: none"> <li>• Causing or attempting to cause physical or mental harm to a family or household member</li> <li>• Placing a family or household member in fear of physical harm</li> <li>• Causing or attempting to cause a family or household member to engage in involuntary sexual activity by force, threat of force, or duress</li> <li>• Engaging in activity toward a family or household member that would cause a reasonable person to feel terrorized, frightened, intimidates, harassed, or molested.</li> </ul> <p>“Family or household member” includes any of the following:</p> <ul style="list-style-type: none"> <li>• A spouse or former spouse</li> <li>• An individual with whom the person has or has had a dating relationship</li> <li>• An individual with whom the person is or has engaged in a sexual relationship</li> <li>• An individual to whom the person is related or was formerly related by marriage</li> <li>• An individual with whom the person has a child in common</li> <li>• The minor child of an individual who the person is a spouse or former spouse or whom the person has a child in common with (MCL 400.1501)</li> <li>• Resident or former resident</li> </ul>	<p><b>Domestic Violence</b> - Felony or misdemeanor crimes of violence committed</p> <ul style="list-style-type: none"> <li>• By a current or former spouse or intimate partner of the victim;</li> <li>• By a person with whom the victim shares a child in common;</li> <li>• By a person who is cohabiting with or has cohabited with the victim as a spouse or intimate partner;</li> <li>• By a person similarly situated to a spouse of the victim under the domestic or family violence laws of the jurisdiction in which the crime of violence occurred; or</li> <li>• By any other person against an adult or youth victim who is protected from that person’s acts under the domestic or family violence laws of the jurisdiction in which the crime of violence occurred.</li> </ul>	<p><b>Domestic Violence</b> - Is a current or former spouse or intimate partner of the victim under the family or domestic violence laws of the jurisdiction of OU, or a person similarly situated to a spouse of the victim;</p> <p>Is cohabitating, or has cohabitated, with the victim as a spouse or intimate partner;</p> <p>Shares a child in common with the victim; or</p> <p>Commits acts against a youth or adult victim who is protected from those acts under the family or domestic violence laws of the jurisdiction of OU.</p>
<p><b>Dating Violence</b> - Under Michigan Law, dating violence is covered under domestic violence laws but is defined as frequent, intimate associations primarily characterized by the expectation of affectional involvement. Dating relationship does not include a causal relationship or an ordinary fraternization between two individuals in a business or social context. (MCL 400.1501)</p>	<p><b>Dating Violence</b> - means violence committed by a person who is or has been in a social relationship of a romantic or intimate nature with the victim and the existence of such a relationship shall be based on the reporting party’s statement and with consideration of the length of the relationship, the type of relationship, and the frequency of interaction between the persons involved in the relationship.</p> <p>For the purposes of this definition:</p> <ul style="list-style-type: none"> <li>• Dating Violence includes, but is not limited to, sexual or physical abuse or the threat of such abuse.</li> <li>• Dating violence does not include acts covered under the definition of domestic violence.</li> </ul>	<p><b>Dating Violence</b> - Who is or has been in a social relationship of a romantic or intimate nature with the victim; and</p> <p>Where the existence of such a relationship shall be determined based on a consideration of the following factors</p> <p>The length of the relationship;</p> <p>The type of relationship; and</p> <p>The frequency of interaction between the persons involved in the relationship.</p>



<b>Definitions</b>		
<b>State Law</b>	<b>Federal Law</b>	<b>OU Policy</b>
<p><b>Stalking</b> - is a willful course of conduct involving repeated or continuing harassment of another individual that would cause a reasonable person to feel terrorized, frightened, intimidated, threatened, harassed, or molested and that actually causes the victim to feel terrorized, frightened, intimidated, threatened, harassed, or molested.</p>	<p><b>Stalking</b> - means engaging in a course of conduct directed at a specific person that would cause a reasonable person to:</p> <ul style="list-style-type: none"> <li>• Fear for the person's safety or the safety of others; or</li> <li>• Suffer substantial emotional distress.</li> </ul> <p>For the purposes of this definition:</p> <ul style="list-style-type: none"> <li>• Course of conduct means two or more acts, including, but not limited to, acts which the stalker directly, indirectly, or through third parties, by any action, method, device, or means follows, monitors, observes, surveys, threatens, or communicates to or about, a person, or interferes with a person's property.</li> <li>• Substantial emotional distress means significant mental suffering or anguish that may, but does not necessarily, require medical or other professional treatment or counseling.</li> <li>• Reasonable persons means a reasonable person under similar circumstances and with similar identities to the victim.</li> </ul>	<p><b>Stalking</b> -Engaging in a course of conduct directed at a specific person that would cause a reasonable person to:</p> <p>Fear for the person's safety or the safety of others; or</p> <p>Suffer substantial emotional distress.</p>

<b>Definitions</b>		
<b>State Law</b>	<b>Federal Law</b>	<b>OU Policy</b>
<p><b>Consent</b> - is not defined by Michigan law. However, a person consents to a sexual act by agreeing to it freely and willingly, without force or coercion.</p>	<p><b>Consent</b> - means a freely given agreement to the conduct at issue by a competent person. An expression of lack of consent through words or conduct means there is no consent. Lack of verbal or physical resistance or submission resulting from the use of force, threat of force, or placing another person in fear does not constitute consent. A current or previous dating or social or sexual relationship by itself or the manner of dress of the person involved with the accused in the conduct at issue shall not constitute consent.</p> <p>A sleeping, unconscious, or incompetent person cannot consent. A person cannot consent to force causing or likely to cause death or grievous bodily harm or to being rendered unconscious. A person cannot consent while under threat or in fear.</p>	<p><b>Consent</b> -Consent is affirmative, conscious, voluntary, and revocable. Consent to sexual activity requires of each person an affirmative, conscious, and voluntary agreement to engage in sexual activity.</p> <p>It is the responsibility of each person to ensure they have the affirmative consent of the other to engage in the sexual activity. Lack of protest, lack of resistance, or silence does not, alone, constitute consent. Affirmative consent must be ongoing and can be revoked at any time during sexual activity.</p> <p>The existence of a dating relationship or past sexual relations between the complainant and respondent will never by itself be assumed to be an indicator of consent (nor will subsequent sexual relations or dating relationship alone suffice as evidence of consent to prior conduct).</p> <p>The respondent's belief that the complainant consented will not provide a valid defense unless the belief was actual and reasonable. In making this determination, the decisionmakers will consider all of the facts and circumstances the respondent knew, or reasonably should have known, at the time. In particular, the respondent's belief is not a valid defense where:</p> <p>The respondent's belief arose from the respondent's own intoxication or recklessness;</p> <p>The respondent did not take reasonable steps, in the circumstances known to the respondent at the time, to ascertain whether the complainant affirmatively consented; or</p> <p>The respondent knew or a reasonable person should have known that the complainant was unable to consent because the complainant was incapacitated, in that the complainant was:</p> <ul style="list-style-type: none"> <li>asleep or unconscious;</li> <li>unable to understand the fact, nature, or extent of the sexual activity due to the influence of drugs, alcohol, or medication;</li> <li>unable to communicate due to a mental or physical condition;</li> </ul> <p><a href="https://www.oakland.edu/policies/health-and-safety/625/">https://www.oakland.edu/policies/health-and-safety/625/</a></p>

Definitions		
State Law	Federal Law	OU Policy
<p><b>Sexual Assault Including Rape</b> - (MCL 750.520) Michigan criminal laws regarding sexual assault are separated into four degrees of criminal sexual conduct. For each of those criminal offenses, the following definitions apply: "Sexual contact" includes the intentional touching of the victim's or actors intimate parts or the intentional touching of the clothing covering the immediate area of the victims or actor intimate parts, if that intentional touching can reasonably be construed as being for the purpose of sexual arousal or gratification, done for a sexual purpose, or in a sexual manner for:</p> <ul style="list-style-type: none"> <li>• Revenge</li> <li>• To inflict humiliation</li> <li>• Out of anger</li> </ul> <p>"Sexual penetration" means sexual intercourse; cunnilingus, fellatio, anal intercourse, or any other intrusion, however slight, of any part of a person's body or of any object into the genital or anal openings of another person's body, but emission of semen is not required.</p> <p>"Intimate parts" includes the primary genital area, groin, inner thigh, buttock, or breast of a human being.</p> <p>"Physically helpless" means that a person is unconscious, asleep, or for any reason is physically unable to communicate unwillingness to act.</p>	<p><b>Sexual Assault</b> - "Sexual assault" means an offense that meets the definition of rape, fondling, incest, or statutory rape as used in the FBI's Uniform Crime Reporting system. A sex offense is any act directed against another person, without the consent of the victim, including instances where the victim if incapable of giving consent.</p> <p><b>Rape</b> is defined as the penetration, no matter how slight, of the vagina or anus with any body part or object, or oral penetration by a sex organ of another person, without the consent of the victim.</p> <p><b>Fondling</b> is defined as the touching of the private parts of another person for the purposes of sexual gratification, without the consent of the victim, including instances where the victim is incapable of giving consent because of his/ her age or because of his/her temporary or permanent mental incapacity.</p> <p><b>Incest</b> is defined as nonforcible sexual intercourse between persons who are related to each other within the degrees wherein marriage is prohibited by law.</p> <p><b>Statutory Rape</b> is defined a nonforcible sexual intercourse with a person who is under the statutory age of consent.</p>	<p><a href="https://www.oakland.edu/policies/health-and-safety/625/">https://www.oakland.edu/policies/health-and-safety/625/</a></p> <p><a href="https://www.oakland.edu/policies/health-and-safety/626/">https://www.oakland.edu/policies/health-and-safety/626/</a></p>

1

1 This document contains links. If the link does not work when you click on it copy the link and paste into a browser.



<b>Institutional Response</b>		
<b>Incident Reported</b>	<b>Procedure Institution Will Follow</b>	<b>Evidentiary Standard</b>
Sexual Assault Including Rape and Acquaintance Rape	<ol style="list-style-type: none"> <li>1. Depending on when reported (immediate vs delayed report), institution will provide complainant with access to medical care.</li> <li>2. Institution will assess immediate safety needs of complainant.</li> <li>3. Institution will assist complainant with contacting local police if complainant requests AND complainant provided with contact information for local police department.</li> <li>4. Institution will provide complainant with referrals to on and off campus mental health providers.</li> <li>5. Institution will assess need to implement interim or long- term protective measures, such as housing changes, change in class schedule, "No Contact" directive between both parties.</li> <li>6. Institution will provide a "No trespass" (PNG) directive to accused party if deemed appropriate.</li> <li>7. Institution will verbally direct students to OUPD for guidance in obtaining a PPO.</li> <li>8. Institution will inform the complainant of the option of filing a report with the Title IX Coordinators.</li> <li>9. Institution will inform the complainant of the outcome of the investigation, whether or not the accused will be administratively charged and what the outcome of the hearing is.</li> <li>10. Institution will take necessary action against parties that retaliate against a person for complaining of sex-based discrimination or for assisting in the investigation.</li> </ol>	Preponderance of the evidence
Stalking	<ol style="list-style-type: none"> <li>1. Depending on when reported (immediate vs delayed report), institution will provide complainant with access to medical care.</li> <li>2. Institution will assess immediate safety needs of complainant.</li> <li>3. Institution will assist complainant with contacting local police if complainant requests AND complainant provided with contact information for local police department.</li> <li>4. Institution will provide complainant with referrals to on and off campus mental health providers.</li> <li>5. Institution will assess need to implement interim or long- term protective measures, such as housing changes, change in class schedule, "No Contact" directive between both parties.</li> <li>6. Institution will provide a "No trespass" (PNG) directive to accused party if deemed appropriate.</li> <li>7. Institution will verbally direct students to OUPD for guidance in obtaining a PPO.</li> <li>8. Institution will inform the complainant of the option of filing a report with the Title IX Coordinators .</li> <li>9. Institution will inform the complainant of the outcome of the investigation, whether or not the accused will be administratively charged and what the outcome of the hearing is.</li> <li>10. Institution will take necessary action against parties that retaliate against a person for complaining of sex-based discrimination or for assisting in the investigation.</li> </ol>	Preponderance of the evidence

<b>Institutional Response</b>		
<b>Incident Reported</b>	<b>Procedure Institution Will Follow</b>	<b>Evidentiary Standard</b>
Dating Violence	<ol style="list-style-type: none"> <li>1. Depending on when reported (immediate vs delayed report), institution will provide complainant with access to medical care.</li> <li>2. Institution will assess immediate safety needs of complainant.</li> <li>3. Institution will assist complainant with contacting local police if complainant requests AND complainant provided with contact information for local police department.</li> <li>4. Institution will provide complainant with referrals to on and off campus mental health providers.</li> <li>5. Institution will assess need to implement interim or long- term protective measures, such as housing changes, change in class schedule, "No Contact" directive between both parties.</li> <li>6. Institution will provide a "No trespass" (PNG) directive to accused party if deemed appropriate.</li> <li>7. Institution will verbally direct students to OUPD for guidance in obtaining a PPO.</li> <li>8. Institution will inform the complainant of the option of filing a report with the Title IX Coordinators.</li> <li>9. Institution will inform the complainant of the outcome of the investigation, whether or not the accused will be administratively charged and what the outcome of the hearing is.</li> <li>10. Institution will take necessary action against parties that retaliate against a person for complaining of sex-based discrimination or for assisting in the investigation.</li> </ol>	Preponderance of the evidence
Domestic Violence	<ol style="list-style-type: none"> <li>1. Depending on when reported (immediate vs delayed report), institution will provide complainant with access to medical care.</li> <li>2. Institution will assess immediate safety needs of complainant.</li> <li>3. Institution will assist complainant with contacting local police if complainant requests AND complainant provided with contact information for local police department.</li> <li>4. Institution will provide complainant with referrals to on and off campus mental health providers.</li> <li>5. Institution will assess need to implement interim or long- term protective measures, such as housing changes, change in class schedule, "No Contact" directive between both parties.</li> <li>6. Institution will provide a "No trespass" (PNG) directive to accused party if deemed appropriate.</li> <li>7. Institution will verbally direct students to OUPD for guidance in obtaining a PPO.</li> <li>8. Institution will inform the complainant of the option of filing a report with the Title IX Coordinators.</li> <li>9. Institution will inform the complainant of the outcome of the investigation, whether or not the accused will be administratively charged and what the outcome of the hearing is.</li> <li>10. Institution will take necessary action against parties that retaliate against a person for complaining of sex-based discrimination or for assisting in the investigation.</li> </ol>	Preponderance of the evidence

## Programs to Prevent Domestic Violence, Dating Violence, Sexual Assault and Stalking

The University engages in comprehensive programming and strategies intended to end dating violence, domestic violence, sexual assault and stalking that:

- Are culturally relevant, inclusive of diverse communities and identities, responsive to community needs.
- Consider environmental risk and protective factors.

Educational programming consists of primary prevention and awareness programs for all students and employees and ongoing awareness programs. Ongoing prevention and awareness campaigns means programming, initiatives, and strategies that are sustained over time and focus on increasing understanding of topics relevant to and skills for addressing dating violence, domestic violence, sexual assault, and stalking, using a range of strategies with audiences throughout the institution, many of which address:

- The prohibition against sexual misconduct, including domestic violence, dating violence, sexual assault and stalking (as defined by the Clery Act).
- What behavior and actions constitute consent, in reference to sexual activity, in the State of Michigan and as provided in the Student Code of Conduct.
- A description of safe and positive options for bystander intervention. Bystander intervention means safe and positive options that may be carried out by an individual or individuals to prevent harm or intervene when there is a risk of dating violence, domestic violence, sexual assault or stalking. Bystander intervention includes recognizing situations of potential harm, understanding cultural conditions that facilitate violence, overcoming barriers to intervening, identifying safe and effective intervention options, and taking action to intervene.
- Information on risk reduction. Risk reduction means options designed to decrease perpetration and bystander inaction, and to increase empowerment for victims in order to promote safety and to help individuals and communities address conditions that facilitate violence.
- Information regarding:
  - Procedures victims should follow if a crime of domestic violence, dating violence, sexual assault and stalking occurs (as described in “Procedures Victims Should Follow if a Crime of Domestic Violence, Dating Violence, Sexual Assault and Stalking Occurs” elsewhere in this document).
  - How the institution will protect the confidentiality of victims and other necessary parties (as described in “Assistance for Victims: Rights and Options” elsewhere in this document).
  - Existing counseling, health, mental health, victim advocacy, legal assistance, visa and immigration assistance, student financial aid, and other services available for victims, both within the institution and in the community (as described in “Assistance for Victims: Rights and Options” elsewhere in this document).
  - Options for, available assistance in, and how to request changes to academic, living, transportation, and working situations or protective measures (as described in “Assistance for Victims: Rights and Options” elsewhere in this document).
  - Procedures for institutional disciplinary action in cases of alleged dating violence, domestic violence, sexual assault, or stalking (as described in “Adjudication of Violations” elsewhere in this document).

If you are a victim of rape, acquaintance rape, domestic violence, dating violence, sexual assault or stalking...

- ✓ Go to a safe place.
- ✓ Obtain necessary medical treatment.
- ✓ Contact OUPD immediately by dialing 911 from a campus phone or (248) 370-3331 from any phone.
- ✓ If sexually assaulted, preserve evidence by abstaining from washing, changing clothes, douching.
- ✓ Seek counseling.





## Primary Prevention and Awareness Programs

Specifically, the University offered the following primary and ongoing prevention and awareness programs for incoming students and current students in 2023:

Name of Program	Date Held	Location Held	Which Prohibited Behavior* Covered?
Violence against women	2023	On campus	DoV, DaV, SA, S
Admissions Ambassador Training: Harrasment & Descrimination Prevention	2023	Wilson Hall	DoV, DaV, SA, S
MEN (Mentoring, Educating, Notifying)	2023	On campus	DoV, DaV, SA, S
RAD (Rape Agression Defence)	2023	On campus	DoV, DaV, SA, S
Domestic Violence, Stalking, and Bystander Intervention	2023	On campus	DoV, DaV, SAS
Sexual Assault & Healthy Relationships	2023	On campus	SA
Dean of Students Office Virtual Sexual Misconduct Training	2023	Online	SA
Love 'n Cookies	2023	On campus	DaV
Love Respectfully	2023	On campus	DoV, DaV, SA
Mocktail Mixer	2023	On campus	DoV, SA
Sexual Assault Awareness Month Tabling	2023	On campus	SA
Housing - RA Orientation	2023	On campus	DaV, SA, S
Title IX and Sexual Harrasment Prevention	2023	Online	DaV, SA, S
University Conduct Committee and Title IX	2023	On campus	DaV, SA, S
Sexual Assault and Violence Resource Table	2023	On campus	DoV, DaV, SA
Red Flag - Green Flag, Healthy Relationship Workshop	2023	On campus	DaV
The Clothesline Project	2023	On campus	SA
Take Back the Day	2023	On campus	SA
New Student Orientation	2023	On campus	SA
Advance RAD	2023	On campus	DoV, DaV, SA, S
One Love	2023	On campus	DoV, DaV, SA, S
DV/Stalking, Bystander Intervention	2023	On campus	DoV, Dav, SA, S
Bystander Intervention	2023	On campus	DoV, Dav, SA, S

\*DoV - Domestic Violence, DaV - Dating Violence, SA - Sexual Assault, S - Stalking

The University offered no awareness and prevention programs for employees in 2023.

## Risk Reduction

The Clery Act defines “risk reduction” as the “options designed to decrease perpetration and bystander inaction, and to increase empowerment for victims in order to promote safety and to help individuals and communities address conditions that facilitate violence.” With no intent to victim blame and recognizing that only rapists are responsible for rape, the following are some strategies to reduce one’s risk of sexual assault or harassment. (taken from Rape, Abuse, & Incest National Network, [www.rainn.org](http://www.rainn.org))

- Be aware of your surroundings. Knowing where you are and who is around you may help you to find a way to get out of a bad situation.
- Try to avoid isolated areas. It is more difficult to get help if no one is around.
- Walk with purpose. Even if you don’t know where you are going, act like you do.
- Trust your instincts. If a situation or location feels unsafe or uncomfortable, it probably isn’t the best place to be.
- Try not to load yourself down with packages or bags as this can make you appear more vulnerable.
- Make sure your cell phone is with you and charged and that you have cab money.
- Don’t allow yourself to be isolated with someone you don’t trust or someone you don’t know.
- Avoid putting music headphones in both ears so that you can be more aware of your surroundings, especially if you are walking alone.
- When you go to a social gathering, go with a group of friends. Arrive together, check in with each other throughout the evening, and leave together. Knowing where you are and who is around you may help you to find a way out of a bad situation.
- Trust your instincts. If you feel unsafe in any situation, go with your gut. If you see something suspicious, contact law enforcement immediately (local authorities can be reached by calling 911 in most areas of the U.S.).
- Don’t leave your drink unattended while talking, dancing, using the restroom, or making a phone call. If you’ve left your drink alone, just get a new one.
- Don’t accept drinks from people you don’t know or trust. If you choose to accept a drink, go with the person to the bar to order it, watch it being poured, and carry it yourself. At parties, don’t drink from the punch bowls or other large, common open containers.
- Watch out for your friends, and vice versa. If a friend seems out of it, is way too intoxicated for the amount of alcohol they’ve had, or is acting out of character, get him or her to a safe place immediately.
- If you suspect you or a friend has been drugged, contact law enforcement immediately (local authorities can be reached by calling 911 in most areas of the U.S.). Be explicit with doctors so they can give you the correct tests (you will need a urine test and possibly others).
- If you need to get out of an uncomfortable or scary situation here are some things that you can try:
- Remember that being in this situation is not your fault. You did not do anything wrong, it is the person who is making you uncomfortable that is to blame.
- Be true to yourself. Don’t feel obligated to do anything you don’t want to do. “I don’t want to” is always a good enough reason. Do what feels right to you and what you are comfortable with.
- Have a code word with your friends or family so that if you don’t feel comfortable you can call them and communicate your discomfort without the person you are with knowing. Your friends or family can then come to get you or make up an excuse for you to leave.
- Lie. If you don’t want to hurt the person’s feelings it is better to lie and make up a reason to leave than to stay and be uncomfortable, scared, or worse. Some excuses you could use are: needing to take care of a friend or family member, not feeling well, having somewhere else that you need to be, etc.
- Try to think of an escape route. How would you try to get out of the room? Where are the doors? Windows? Are there people around who might be able to help you? Is there an emergency phone nearby?
- If you and/or the other person have been drinking, you can say that you would rather wait until you both have your full judgment before doing anything you may regret later.

## College and Community Resources

### Oakland University Police

201 Meadow Brook Rd. Rochester, MI  
(248) 370-3331 Main Campus

### Office of Disability and Support Services

Wilson Hall, Room 202  
(248) 370-3266 Main Campus

### Office of Diversity, Equity, and Inclusion

Oakland Center Suite 150  
(248) 370-3496 Main Campus

### Veterans Support Services

Vandenberg Hall, Room 112  
(248) 370-2010 Main Campus

### Graham Health Center

408 Meadow Brook Rd. Rochester, MI  
(248) 370-2341 Main Campus

### Oakland University Counseling Center

Graham Health Center  
(248) 370-3465 Main Campus

### Dean of Students Office

Oakland Center Suite 150  
(248) 370-3352 Main Campus

### University Housing

Hamlin Hall, Room 448  
(248) 370-3570 Main Campus

### Title IX & Compliance Director

Oakland Center Suite 150  
(248) 370-2450 Main Campus

## Outside Agencies

### Child Abuse

Child Protective Services .....(855) 444-3911

### Area Hospitals

Ascension Providence, Rochester  
.....(248) 652-5000  
Pontiac General Hospital .....(248) 857-7200  
McLaren Oakland .....(248) 338-5000

### Shelter Care

Light House of Oakland County .....(248) 809-3773  
Salvation Army .....(248) 334-2407  
Grace Centers of Hope .....(248) 334-2187

### Mental Health Resources

Common Ground (24/7) .....(800) 231-1127  
Oakland Family Services .....(248) 853-0750

### Substance Abuse

Oakland County  
Office of Substance Abuse .....(248) 464-6363

### Domestic Violence / Dating Violence

If you have been a victim of domestic violence or dating violence and would like information about emergency shelter, counseling, and support services, you may contact:

Haven Crisis Center (24/7) .....(248) 334-1274

### Sexual Assault

If you have been a victim of sexual assault and would like information about medical assistance, counseling, and support services, you may contact:

Haven Crisis Center (24/7) .....(248) 334-1274

Poison Control .....(800) 222-1222



## Procedures Victims Should Follow if a Crime of Domestic Violence, Dating Violence, Sexual Assault and Stalking Occurs

After an incident of sexual assault, dating violence or domestic violence, the victim should consider seeking medical attention as soon as possible. Evidence may be collected even if you choose not to make a report to law enforcement.<sup>1</sup> You may be required to provide your name to the attending medical professional but are not required to provide your name to law enforcement. It is important for a victim of sexual assault to not bathe, douche, smoke, change clothing or clean the bed/linen/area where they were assaulted if the offense occurred within the past 120 hours so any evidence may be preserved for assisting in proving the alleged criminal offense occurred/or is occurring or may be helpful in obtaining a protection order. In circumstances of sexual assault, if victims do not opt for forensic evidence collection, health care providers can still treat injuries and take steps to address concerns of pregnancy and/or sexually transmitted infections. Victims of sexual assault, domestic violence, stalking, and dating violence are encouraged to also preserve evidence by saving text messages, instant messages, social networking pages and other communications. Keeping pictures, logs or copies of other documents, if any, would also be useful to University adjudicators/investigators or police.



As time passes, evidence may dissipate or become lost or unavailable, thereby making investigation, possible prosecution, disciplinary proceedings, or obtaining protection from abuse orders related to the incident more difficult. If a victim chooses not to make a complaint regarding an incident, he or she nevertheless should consider speaking with Campus Police or other law enforcement to preserve evidence in the event the victim decides to report the incident to law enforcement or the University at a later date to assist in proving the alleged criminal offense occurred or may be helpful in obtaining a protection order.

Victims may report the occurrence of domestic violence, dating violence, sexual assault or stalking to the OUPD or local police. There are other University resources listed in this report that will help a victim contact the OUPD or local police if the victim requests that assistance. In addition to reporting the incident to the OUPD, victims may choose to report the assault/stalking to the Assistant Dean of Students who serves as the Deputy Title IX Coordinator (248) 370-3552 and/or the Title IX and Compliance Director (248) 370-2450. Victims may also notify other local law enforcement agencies or request that campus security authorities assist the victim in notifying law enforcement agencies. The Dean of Students' Office can assist with such requests.

### Confidentiality



Victims may request that directory information on file with the University be withheld by submitting their request to the Oakland University Office of the Registrar, 160 North Foundation Hall, 318 Meadowbrook Drive, Rochester, MI 48309 (248) 370-3450.

Regardless of whether a victim has opted-out of allowing the University to share "directory information," personally identifiable information about the victim and other necessary parties will be treated as confidential and only shared with persons who have a specific need-to-know, i.e., those who are investigating/adjudicating the report or those involved in providing support services to the victim, including accommodations and protective measures. By only sharing personally identifiable information with individuals on a need-to-know basis, the institution will maintain as confidential, any accommodations or protective measures provided to the victim to the extent that maintaining such confidentiality would not impair the ability of the institution to provide the accommodations or protective measures.

---

<sup>1</sup> Under the Violence Against Women and Department of Justice Reauthorization Act of 2005, starting in 2009, states must certify that they do not "require a victim of sexual assault to participate in the criminal justice system or cooperate with law enforcement in order to be provided with a forensic medical exam, reimbursement for charges incurred on account of such an exam, or both."

The University does not publish the name of crime victims or other identifiable information regarding victims in the Daily Crime Log or in the annual crime statistics that are disclosed in compliance with the Jeanne Clery Disclosure of Campus Security Policy and Campus Crime Statistics Act. Furthermore, if a Timely Warning Notice is issued on the basis of a report of domestic violence, dating violence, sexual assault or stalking, the name of the victim and other personally identifiable information about the victim will be withheld.

The University also protects the identities of victims, among other things, by removing such information from police reports and other documents before those reports and documents are released to the public, to the extent permitted by law.

## Assistance for Victims: Rights & Options

Regardless of whether a victim elects to pursue a criminal complaint or whether the offense is alleged to have occurred on or off campus, the university will assist victims of sexual assault, domestic violence, dating violence, and stalking and will provide each victim with a written explanation of their rights and options. Such written information will include:

- The procedures victims should follow if a crime of dating violence, domestic violence, sexual assault or stalking has occurred.
- Information about how the institution will protect the confidentiality of victims and other necessary parties.
- A statement that the institution will provide written notification to students and employees about victim services within the institution and in the community.
- A statement regarding the institution's provisions about options for, available assistance in, and how to request accommodations and protective measures.
- An explanation of the procedures for institutional disciplinary action.

## Rights of Victims and the Institution's Responsibilities for Orders of Protection, "No Contact" Orders, Restraining Orders, or Similar Lawful Orders Issued by a Criminal, Civil, or Tribal Court or by the Institution

Oakland University complies with Michigan law in recognizing orders of protection. Any person who obtains an order of protection from Michigan or any reciprocal state should provide a copy to the OUPD. A complainant may then meet with the OUPD to develop a Safety Action Plan, which is a plan for campus police and the victim to reduce risk of harm while on campus for coming and going from campus. This plan may include, but is not limited to: escorts, parking arrangements, and other interim protective measures.

Types of Orders Available In Our Area			
Type of Order	Who Can File	Court	Based On
Domestic Violence Personal Protection Order - Up to 1 year, may be renewed.	Family or household members including: <ul style="list-style-type: none"> <li>• Spouses, former spouses</li> <li>• Parent, child, foster parent</li> <li>• People who have kids together</li> <li>• Intimate/dating relationship, past or present</li> <li>• Persons who have lived together</li> <li>• Same sex couples are eligible</li> </ul>	Any Circuit Court in the State of Michigan.	Causing or trying to cause injury or placing some one in fear of imminent serious harm, or harassment or stalking type behavior.
Stalking Personal Protection Order (Non-domestic) - 1 year, may be renewed.	Any person who is a victim of stalking. No relationship with stalker is required.	Any Circuit Court in the State of Michigan.	Pattern of conduct (2 or more events), closely related in time, that cause distress or make a victim believe the stalker will cause harm.
Sexual Assault Personal Protection Order (Non-domestic) - 1 year, may be renewed.	Any person who was a victim of a sexually oriented offense. No relationship with offender is required. Case does not have to be criminally prosecuted.	Any Circuit Court in the State of Michigan.	Sexual assault or unwanted sexual contact.

Types of Orders Available In Our Area			
Type of Order	Who Can File	Court	Based On
Juvenile Personal Protection Order (Domestic, Non-domestic, Sexual assault, or Stalking) - 1 year, may be renewed.	Victim (any age) of abuse by a person who is between the ages of 10 and 18.	Any Circuit Court in the State of Michigan.	Assault, stalking, sexual offenses, threats of harm or aggravated trespass.
Persona Non Grata (PNG)	The Dean on Students Office, Chief of Police. Office of Legal Affairs will file on the behalf of the community for overall safety.	N/A	Violation of an OU Policy, local ordinance, or state law.

The University cannot apply for a legal order of protection, no contact order or restraining order for a victim from the applicable jurisdiction(s). The victim is required to apply directly for these services at ANY Circuit Court in the State of Michigan. A Personal Protection Order, or PPO is an order issued by the Circuit Court. The 6th Circuit Court is located in the Oakland County Court house at 1200 N. Telegraph Rd. Pontiac, MI 48341. The PPO office is located in the Juvenile Intake area on the Ground Floor, East Wing of the courthouse. Phone: (248) 975-9511 Web: [oakgov.com](http://oakgov.com) <sup>2</sup>

The University may also issue an institutional no contact order if deemed appropriate. If the University receives a report that such an institutional no contact order has been violated, the University will initiate disciplinary proceedings appropriate to the status of the accused (student, employee, etc.) and will impose sanctions if the accused is found responsible for violating the no contact order.

### Accommodations and Protective Measures Available for Victims

Upon receipt of a report of domestic violence, dating violence, sexual assault or stalking, Oakland University will provide written notification to students and employees about accommodations available to them, including academic, living, transportation and working situations. The written notification will include information regarding the accommodation options, available assistance in requesting accommodations, and how to request accommodations and protective measure.

At the victim’s request, and to the extent of the victim’s cooperation and consent, University offices will work cooperatively to assist the victim in obtaining accommodations. If reasonably available, a victim may be offered changes to academic, living, working or transportation situations regardless of whether the victim chooses to report the crime to campus police or local law enforcement. Examples of options for a potential change to the academic situation may be to transfer to a different section of a class, withdraw and take a class at another time if there is no option for moving to a different section, etc. Potential changes to living situations may include moving to a different room or residence hall. Possible changes to work situations may include changing working hours. Possible changes in transportation may include having the student or employee park in a different location, assisting the student or employee with a safety escort, etc.

To request changes to academic, living, transportation and/or working situations or protective measures, a victim should contact the Dean of Student’s Office. These resources are available regardless of whether the victim chooses to report the crime to the OUPD or local law enforcement.

---

<sup>2</sup> This document contains links. If the link does not work when you click on it copy the link and paste into a browser.

## On and Off Campus Services for Victims

Upon receipt of a report of domestic violence, dating violence, sexual assault or stalking, Oakland University will provide written notification to the victim about existing assistance with and/or information about obtaining resources and services including counseling, health, mental health, victim advocacy, legal assistance, visa and immigration assistance, student financial aid, changing academic living, transportation, and working situations and assistance in notifying appropriate local law enforcement if they choose to do so. These resources will be available regardless of whether the victim chooses to report the crime to the OUPD or local law enforcement. Resources available to persons who report being the victim of sexual assault, domestic violence, dating violence, or stalking, include:

- <http://www.rainn.org><sup>3</sup>– Rape, Abuse and Incest National Network
- <https://www.justice.gov/ovw/sexual-assault> - Department of Justice
- <http://www2.ed.gov/about/offices/list/ocr/index.html> Department of Education, Office of Civil Rights

Filing a police report with a University officer will not obligate the victim to prosecute, nor will it subject the victim to scrutiny or judgmental opinions from officers. Filing a police report will:

- Ensure that a victim of domestic violence, dating violence, sexual assault or stalking receives the necessary medical treatment and tests at no expense to the victim.
- Provide the opportunity for collection of evidence helpful in prosecution, which cannot be obtained later.
- Ensure the victim has access to free confidential counseling from counselors specifically trained in the area of domestic violence, dating violence, sexual assault or stalking.
- Ensure the necessary documentation is completed by the University to assist in protecting his or her rights in obtaining orders of protection, no contact orders, restraining orders, or similar lawful orders issued by a criminal, civil, or tribal court

Institutional disciplinary procedures are detailed in the Student Code of Conduct (<https://www.oakland.edu/deanofstudents/student-code-of-conduct/>). Institutional disciplinary procedures may result in a range of sanctions for offenders including warnings, suspension or dismissal from the University. A table of disciplinary procedures and the appropriate evidentiary standards are attached.

<sup>3</sup> This document contains links. If the link does not work when you click on it copy the link and paste into a browser.

On Campus		
Type	Service Provider	Contact Information
Counseling	Oakland University Counseling Center	(248) 370-3465
Health	Graham Health Center	(248) 370-2341
Mental Health	Oakland University Counseling Center	(248) 370-3465
Visa and Immigration Assistance	International Students and Scholars	(248) 370-3358
Student Financial Services	Financial Aid Department	(248) 370-2550
Gender and Sexuality Center	Gender and Sexuality Center	(248) 370-4336

Off Campus		
Type	Service Provider	Contact Information
Health	Ascension Providence Rochester	(248) 652-5000
Health	St. Joseph Mercy Hospital	(248) 858-3000
Victim Advocacy	HAVEN	(248) 334-1274
Victim Advocacy	Common Ground 24 Hour Crisis Line	(800) 231-1127
Victim Advocacy	Turning Point	(586) 463-6990
Legal Assistance	Oakland County Prosecutor's Office (Victim Services)	(248) 858-0656



## Adjudication of Violations

The university's disciplinary process includes a prompt, fair, and impartial investigation and resolution process. In all instances, the process will be conducted in a manner consistent with the Student Code of Conduct and is transparent to the accuser and the accused. Usually, the resolution of domestic violence, dating violence, sexual assault and stalking complaints are completed within 60 days of the report. However, each proceeding allows for extensions of time frames for good cause with written notice to the accuser and the accused of the delay and the reason for the delay. University officials involved in the investigation or adjudication of domestic violence, dating violence, sexual assault and stalking complaints are trained annually on the issues related to domestic violence, dating violence, sexual assault, and stalking as well as how to conduct an investigation and hearing process protecting the safety of the victim and promotes accountability. Furthermore, the Student Code of Conduct ensures:

- The accuser and the accused will have timely notice for meetings at which the accuser or accused, or both, may be present.
- The accuser, the accused and appropriate officials will have timely and equal access to any information used during formal and informal disciplinary meeting and hearings.
- The institutional disciplinary procedures will not be conducted by officials who have a conflict of interest or bias for or against the accuser or the accused.
- The accuser and the accused will have the same opportunities to have others present during any institutional disciplinary proceeding. The accuser and the accused each have the opportunity to be advised by an advisor of their choice at any stage of the process and to be accompanied by this advisor to any related meeting or proceeding. The University will not limit the choice of advisor or presence for either the accuser or the accused in any meeting or institutional disciplinary proceeding. However, the role of the advisor is limited to consulting and advising and he/she may not speak on behalf of the student. The advisor can, however, ask direct questions to the opposing party and other witnesses during the formal hearing process.
- The accuser and the accused will be notified concurrently, in writing, of any final decision of any disciplinary proceedings.
- The accuser and the accused will be notified concurrently in writing, of the procedures for the accused and the victim to appeal the result of the institutional disciplinary proceeding. When an appeal is filed, the accuser and the accused will be notified concurrently in writing of the final result once the appeal is resolved.

Whether or not criminal charges are filed, the University<sup>1</sup> or a person may file a complaint under the following policies, depending upon the status of the accused (student or employee).

- Cases of domestic violence, dating violence, sexual assault, and stalking are adjudicated through the Student Code of Conduct (<https://www.oakland.edu/deanofstudents/student-code-of-conduct/>). Students may file a report under the Student Code of Conduct by reporting an incident with University Housing Staff, the Oakland University Police Department, or a staff member in the Dean of Students Office.

Proceedings are conducted by officials who, at minimum, receive annual training on the the issues related to dating violence, domestic violence, sexual assault, and stalking, and on how to conduct an investigation and hearing process that protects the safety of victims and protects accountability. Judicial procedures for addressing cases of non-academic, academic or student organization misconduct vary slightly, but the following steps are included in each process. The term "dean of students" as used in this document shall mean "dean of students or other person designated by the vice president for student affairs to process and/or hear case(s)." The focus of the judicial process shall be to determine whether a student has violated campus standards or regulations. Deviations from prescribed judicial procedures shall not invalidate a decision or proceeding unless, in the opinion of the dean of students, significant prejudice to a student resulted from the deviation.

---

<sup>1</sup> Title IX states that if an institution knows or reasonably should know of sexual harassment, to include sexual violence, the institution has a duty to review. Consequently, whether a complainant chooses to cooperate or not should not be the deciding factor for whether or not disciplinary charges are brought against an accused party. If an investigation determines that it is more likely than not that the institution's sexual misconduct policy was violated, then the "University" may assume the role of the complainant.

## Adjudication Process

- **Complaint:** A complaint of misconduct is written and includes specific allegations or charges. Any faculty, staff or student who is aware of possible student misconduct is requested to report the alleged violation to the dean of students.
- **Fact-finding:** Upon receipt of a complaint or report of alleged student misconduct, the student respondent shall meet with the dean of students or assistant dean of students for fact-finding to determine if University charges and a hearing are warranted. The student respondent may have an adviser of their choice present at the meeting. At the meeting, the student shall be informed of the alleged violation and advised of all his/her rights.
- **Notice:** Upon determination of the need for a disciplinary hearing by the Dean of Students or his/her designee, the student respondent will receive written notification. Written notice includes a statement of the alleged misconduct with sufficient particulars to enable the student respondent to prepare his/her defense, the date, time and place of any hearing, and the names of witnesses who are scheduled to appear at the hearing. Notice is provided at least 72 hours in advance of any hearing.
- **Notification of Hearing Outcome:** Within 48 hours of the hearing typically both parties will be notified in writing of the outcome.
- **Appeal Process:** Appeals must be submitted within ten (10) days of receipt of findings. Both parties have appeal rights. Appeals are reviewed and determined in a fair and impartial manner by the Vice President for Student Affairs. All information submitted will be reviewed to determine whether there are grounds for an appeal. If the appeal is rejected, the student will be informed and the case will be closed. If the appeal is accepted, a new hearing process consistent with the SCC will commence. The decision of the Vice President of Student Affairs is final.
- **Anticipated Timeline:** The University will strive to complete all steps of the disciplinary process within sixty (60) calendar days of the reporting of sexual misconduct but extensions may be warranted in some cases. Written notice will be provided to the students in such circumstances. Please refer to the Student Code of Conduct for more detailed information.
- **Decision Making Process:** All complaints of sexual misconduct against a University student will be investigated and adjudicated in accordance with the hearing process outlined in the Student Code of Conduct. Information presented during the hearing process will be assessed utilizing a "Preponderance of Evidence" standard (that which is more likely than not) to determine whether or not the accused violated campus standards or regulations.

## Possible Sanctions

- **Reprimand:** A written reprimand expressing OU's dissatisfaction with the student's conduct and clarifies expected behavior in the future.
- **Probation:** Written notification that of any further violations within the probationary period shall result in more severe disciplinary action: The probationary period will be for a specific period of time or until the completion of any specified requirements or conditions that are part of the probation.
- **Deferred Suspension:** The student remains enrolled; however, any violation of the SCC or OU Policies during the period of deferred suspension will, after a determination of responsibility, result in suspension.
- **Suspension:** Removal of a student from OU for a specified period of time. Suspensions can be effective immediately or begin at a time to be determined by the committee.
- **Persona Non Grata (PNG):** Restriction of a student's access to designated areas of OU property or the entire OU campus. All PNG's are issued at the discretion of the Dean of Students office, OUPD and/or OU's Vice President for Legal Affairs. All persons declared PNG will receive written notification informing them of their status in person, via email, or via US Mail; however, OU is not responsible for a student's refusal to accept the PNG notice. In addition, a student will receive a "PNG Hold" status on his or her student account.  
A student can be declared PNG: (i) on an interim basis pending a student conduct, academic conduct, or other administrative hearing; (ii) as a sanction resulting from any such hearings; (iii) if OU determines that their presence in a designated area or OU's property or on OU's campus is required to protect the safety and well-being of OU's

students, faculty, staff or property; or (iv) for any reason in accordance with OU Policy and/or applicable law. All requests by a student for removal of the PNG status must be submitted in writing to the Dean of Students office.

- **Expulsion:** Permanent removal from OU.
- **Developmental Sanctions:** Educational sanctions designed to develop student behavior.
- **Fines/fees:** Fines and fees.
- **Revocation of Degree:** Revocation of a degree previously awarded by OU.
- **Withholding Degree:** Withholding of a degree by OU.

## Protective measures available to a victim alleging misconduct

There a number of protective measures available to the alleged victim, including but not limited to:

- **No-Contact Order:** alleged perpetrator is told to have no contact with alleged victim.
- **On Campus Housing Change:** change in housing assignment for either the alleged perpetrator or the alleged victim.
- **Classroom Accommodation:** a change in a classroom assignment for the alleged perpetrator or the alleged victim.
- An adjustment to on campus working conditions.

Policy applicable to employees accused of domestic violence, dating violence, sexual assault, and stalking:

- **How to File a Disciplinary Complaint Under this Policy:** All complaints of domestic violence, dating violence, sexual assault and stalking against a University employee should be filed with the Diversity, Equity, and Inclusion Office and the University's Title IX and Compliance Director.
- **How the University Determines Whether This Policy will be Used:** Office of Title IX and Compliance will look at a number of factors, including, whether the complaint (a) arose in the course of University Program or activity or may have the effect of contributing to or creating a hostile environment on campus, (b) is directed against a University employee and (c) if factually supported the behavior could constitute sexual misconduct.
- **Anticipated Timelines:** The Title IX and Compliance Director will create a written report describing his/her factual findings, the basis for those findings and a determination and will strive to complete the investigation within 60 days of receipt of the complaint.
- **Possible Sanctions:** The The Title IX and Compliance Director will send their investigation report to the Vice President for Human Resources, the Vice President for Academic Affairs or the Dean of Students, as appropriate, for further action. If the Respondent is a Vice President, the report will be sent to the President. Disciplinary action, up to termination from the University, will be imposed in accordance with the applicable collective bargaining agreement, employment contract or employment policy, if any.
- **Protective Measures Available to a Victim Alleging Misconduct:** Oakland University will take the appropriate steps necessary to ensure that all protective measures are taken in order for a victim of domestic violence, dating violence, sexual assault, and/or stalking to be protected while on campus. Some of the protective measures that can be taken are as follows: visual escort done by OUPD, change of apartment or dorm room, assistance in obtaining a Personal Protection Order through the court, issuing a Persona Non Grata (PNG) letter to the suspect which bans that individual from campus, and guaranteeing an appropriate response by OUPD when contacted for assistance in these cases.
- **Standard of Evidence:** The standard of evidence used during any institutional conduct proceeding arising from such a report is the preponderance of evidence.
- **Advisors:** Both the victim and the accused are entitled to have an advisor of their choice present during the investigation, including the opportunity to be accompanied to any related meeting. Both the victim and the accused shall be concurrently informed in writing of the result that arises from an allegation of domestic violence, dating violence, sexual assault, or stalking.
- **Deceased Victims:** If the alleged victim of such crime or offense is deceased as a result of such crime or offenses, the next of kin of such victim shall be informed of the outcome of the proceeding. These procedures will be followed regardless of where the alleged offense occurred. Compliance with this paragraph does not constitute a violation of the Family Educational Rights and Privacy Act (FERPA).

A student or employee who reports to an institution of higher education that the student or employee has been a victim of domestic violence, dating violence, sexual assault, or stalking, whether the offense occurred on or off campus, shall be provided with a written explanation of the student's or employee's rights and options.

Oakland University William Beaumont School of Medicine has a separate hearing process and possible sanctions which can be found here: <https://www.oakland.edu/medicine/forms-and-critical-documents/critical-documents/student-performance-review-committee>

## How To Be An Active Bystander

Bystanders play a critical role in the prevention of sexual and relationship violence. Bystander intervention is defined as the “safe and positive options that may be carried out by an individual or individuals to prevent harm or intervene when there is a risk of dating violence, domestic violence, sexual assault, or stalking.” Bystander intervention occurs when an individual interrupts a potentially harmful situation that they encounter. They are “individuals who observe violence or witness the conditions that perpetuated violence. They are not directly involved but have the choice to intervene, speak up, or do something about it.”<sup>2</sup> We want to promote a culture of community accountability where bystanders are actively engaged in the prevention of violence without causing further harm. We may not always know what to do even if we want to help. Below is a list of some ways to be an active bystander<sup>3</sup>. Further information regarding bystander intervention may be found. If you or someone else is in immediate danger, dial 911. This could be when a person is yelling at or being physically abusive towards another and it is not safe for you to interrupt.

- Watch out for your friends and fellow students/employees. If you see someone who looks like they could be in trouble or needs help, ask if they are ok.
- Interrupt people who seclude, hit on, try to make out with, or have sex with people who are incapacitated.
- Speak up when someone discusses plans to take sexual advantage of another person.
- Believe someone who discloses sexual assault, abusive behavior, or experience with stalking.
- Refer people to on or off campus resources listed in this document for support in health, counseling, or with legal assistance.

## Warning Signs of Abusive Behavior

Domestic violence, dating violence, and/or sexual assault can happen to anyone. Perpetrators of physical abuse use power and control over their victims. The following are a few warning signs that a perpetrator may use:

- Controlling behavior
- Act possessive or jealous
- Use emotional abuse
- Does not trust their significant other and constantly checks up on them (e.g. reads text messages, checks their email and phone calls)

Although not all victims of physical abuse act the same some common signs exhibited are as follows:

- Will not look you in the eye
- Low self-esteem; if they use to be confident
- Always aware of their surroundings (e.g. knows where the perpetrator is at all times)
- Personality changes

There are no clear cut ways to prevent sexual assault and even though there are occasionally warning signs you may not recognize these warning signs and it's important to remember sexual assault is never your fault. No perpetrator of sexual assault is the same but some techniques utilized in social settings in an attempt to isolate an individual are as follows:

- Attempts to continuously offer alcoholic drinks to a person
- Overly nice in an attempt to isolate (e.g. offers to walk you home, or escort you to the restroom, etc.)

<sup>2</sup> Burn, S.M. (2009). A situational model of sexual assault prevention through bystander intervention. *Sex Roles*, 60, 779-792

<sup>3</sup> Bystander intervention strategies adapted from Stanford University's Office of Sexual Assault & Relationship Abuse.



- Crossing your boundaries
- Doesn't listen to your opinions

## Michigan Public Sex Offender Registry

The Campus Sex Crimes Prevention Act (CSCPA) of 2000 is a Federal Law that provides for the tracking of convicted sex offenders enrolled at, or employed at, institutions of higher education. The Campus Sex Crimes Prevention Act (CSCPA) of 2000 further amends the Family Educational Rights and Privacy Act of 1974 ((FERPA) to clarify that nothing in the Act can prohibit an educational institution from disclosing information provided to the institution concerning registered sex offenders.

Members of the campus community can access the Michigan Public Sex Offender Registry database maintained by the Michigan State Police. Users can search the database using name, city, zip code or county. The database can be accessed at [https://www.communitynotification.com/cap\\_main.php?office=55242](https://www.communitynotification.com/cap_main.php?office=55242)<sup>4</sup>.

## Adam Walsh Child Protection Act

The Walsh Act organizes sex offenders into three tiers according to the crime committed, and mandates that Tier 3 offenders (the most serious tier) update their whereabouts every three months with lifetime registration requirements. Tier 2 offenders must update their whereabouts every six months with 25 years of registration, and Tier 1 offenders must update their whereabouts every year with 15 years of registration.

**Michigan Public Sex Offender Registry**

Search for Offenders in your area | Register for Email Alerts | Links | Contact

**Welcome**

This registry is made available through the Internet with the intent to better assist the public in preventing and protecting against the commission of future criminal sexual acts by convicted sex offenders.

The [Sex Offenders Registration Act, MCL 28.721 et seq.](#), directs the Michigan State Police (MSP) to develop and maintain a public registry and provides guidelines on the type of offender information available to the public. The offense link available on the offender details page reflects the current statute and due to continuous legislative changes, may not be indicative of the statute at the time the offender was convicted.

The information contained on the Public Sex Offender Registry (PSOR) can change quickly. The MSP frequently updates the registry in a continuous effort to provide complete and accurate information. While much of the information is obtained from public records, some information, such as physical description and residence, is gathered from the offenders themselves who may fail to provide accurate information. Therefore, the MSP makes no representation, express or implied, that the information contained on the PSOR is accurate. Any individual who believes information contained on the PSOR is not accurate should contact the local law enforcement agency, sheriff's office, or the nearest state police post having jurisdiction over the offender's residence.

Information provided through the PSOR is public information. However, it is your responsibility to make sure the records accessed through the registry pertain to the person about whom you are seeking information. Extreme care should be exercised in using any information obtained from this web site. Information on this site must not be used to unlawfully injure, harass, or commit a crime against any individual named in the registry or residing or working at any reported address. Any such action could result in civil or criminal penalties. The MSP is not responsible for any errors or omissions produced by secondary dissemination of this information.

[Click Here To Search For Offenders In Your Area.](#) 231

<sup>4</sup> This document contains links. If the link does not work when you click on it copy the link and paste into a browser.

# Timely Warnings, Emergency Notifications and Emergency Procedures/Evacuations

## Timely Warnings

The University will issue timely warnings regarding any Clery Act crimes occurring on the University's campuses, on public property within or immediately adjacent to the campus and in or on non-campus buildings or property that the University owns or controls, that are reported to campus security authorities or a local law enforcement agency and are considered to represent a serious or continuing threat to students and employees. Timely warnings may be issued for threats to persons or property. The University withholds the names of victims as confidential. Timely warnings will be provided to students and employees in a manner that is timely and will aid in the prevention of similar occurrences. Timely warnings will be issued if deemed necessary due to an ongoing or serious threat posed against the University community. Timely warnings are typically issued for the following Uniformed Crime Reporting Program (UCR)/National Incident Based Reporting System (NIBRS) crime classifications: major incidents of arson, aggravated assault, and murder/non negligent manslaughter, robbery, and sex offenses. Cases of aggravated assault and sex offenses are considered on a case-by-case basis, depending on the facts of the case and the information known by the OUPD. For example, if an assault occurs between two students who have a disagreement, there may be no on-going threat to other University community members and a timely warnings would not be distributed. In cases involving sexual assault, they are often reported long after the incident occurred, thus there is no ability to distribute a "timely" warning to the University community. Sex offenses will be considered on a case by case basis depending on when and where the incident occurred, when it was reported, and the amount information known by the OUPD. Cases involving property crimes will be assessed on a case by case basis and alerts will typically be sent if there is a discernible pattern of crime. The University's Chief of Police or his or her designee reviews all reports to determine if there is an on-going threat to the community and if the distribution of a timely warning is warranted. Timely warnings may also be posted for other crime classifications and locations, as deemed necessary.



If disseminated and if available, timely warnings will include information identifying the specific separate campus affected. Timely warnings will not be issued for non-Clery Act crimes (unless they constitute a significant emergency or dangerous situation that would require an emergency notification) or for Clery Act crimes reported to pastoral or professional counselors. Timely warnings may not be issued for situations that may jeopardize a police investigation or if a significant amount of time has gone by from the time the crime was reported to OUPD. For example, a crime is reported to OUPD but occurred five years prior.

The University regularly communicates with local police requesting their cooperation in informing the University about crimes reported to them that may warrant timely warnings.

**The Macomb University Center** has an administrator trained, assigned and identified as a Campus Security Authority (CSA). Each of these CSAs has been trained to immediately notify the local public safety agency of jurisdiction of any emergency incident, dangerous situation or crime which may require a timely warning as identified in this Security and Fire Safety Report. As soon as possible thereafter, the CSA will also notify the OUPD and the OUPD will decide whether to issue a timely warning as described in this Safety and Security Report.

## The Process for Issuing Timely Warnings

Decisions regarding issuance of timely warnings will be made on a case-by-case basis in light of all the known facts surrounding a reported Clery Act crime, including without limitation the nature of the crime, the continuing danger to the campus community and the possible risk of compromising law enforcement efforts. The University will issue a timely warning for all Clery Act crimes that occur on Clery Act geography that are reported to campus security authorities or local police agencies and are considered by the institution to represent a serious or continuing threat to students and employees.

The following sections describe the University's process for deciding when timely warnings will be issued, who will receive the warnings, what information the warnings will contain and the method(s) to be used to disseminate the warnings.

## Responsibility for Issuing Timely Warnings

The OUPD is the department responsible for deciding when a timely warning will be issued. The OUPD will, upon discovering or receiving notice of a Clery Act crime that may require issuance of a timely warning, internally notify the Chief of Police (or designee) through the chain of command.

If the Chief of Police (or designee) decides a timely warning should be issued, he or she will select one or more of the systems described below to be used to issue the timely warning. Thereafter, the University's Media Relations department will be notified to assist in preparing the content of additional warnings, and disseminate such warnings as directed by the Chief of Police (or designee). The Media Relations department will also be responsible for the content and dissemination of any updates to the timely warning. They will use some or all of the systems described below to issue follow up information.



**EXCEPTION:** If OUPD discovers or receives notice of a Clery Act crime that may require issuance of a timely warning, and the OUPD concludes that a timely warning should be issued before the Chief of Police (or designee) can be notified, then the highest ranking on-duty OUPD officer may immediately issue a timely warning utilizing the process described above.

As soon as reasonably possible thereafter, on duty members of the OUPD will ensure the Chief of Police (or designee) is notified internally through the chain of command.

Once notified, the Chief of Police (or designee) shall ensure the above notification process is being followed and will then be responsible for notifying designated University administrators through the chain of command.

Once a decision is made to initiate a timely warning, one or more of the following primary notification methods may be used depending upon the relevant circumstances:

Modality	Primary Sender	Secondary Sender	Authority for Approving & Sending
Blast Email to Official Oakland.edu email	Communications & Marketing	OUPD	Director of Campus Comm.
Flyers on Key Buildings	OUPD	OUPD	Chief of Police
Text Message	OUPD	Communications & Marketing	Director of Campus Comm.
Posting on Police Web site	OUPD	OUPD	Chief of Police
Posting on University Web site	Communications & Marketing	Communications & Marketing	Director of Campus Comm.
Social Media (Facebook, Twitter, etc.)	Communications & Marketing	OUPD	Director of Campus Comm.
Local Television	Communications & Marketing	OUPD	Director of Campus Comm.
Police Vehicle Loudspeaker	OUPD	OUPD	Chief of Police
Electronic Digital Signage	OUPD	OUPD	Director of Campus Comm.

## Emergency Notifications

The University will issue emergency notifications to the campus community (or a segment or segments of the campus community), upon confirmation of a reported significant emergency or dangerous situation involving an immediate threat to the health or safety of students or employees occurring on Oakland University's main campus and designated separate campuses. The OUPD is responsible for confirming the existence of a significant emergency or dangerous situation as described in this paragraph. The University withholds the names of victims as confidential.



The OUPD will, without delay, and taking into account the safety of the community, determine the content of the emergency notification and initiate the notification system, unless issuing a notification will, in the professional judgment of responsible authorities, compromise efforts to assist a victim or to contain, respond to, or otherwise mitigate the emergency.

Emergencies or dangerous situations may include, without limitation, disease outbreaks, severe weather (e.g., tornado, hurricane, etc.), gas leaks, fires, explosions and chemical or hazardous waste spills.

The OUPD, upon confirming an emergency or dangerous situation exists, is responsible for determining the appropriate segment(s) of the communities of any campus to be notified and determining the content of and method(s) for disseminating an emergency notification as described below.

The OUPD regularly communicates with local police agencies requesting their cooperation in informing the University about significant emergencies and dangerous situations reported to them that may warrant an emergency response.

The CSAs at the Macomb University Center have been trained to immediately notify the local public safety agency of jurisdiction of any emergency incident, dangerous situation or crime which may require an emergency notification as identified in this Annual Security and Fire Safety Report. As soon as possible thereafter, the CSA will also notify the OUPD and the OUPD will decide whether to issue an emergency notification as described in this Safety and Security Report. If available, it is important to register for alerts at these locations as well in order to be notified about emergency situations.

Once a decision is made to initiate an emergency notification, one or more of the following primary notification methods may be used depending upon the relevant circumstances:

Modality	Primary Sender	Secondary Sender	Authority for Approving & Sending
Blast Email to Official Oakland.edu email	Communications & Marketing	OUPD	Director of Campus Comm.
Flyers on Key Buildings	OUPD	Communications & Marketing	Chief of Police
Text Message	OUPD	Communications & Marketing	Director of Campus Comm.
Posting on Police Web site	OUPD	OUPD	Chief of Police
Posting on University Web site	Communications & Marketing	Communications & Marketing	Director of Campus Comm.
Social Media (Facebook, Twitter, etc.)	Communications & Marketing	OUPD	Director of Campus Comm.
Local Television	Communications & Marketing	OUPD	Director of Campus Comm.
Police Vehicle Loudspeaker	OUPD	OUPD	Chief of Police
Electronic Digital Signage	OUPD	OUPD	Director of Campus Comm.

## Members of the Larger Community

The University has a variety of ways of disseminating emergency information to the larger community. The notification systems include the following:

- Public Media
  - Local radio and television stations.
  - The Communication and Marketing Office coordinates connections with all major media outlets to provide members of the Larger Community emergency notifications.
  - Social Media
    - Oakland University Facebook and Twitter.
    - OUPD Facebook and Twitter.
  - Warning Sirens
    - Warning sirens are strategically placed on the top of Varner Hall to sound in the event of a tornado or severe



weather warning. The sirens are tested on the first Saturday of every month at 1:00 P.M.

- Oakland University Web Site
  - The Communications and Marketing Department can update the website with pertinent information and instructions in the event of a disaster or emergency.

## The Process for Issuing Emergency Notifications

Decisions regarding issuance of emergency notifications will be made on a case-by-case basis in light of all the known facts surrounding a reported emergency or dangerous situation and the nature and extent of the immediate threat to the health or safety of students or employees.

The following sections describe the University's process for deciding when emergency notifications will be issued, who will receive the notifications, what information the notifications will contain and the method(s) that will be used to disseminate the notifications.

## Responsibility for Issuing Emergency Notifications

The OUPD is the department responsible for deciding when an emergency notification will be issued. The OUPD will, upon discovering or receiving notice of a significant emergency or dangerous situation that may require issuance of an emergency notification, internally notify the Chief of Police (or designee) through the chain of command.

If the Chief of Police (or designee) decides that an emergency notification should be issued, he or she may select one or more of the systems described above to be used to issue the emergency notification. Thereafter, the University's Media Relations department will be notified to assist in preparing the content of additional notifications, and disseminate such notifications via the method and to the segment(s) of any of the three campus communities that will receive the notifications as directed by the Chief of Police (or designee). The Media Relations department will also be responsible for the content and dissemination of any updates to the emergency notification. They will use some or all of the systems described below to issue follow up information.

**EXCEPTION:** If OUPD discovers or receives notice of a significant emergency or dangerous situation that may require issuance of an emergency notification, and the OUPD concludes that an emergency notification should be issued before the Chief of Police (or designee) can be notified, then the highest ranking on-duty OUPD officer may immediately issue an emergency notification utilizing the process described above.

As soon as reasonably possible thereafter, on duty members of the OUPD will ensure the Chief of Police (or designee) is notified internally through the chain of command. Once notified, the Chief of Police (or designee) shall ensure the above notification process is being followed and will then be responsible for notifying designated University administrators through the chain of command.

## Safety Alert

A situation may exist where a possible crime or threat is occurring outside of Oakland University geography. OUPD will assess on a case by case basis whether or not to send out a safety advisory alert utilizing any method deemed appropriate. These circumstances do not fall into the Clery definition of a Timely Warning or Emergency Notification but will be designated as safety alerts.

## Signing up for Emergency Notifications

When an incident takes place on campus that may represent a continuing threat, OU Police will notify the campus community in a timely manner. Because no single system is capable of reaching everyone, everywhere, every time, OU Police maintains several different ways to communicate a message in an emergency.

Students faculty and staff are automatically enrolled in the RAVE emergency text messaging system. This is an opt out service only and to opt out go [oakland.edu/police](https://oakland.edu/police).

All Other Users (Visitors, Contractors, Parents, etc.) can text the phrase “oualert” without quotes to 67283 to enroll in the emergency alert system for 365 days. You will be automatically un-enrolled in the OU emergency alert system at the end of the 365 day period.

## Emergency Preparedness, Response, Evacuation, and Testing Procedures

The Emergency Text Messaging System is tested University-wide each fall and winter semester. Such tests are announced beforehand to the campus community by the Chief of Police via campus-wide e-mail messages, along with web site announcements.

During such announcements, the campus community is encouraged to review the University’s Emergency Preparedness website, located at <https://oakland.edu/police/emergency-management/>.<sup>1</sup> The Emergency Preparedness web site provides information to the campus community regarding procedures for various potential emergency events, including official closings, lock downs, emergency evacuations, tornado and severe weather warnings, psychological emergencies, bomb threats and hazardous materials. The Emergency Preparedness website also includes information on Communications, Violence Prevention Training, Infection Prevention & Control, the Crisis Management Team and relevant University policies.

In addition, all classroom and laboratory facilities, along with a number of administrative offices and other areas throughout the Main Campus, have an Emergency Preparedness Guide posted in conspicuous locations. The Guide, which is red in color, is an easily recognized ready reference outline of campus emergency procedures.

General information about emergency response and evacuation procedures, including without limitation information about the University’s Emergency Preparedness website, is also publicized each year as part of the University’s Clery Act compliance efforts.

Additional emergency preparedness and testing activities include the following:

- The University’s Executive Policy Group annually participates in briefings which include various emergency “table top” and practical scenario-based training exercises. Depending upon the nature of the training, other local, state and federal agencies may be involved in the training.
- Announced and unannounced emergency evacuation drills are conducted at minimum eight (8) times each academic year in all residence halls. The Office of University Housing maintains documentation of all drills.
- The University’s fire alarm system on the Main Campus is tested campus-wide annually. Documentation is maintained by the Office of Environmental Health and Safety.
- The University’s outdoor early warning system on the Main Campus is tested in conjunction with all other Oakland County jurisdictions on the first Saturday of every month April through November. The University will use campus-

---

<sup>1</sup> This document contains links. If the link does not work when you click on it copy the link and paste into a browser.

wide e-mail to publicize the emergency procedures contained in the Emergency Management website (<https://oakland.edu/police/emergency-management/>).

- Emergency text messaging and e-mail notification systems are tested at least annually.
- The Emergency Blue Light phones on the Main Campus are generally tested monthly. Testing is conducted by assigned OUPD personnel and the OUPD maintains documentation of each test.
- The OUPD regularly communicates with local police requesting their cooperation in informing the OUPD about situations reported to them that may warrant a timely warning or emergency notification.
- Macomb University Center has evacuation procedures in place and posted throughout the buildings at all locations.

## Evacuation Procedures

Periodically, there will be conditions or situations that may warrant the closure of Oakland University, cancellation of classes and/or early releases. Such conditions could also warrant the immediate evacuation of the entire campus (or specific portions). Generally, during the cancellation of classes or early releases, it is not mandatory that facilities be vacated. However, when there may be a potential imminent danger to occupants (such as fire alarm, gas leak, etc.) evacuation of the facilities affected is mandatory.

The procedures for early release of employees, cancellation of classes, and emergency closing of the university due to severe weather conditions, non-functioning of university building systems, or other unforeseen circumstances, are outlined in [Administrative Policy # 482](#).<sup>2</sup>

## Notification Procedure

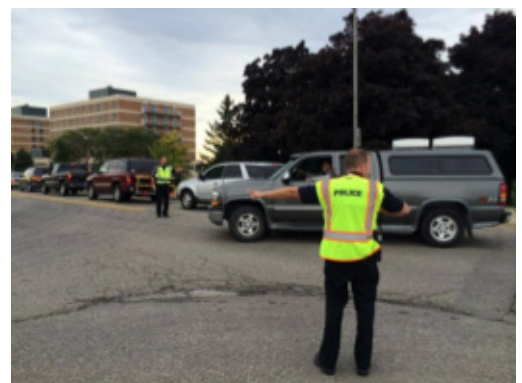
The notification to evacuate may come from a variety of sources, including one or more of the following:

- Emergency text message
- Campus-wide email broadcast
- OU home page
- Local television/radio
- Loudspeaker announcements from patrolling police vehicles
- Social media (OUPD and OU accounts)



University Housing has developed pre-planned evacuation procedures for all residential facilities. In addition, Academic Affairs has developed procedures to notify staff and/or students in their respective areas in the event of a closure/evacuation during normal business hours and while classes are in session. These procedures are reviewed and shared periodically.

Every individual should become familiar with their own area by locating exits, stairwells, elevators, fire fighting equipment, fire alarms and established areas of refuge. Places of refuge can be in a protected stairway or a room within the structure generally used in fire situations. Ideally, these areas are especially constructed to resist smoke and heat or equipped with a sprinkler system.



## Evacuation Protocol

<sup>2</sup> This document contains links. If the link does not work when you click on it copy the link and paste into a browser.

- Elevators are not to be used during evacuations.
- Once evacuated, members of the campus community should remain at least 500 feet away from the exterior of the building or location evacuated (or as otherwise directed by the OUPD).
- Occupants of evacuated buildings will not be allowed to return to the building prior to 30 minutes after the stated time of detonation (or as otherwise directed by the OUPD).
- As additional safety precautions, smoking and/or the use of handheld electronic devices, including two-way radios, cell phones, etc., are prohibited inside and within 500 feet outside of any building or location in which there is a potential bomb.

## Individuals with physical limitations

Even though emergency personnel are usually available to assist with evacuation, this may not always be the case. Those with mobility concerns or other concerns making independent evacuation difficult are encouraged to make alternate plans and arrangements in advance which will increase the likelihood these individuals will be able to exit a facility safely in the event of an emergency.

For those who have difficulty speaking or those with hearing impairments, it may be useful to carry a whistle or a similar device for the purpose of announcing their location to emergency personnel searching for those in need of assistance.

Individuals with physical limitations impacting their evacuation speed should advise others (supervisors, administrators, instructors, colleagues, fellow students) about any concerns related to emergency exiting and how others should assist them in the event of an emergency. This can include assistance to exits, areas of refuge and alerting emergency personnel of the individual's location.

## Missing Students - Notification Policies and Procedures

Generally, a student is presumed to be missing if he or she is overdue in reaching a destination (home, campus, etc.) for more than 24 hours past his or her expected time of arrival. A student may also be presumed to be missing if any unusual circumstances are present (i.e. evidence of the possibility of foul play, etc.) as determined by the OUPD.

All members of the campus community share in the responsibility for immediately reporting to OUPD when they believe a student may be missing. OUPD will follow appropriate law enforcement protocol for conducting an investigation in accordance with the Clery Act, Suzanne's Law and Adam Walsh Act.

## Missing Residential Students Specifically - Notification Policies and Procedures

A residential student is defined as a student who resides in on-campus housing under a housing contract and is currently enrolled at the University. The following notification policies and procedures apply specifically to residential students:

- All residential students shall be provided an option on an annual basis (except as designated below) to identify a contact person(s) to be notified by the University in the event they are determined to be missing by the OUPD or an appropriate local law enforcement agency. A student can submit a request to University Housing that the contact remain confidential. In such cases, the notification shall be made within 24 hours of the determination that the student is missing.
- Students' contact information will be registered confidentially with University Housing. This information will be

accessible only to authorized campus officials and it may not be disclosed, except to law enforcement personnel in furtherance of a missing person investigation.

- For students who are under 18 years of age and are not emancipated, their custodial parent or guardian and any other designated contact person (they have designated) will be notified within 24 hours that the student is missing.
- Generally, such notifications to parents, guardians or designated contact persons shall be made by a designated University official.
- Regardless of whether the student has identified a contact person, is above the age of 18, or is an emancipated minor, OU will inform the local law enforcement with jurisdiction in the area the student went missing that the student is missing within 24 hours.

## Center for Multicultural Initiatives

The Center for Multicultural Initiatives is responsible for addressing the particular needs of minority students on campus. The staff responds to individual student concerns and develops or supports programs designed to enhance the diversity of the University. Questions or concerns may be addressed to the Senior Director, Center for Multicultural Initiatives, North Foundation Hall Room 104, (248) 370-4404.

## Responsibilities of Students and Employees

A safe university environment cannot be achieved solely by the OUPD. The safest environment is achieved with the involvement and cooperation of all members of the campus community. Every member of the campus community, including without limitation faculty, students, staff and campus visitors must assume responsibility for their own personal safety, and the security of their belongings by taking simple, common sense precautions. The sense of responsibility should also be extended to others. For example, although the campus is well lit, students should not walk alone after dark and should “buddy up” whenever possible while walking about the campus. Even though you know your neighbor, your room should be locked when left unattended. Valuable items such as computers and televisions should be marked with engraving instruments. Students with cars should keep all valuables locked in the trunk and doors locked when the vehicle is left unattended.

All members of the campus community should immediately report to the OUPD any unusual circumstance or suspicious looking individual whom they feel does not belong in the residence halls or any campus facility

## Off-Campus Organizations

The University does not formally monitor or record criminal activity by students at non campus locations. However, any criminal activity at the Theta Chi Fraternity, a noncampus organization located in Pontiac, Michigan, is reported to the University via a positive working relationship between the Oakland County Sheriff's Department and the OUPD.



## Disclosure of Crime Statistics

Each Annual Security & Fire Safety Report includes statistics on the following crimes which have been reported to OUPD and/or Campus Security Authorities:

- Murder and non-negligent manslaughter;
- Negligent manslaughter
- Sex offenses (rape, fondling, incest, statutory rape)
- Domestic violence & dating violence
- Stalking
- Robbery
- Aggravated assault
- Burglary
- Motor vehicle theft
- Arson
- Arrests and/or disciplinary referrals for liquor law violations, drug law violations and/or illegal weapon possessions
- Hate crimes include the above referenced crimes, as well as larceny-theft, simple assault, intimidation, destruction/damage/vandalism of property and any other crime involving bodily injury, that manifest evidence that the victim was intentionally selected because of the victim's actual or perceived race, gender, religion, national origin, sexual orientation, gender identity, ethnicity or disability.

All crime statistics are classified based on the Federal Bureau of Investigation's Uniform Crime Reporting Handbook (UCR).

At any given time throughout the year, the most recently published Security and Fire Safety Report statistics can be accessed on-line at <https://oakland.edu/police>.<sup>3</sup>

The OUPD also maintains a daily crime log with statistics on the reported crimes previously listed. The crime log can be accessed on-line at <https://oakland.edu/police>.

The screenshot shows the Oakland University Police Department website. At the top, there is a search bar and a navigation menu with links for HOME, EMERGENCY MANAGEMENT, INSIDE OUPD, NEWS ROOM, SERVICES, CAMPUS SAFETY, and CONTACT US. The main content area is titled "Activity Log" and includes a brief description of the log, a note about arrests, and contact information for records. Below this, there is a form to select a date to view, with a "Date:" label and a text input field. A "Submit" button is located below the input field. Two example incident entries are shown at the bottom of the page:

Incident No: 180013521  
Incident: L3545-AREA CHECK - OU  
Reported: 9/26/20 18 01:51  
Occurred:  
Status: Open  
Location: 350 ESTATE DR  
Disposition:

Incident No: 180013522  
Incident: L3508-BUILDING CHECK - OU  
Reported: 9/26/20 18 01:55

<sup>3</sup> This document contains links. If the link does not work when you click on it copy the link and paste into a browser.

## Non-Campus Academic Sites

Oakland University conducts academic classes at a number of off-campus sites in various parts of the State of Michigan. Crime statistics for these specific locations are identified, gathered and also reported annually as previously described.



**OAKLAND UNIVERSITY MAIN CAMPUS  
2021-2023**

Offense	On Campus Property			On Campus Student Housing *			Non Campus Property			Public Property		
	2021	2022	2023	2021	2022	2023	2021	2022	2023	2021	2022	2023
	Murder / Non-Negligent Manslaughter	0	0	0	0	0	0	0	0	0	0	0
Negligent Manslaughter	0	0	0	0	0	0	0	0	0	0	0	0
Rape	3	5	5	2	4	5	0	3	1	0	0	0
Fondling	3	1	1	2	1	1	0	0	0	0	0	0
Incest	0	0	0	0	0	0	0	0	0	0	0	0
Statutory Rape	0	0	0	0	0	0	0	0	0	0	0	0
Robbery	0	0	1	0	0	0	0	0	8	0	0	0
Aggravated Assault	1	1	0	0	0	0	0	2	3	0	0	0
Burglary	2	1	2	0	0	0	0	9	0	0	0	0
Motor Vehicle Theft	2	1	1	0	0	0	1	3	10	0	0	0
Arson	0	0	0	0	0	0	1	0	0	0	0	0
Domestic Violence	0	1	0	0	0	0	0	1	1	0	0	0
Dating Violence	1	2	4	1	0	3	0	0	1	0	0	0
Stalking	14	8	9	2	5	4	0	1	2	0	0	0
Arrests: Illegal Weapons	0	0	0	0	0	0	0	2	2	0	0	0
Arrests: Drug Law Violations	1	0	0	0	0	0	1	4	0	0	0	0
Arrests: Liquor Law Violations	0	1	0	0	0	0	0	1	0	0	0	0
Disciplinary Actions	On Campus Property			On Campus Student Housing			Non Campus Property			Public Property		
	2021	2022	2023	2021	2022	2023	2021	2022	2023	2021	2022	2023
	Referral: Illegal Weapons	0	0	0	0	0	0	0	0	0	0	0
Referral: Drug Law Violations	14	0	0	13	0	0	0	0	0	0	0	
Referral: Liquor Law Violations	19	30	1	19	30	1	0	0	0	0	0	

Not all law enforcement agencies responded to requests for crime statistics related to non-campus locations and separate campuses.

**Hate Crimes**

2023: One on-campus destruction/damage/vandalism of property characterized by National Origin bias

2022: No hate crimes were reported.

2021: No hate crimes were reported.

**Unfounded**

2023: No unfounded crime.

2022: No unfounded crime.

2021: One unfounded crime.

**OAKLAND UNIVERSITY ANTON/FRANKEL CENTER  
2021-2023**

Offense	On Campus Property			On Campus Student Housing			Non Campus Property			Public Property		
	2021	2022	2023	2021	2022	2023	2021	2022	2023	2021	2022	2023
	Murder / Non-Negligent Manslaughter	0	0	-	0	0	-	0	0	-	0	0
Negligent Manslaughter	0	0	-	0	0	-	0	0	-	0	0	-
Rape	0	0	-	0	0	-	0	0	-	0	0	-
Fondling	0	0	-	0	0	-	0	0	-	0	0	-
Incest	0	0	-	0	0	-	0	0	-	0	0	-
Statutory Rape	0	0	-	0	0	-	0	0	-	0	0	-
Robbery	0	0	-	0	0	-	0	0	-	0	0	-
Aggravated Assault	0	0	-	0	0	-	0	0	-	0	0	-
Burglary	0	0	-	0	0	-	0	0	-	0	0	-
Motor Vehicle Theft	0	0	-	0	0	-	0	0	-	0	0	-
Arson	0	0	-	0	0	-	0	0	-	0	0	-
Domestic Violence	0	0	-	0	0	-	0	0	-	0	0	-
Dating Violence	0	0	-	0	0	-	0	0	-	0	0	-
Stalking	0	0	-	0	0	-	0	0	-	0	0	-
Arrests: Illegal Weapons	0	0	-	0	0	-	0	0	-	0	0	-
Arrests: Drug Law Violations	0	0	-	0	0	-	0	0	-	0	0	-
Arrests: Liquor Law Violations	0	0	-	0	0	-	0	0	-	0	0	-
Disciplinary Actions	On Campus Property			On Campus Student Housing			Non Campus Property			Public Property		
	2021	2022	2023	2021	2022	2023	2021	2022	2023	2021	2022	2023
	Referral: Illegal Weapons	0	0	-	0	0	-	0	0	-	0	0
Referral: Drug Law Violations	0	0	-	0	0	-	0	0	-	0	0	-
Referral: Liquor Law Violations	0	0	-	0	0	-	0	0	-	0	0	-

Not all law enforcement agencies responded to requests for crime statistics related to non-campus locations and separate campuses.

Anton Frankel Center ceased operation in April of 2023. Per the campus safety hotline, no statistics are given for the 2023 calendar year, as this campus had no student housing.

**Hate Crimes**

2023: No hate crimes were reported.

2022: No hate crimes were reported.

2021: No hate crimes were reported.

**Unfounded**

2023: No unfounded crimes.

2022: No unfounded crimes.

2021: No unfounded crimes.

**OAKLAND UNIVERSITY MACOMB UNIVERSITY CENTER  
2021-2023**

Offense	On Campus Property			On Campus Student Housing			Non Campus Property			Public Property		
	2021	2022	2023	2021	2022	2023	2021	2022	2023	2021	2022	2023
	Murder / Non-Negligent Manslaughter	0	0	0	0	0	0	0	0	0	0	0
Negligent Manslaughter	0	0	0	0	0	0	0	0	0	0	0	0
Rape	0	0	0	0	0	0	0	0	0	0	0	0
Fondling	0	0	0	0	0	0	0	0	0	0	0	0
Incest	0	0	0	0	0	0	0	0	0	0	0	0
Statutory Rape	0	0	0	0	0	0	0	0	0	0	0	0
Robbery	0	0	0	0	0	0	0	0	0	0	0	0
Aggravated Assault	0	0	0	0	0	0	0	0	0	0	0	0
Burglary	0	0	0	0	0	0	0	0	0	0	0	0
Motor Vehicle Theft	1	0	0	0	0	0	0	0	0	0	0	0
Arson	0	0	0	0	0	0	0	0	0	0	0	0
Domestic Violence	0	0	0	0	0	0	0	0	0	0	0	0
Dating Violence	0	0	0	0	0	0	0	0	0	0	0	0
Stalking	0	0	0	0	0	0	0	0	0	0	0	0
Arrests: Illegal Weapons	0	0	0	0	0	0	0	0	0	0	0	0
Arrests: Drug Law Violations	0	0	0	0	0	0	0	0	0	0	0	0
Arrests: Liquor Law Violations	0	0	0	0	0	0	0	0	0	0	0	0
Disciplinary Actions	On Campus Property			On Campus Student Housing			Non Campus Property			Public Property		
	2021	2022	2023	2021	2022	2023	2021	2022	2023	2021	2022	2023
	Referral: Illegal Weapons	0	0	0	0	0	0	0	0	0	0	0
Referral: Drug Law Violations	0	0	0	0	0	0	0	0	0	0	0	0
Referral: Liquor Law Violations	0	0	0	0	0	0	0	0	0	0	0	0

Not all law enforcement agencies responded to requests for crime statistics related to non-campus locations and separate campuses.

**Hate Crimes**

2023: No hate crimes were reported.

2022: No hate crimes were reported.

2021: No hate crimes were reported.

**Unfounded**

2023: No unfounded crimes.

2022: No unfounded crimes.

2021: No unfounded crimes.



# Part Two - Annual Campus Fire Safety Report

The Annual Campus Fire Safety Report contained herein is prepared and published in accordance with the requirements of The Campus Fire Safety Right-To-Know Act and its implementing regulations (34 CFR 668.41 and 34 CFR 668.49). The purpose of this Report is to provide faculty, staff, students and campus visitors (collectively, the “campus community”) with an overview of Oakland University’s fire safety systems, resources, policies, procedures and fire statistics. These policies and procedures are subject to change at any time.

## Fire Reporting

The reporting of any fire in progress should be made to the Oakland University Police Dispatcher by dialing extension 3331 from a campus phone or (248) 370-3331 from a cell phone. Activation of any fire detection and/or notification systems in an on campus building that is continuously monitored will be reported directly to the Police Dispatcher via the campus fire alarm reporting system. In which case, the Oakland University Police will dispatch appropriate emergency personnel. Activation of any fire detection and/or notification system in a reasonably contiguous, on campus building that is continuously monitored, will be reported directly to a third party monitoring company who will contact the appropriate emergency personnel.

In addition, the following notifications will be made:

- Environmental Health and Safety Representative (on call)
- University Housing Duty Hall Director (on call)
- Facilities Management Personnel (on call)

The reporting of any fire that has occurred and was not reported immediately to the Oakland University Police Dispatcher should be reported to the Oakland University Police Department as soon as practical by dialing extension 3331 from a campus phone or (248) 370-3331 from a cell phone.

Additional reporting as required by Michigan Public Act 207 of 1941 (2016) and Administrative rules for New and Existing School, College and University Fire Safety (R 29.1907a), Rule 7a and Dormitory Fire Safety for Schools, Colleges, and Universities (R 29.2010) Rule 10 which requires that “upon discovery of any unwanted fire, regardless of magnitude”, authorities which may include Oakland University Police Department, and the local fire department be immediately notified. In addition “The school authority or designee shall notify the bureau of fire services of all details of the fire not later than the end of the next business day following the incident

## On Campus Student Housing Facility Fire Safety System

OAKLAND UNIVERSITY ON CAMPUS STUDENT HOUSING FACILITY FIRE SAFETY SYSTEM					
Main Campus Residence Halls	Partial Sprinkler System	Full Sprinkler System	Smoke Detection Devices	Fire Extinguisher Devices	Evacuation Plans / Placards
Ann V. Nicholson Apartments, 1000 Meadow Brook Road		Yes	Yes	Yes	Yes
Ann V. Nicholson Apartments, 2000 Meadow Brook Road		Yes	Yes	Yes	Yes
Ann V. Nicholson Apartments, 3000 Meadow Brook Road		Yes	Yes	Yes	Yes
Ann V. Nicholson Apartments, 5000 Meadow Brook Road		Yes	Yes	Yes	Yes
Ann V. Nicholson Apartments, 6000 Meadow Brook Road		Yes	Yes	Yes	Yes
Ann V. Nicholson Apartments, 7000 Meadow Brook Road		Yes	Yes	Yes	Yes
George T. Matthews Townhomes 572-596 Meadow Brook Road, 620-700 Ravine Drive	No	No	Yes	Yes	Yes
415 Adams (Cottage), 415 South Adams Road		Yes	Yes	Yes	Yes
437 Adams (Cottage), 437 South Adams Road		Yes	Yes	Yes	Yes
449 Adams (Cottage), 449 South Adams Road		Yes	Yes	Yes	Yes
461 Adams (Cottage), 461 South Adams Road		Yes	Yes	Yes	Yes
Oak View Hall, 509 Meadow Brook Road		Yes	Yes	Yes	Yes
Hamlin Hall, 550 Meadow Brook Road		Yes	Yes	Yes	Yes
Hill House, 522 Meadow Brook Road	Yes	No	Yes	Yes	Yes
Van Wagoner House, 540 Meadow Brook Road	Yes	No	Yes	Yes	Yes
Vandenberg Hall, 502 Meadow Brook Road		Yes	Yes	Yes	Yes
Fitzgerald House, 614 Pioneer Drive	Yes	No	Yes	Yes	Yes
Hillcrest Hall, 273 Grizzly Lane		Yes	Yes	Yes	Yes
Frances M. Mocerri Scholar House		Yes	Yes	Yes	Yes

\*Van Wagoner House was closed for all of 2023.

University student housing facilities, including Residence Halls, Ann V. Nichols student apartments, George T. Matthews townhomes and the Greek cottage district are monitored continuously by the University's Campus Fire Alarm Reporting System (CFAR). The system, a proprietary supervising station fire alarm system has been installed and is inspected and maintained in accordance with NFPA 72 1997, National Fire Alarm Code. Per the standard, the system consists of the proprietary supervising station located at Oakland University Police Department (OUPD) Dispatch Center at the Police and Support Services (PSS) Building. This is a protected property at which trained, competent personnel monitor the system at all times. Additionally, the system consists of power supplies (back-up batteries), signal initiating devices (detectors), initiating device circuits, signal notification appliances (speakers, strobes), equipment for the automatic permanent visual recording of signals (Alarm Computer Panel and Printers) and equipment for initiating the operation of emergency building control services (fan shut-downs, magnetic door holds, roll-down fire doors). All CFAR fire alarm panels, including those in student housing facilities are connected through a fiber optic network to a main network display and control terminal located in the OUPD Dispatch Center of the PSS building. A second display and control terminal is located in the Environmental Health and Safety offices at the Graham Health Center.

In addition to its position on the campus fiber optic network, each fire alarm panel acts as a standalone, addressable fire detection and notification system for the building that it is located in. These systems provide for fire detection through smoke detectors located throughout the building, duct smoke detectors located in HVAC systems, and the monitoring of water flow through standpipes or sprinkler piping. Detection may also come from the activation of a manual pull station located near an

exit. Each system also provides for evacuation notification to the occupants by both visual and audible means. Siemens Model MXL systems use a standard evacuation horn tone along with the activation of strobe lights. Siemens Model MXLV systems use a voice evacuation message along with the activation of strobe lights.

Smoke detection in all Residence Halls, corridors of Ann V. Nicholson student apartments, George T. Matthew student apartments, and Greek cottages are fully addressable and when activated, report an immediate alarm to OUPD Dispatch which includes a specific address and building location.

Building suppression systems are equipped with waterflow monitors, which are fully addressable and report to the CFAR system. A partial sprinkler system means a sprinkler system that may be installed to protect a specific area or hazard within a building. A full sprinkler system means a sprinkler system installed to cover all areas of the building, regardless of specific hazards.

Oakland University does not currently own any properties that meet the Clery definition of on campus housing that are not part of the contiguous property known as main campus, located in Rochester, MI.

Fire alarm systems, emergency equipment and fire safety equipment are also addressed in the [Administrative Policy #640 \(Oakland University Ordinances\)](#), [Administrative Policy #620 \(Environmental Health and Safety\)](#) and The [University Housing Student Handbook/Policies/Fire Safety](#) as follows

- o [Administrative Policy #640 \(University Ordinances\)](#) 4.11b Fire Alarms and Emergency Equipment.
- o [University Housing Handbook /Policies/Fire Safety](#)
- o [Administrative Policy #620 \(Env. Health and Safety\)](#), Section E. Fire Protection Equipment

## Fire Drills

Announced and unannounced emergency evacuation drills are conducted in accordance with [Michigan Fire Prevention Code - Public Act 207 of 2014 \(Eff. March 31, 2015\)](#), which requires each postsecondary educational institution dormitory hold one fire drill a) each fall semester within 21 days after the start of classes; b) each spring semester; and c) each summer semester if the dormitory is occupied by students during that semester. Of the fire drills conducted in the fall or spring at least one must occur while school is in session and between sunset and sunrise. The Office of University Housing maintains documentation of all drills.

Residence Hall / Dormitory	Number of Evacuation (Fire Drills) in 2023
Hamlin Hall, 550 Meadow Brook Road	3
Hillcrest Hall, 273 Grizzly Lane	3
Oak View Hall, 509 Meadow Brook Road	3
Vandenberg Hall, 502 Meadow Brook Road	3

## Portable Electric Appliances, Smoking, and Open Flames in a Student Housing Facility

1. Portable Electrical Appliances that generate or produce radiant heat, including hot plates, grills or space heaters are prohibited in Residence hall rooms, as outlined in the University Housing Handbook and in compliance with fire code. University Student Apartments, Townhomes, and Greek Cottages are equipped with code compliant kitchen and laundry facilities and mechanical heating and cooling.
2. Oakland University is a smoke-free campus. Smoking is prohibited on all University owned or operated Campuses and Grounds, and in all University owned or operated Buildings and vehicles in accordance with Oakland University [Administrative Policy #475 \(Smoke-free Campus\)](#). This includes all student housing. Complaints involving smoking by residence hall students and their guests can be made to: University Housing at 248-370-3570 and/or the Dean of Students Office, 144 Oakland Center, 248-370-3352.
3. Open burning is prohibited in the residence halls and on the campus in accordance with [Administrative Policy #640 \(University Ordinance\) 4.11a Fires](#). Maintenance employees and contractors are required to adhere to the University's [Hot Work Permit Program](#), which is administered through the Office of Environmental Health and Safety. Permissions for bonfires and barbecues are subject to the review and approval of the Office of Environmental Health and Safety and/or the Oakland University Police Department. The Director of Oakland University Police and all Police Officers are responsible for the control of fires on campus and for the establishment of reasonable rules and regulations to minimize the hazards of fire, per University Ordinance 2.07 Fire Protection.

## Procedures for Evacuation in the Case of Fire

In accordance with University Policy (Oakland University Housing Handbook, and [Oakland University Administrative Policy #620 Section B](#)), when an emergency evacuation alarm is sounded in any University building, including student housing, all persons will **immediately** leave the building in an orderly manner by means of the nearest exit. The use of elevators is prohibited during an emergency evacuation and all persons are to remain at least 100 feet away from an evacuated building to enable rescue/responding vehicles and personnel clear access. Under no circumstances are any employees or students to remain in, or return to, an evacuated building, unless they first secure the permission of the responding authority having jurisdiction (OUPD or other Police/Fire).

## Fire Safety Education and Training Programs

The Environmental Health and Safety Office offers a variety of fire safety training including fire extinguisher training and annual general fire safety training for Residence Hall Student Staff. In addition, the office prepares and delivers target specific training for Residence Hall floors, student organizations and faculty and staff, and hosts specialized evacuation/practice drills and community fire-safety information programs in conjunction with community emergency response partners. Fire safety topics include advising students in methods to locate and maintain appropriate egress from every space, promoting awareness of behaviors that contribute to fires and fire-related injuries and deaths and educating students on the dangers of smoke inhalation. In addition to standard emergency evacuation procedures, students are advised how to protect themselves and signal emergency responders in the event that egress from their space is not possible (Reference Oakland University Administrative Policy #620, Section B).

## Fire Statistics

In 2008 the Higher Education Opportunity Act (HEOA) expanded and reauthorized the Higher Education Act (HEA) of 1965. The resulting amendments include mandatory annual reporting of fire statistics beginning with statistics generated during Calendar Year 2009. Those statistics have been compiled and are included as part of a separate section in the attached table of crime statistics. Data will continue to be collected and reported annually in this manner in accordance with the provisions of the HEOA.

## Fire Log

A daily fire log is available for review at the Graham Health Center building, during normal business hours, excluding holidays. In accordance with the amendments of the HEOA, The information in the fire log typically includes information about fires that occur in residential facilities, including the nature, date, time, and general location.



## Future Improvements

The University recognizes that the fire and life safety systems on campus require a process of constant preventative maintenance and improvement. Projects planned for the coming year include:

- Research Innovation Center, Rochester Hills (multi-year renovation 22-24) – new Siemens XLS fire alarm system, suppression
- Continuation of West Campus suppression system installation as new areas are renovated for occupancy (main plumbing runs were completed in summer 2023), heads will be installed in coordination with future renovation activities (multi-year renovation project 23-25)
- South Foundation Hall (multi-year renovation project 23-24) new Siemens XLS, suppression
- Varner Hall (multi-year renovation project 23-24) new Siemens XLS system and suppression
- O’dowd Hall (multi-year renovation project 23-24) new Siemens XLS system
- Continuation of Siemens life safety panel migration project to upgrade first generation Siemens MXL fire alarm systems to the latest Siemens Firefinder XLS platform:
  - BRSF (Animal Care)
  - Recreational Athletics Center (RAC)
  - Police and Support Services Building (PSS)
  - Spencer Substation
  - Danny’s Cabin (on the Meadow Brook Hall Historic Estate)
  - Meadowbrook Hall Main House (Meadow Brook Hall Historic Estate)
  - John Dodge House
- Ann V. Nicholson Apartments – XLS panel installation in 2023, initiating device upgrades 2024

These plans are intended, barring any unforeseen circumstances such as budgetary restrictions.



**OAKLAND UNIVERSITY  
2021 FIRE STATISTICS**

Fire	Facility	Attendance	Fire-Related		Cause Category	Cause Description	Value of Property Damage
			Injury	Death			
0	AVN Apartments, 1000 Meadow Brook Road						
0	AVN Apartments, 2000 Meadow Brook Road						
0	AVN Apartments, 3000 Meadow Brook Road						
0	AVN Apartments, 5000 Meadow Brook Road						
0	AVN Apartments, 6000 Meadow Brook Road						
0	AVN Apartments, 7000 Meadow Brook Road						
0	George T. Matthews Townhomes 572-596 Meadow Brook Road, 620-700 Ravine Drive						
0	Hamlin Hall, 550 Meadow Brook Road						
0	Hillcrest Hall, 273 Grizzly Lane						
0	Van Wagoner House, 540 Meadow Brook Road						
0	Vandenberg Hall, 502 Meadow Brook Road						
0	415 Adams (Cottage), 415 South Adams Road						
0	437 Adams (Cottage), 437 South Adams Road						
0	449 Adams (Cottage), 449 South Adams Road						
0	461 Adams (Cottage), 461 South Adams Road						
0	Oak View Hall, 509 Meadow Brook Road						
<b>0</b>	<b>Total</b>						

**No Reportable Fires in 2021**

**OAKLAND UNIVERSITY  
2022 FIRE STATISTICS**

Fire	Facility	Attendance	Fire-Related		Cause Category	Cause Description	Value of Property Damage
			Injury	Death			
0	AVN Apartments, 1000 Meadow Brook Road						
0	AVN Apartments, 2000 Meadow Brook Road						
0	AVN Apartments, 3000 Meadow Brook Road						
0	AVN Apartments, 5000 Meadow Brook Road						
0	AVN Apartments, 6000 Meadow Brook Road						
0	AVN Apartments, 7000 Meadow Brook Road						
0	George T. Matthews Townhomes 572-596 Meadow Brook Road, 620-700 Ravine Drive						
0	Hamlin Hall, 550 Meadow Brook Road						
2	Hillcrest Hall, 273 Grizzly Lane 2022-04-21	Y	N	N	Unintentional	Incense caught paper towel on fire, student resident extinguished	\$0-99.00
	Hillcrest Hall, 273 Grizzly Lane 2022-10-26	Y	N	N	Unintentional	Trash Fire, extinguished by Residential Director	\$0-99.00
0	Van Wagoner House, 540 Meadow Brook Road*						
0	Vandenberg Hall, 502 Meadow Brook Road						
0	415 Adams (Cottage), 415 South Adams Road						
0	437 Adams (Cottage), 437 South Adams Road						
0	449 Adams (Cottage), 449 South Adams Road						
0	461 Adams (Cottage), 461 South Adams Road						
0	Oak View Hall, 509 Meadow Brook Road						
<b>2</b>	<b>Total</b>						

\*Van Wagoner House was closed and not occupied during the summer and fall semester 2022 and all of 2023

**OAKLAND UNIVERSITY  
2023 FIRE STATISTICS**

Fire	Facility	Attendance	Fire-Related		Cause Category	Cause Description	Value of Property Damage
			Injury	Death			
0	AVN Apartments, 1000 Meadow Brook Road						
0	AVN Apartments, 2000 Meadow Brook Road						
0	AVN Apartments, 3000 Meadow Brook Road						
0	AVN Apartments, 5000 Meadow Brook Road						
0	AVN Apartments, 6000 Meadow Brook Road						
0	AVN Apartments, 7000 Meadow Brook Road						
0	George T. Matthews Townhomes 572-596 Meadow Brook Road, 620-700 Ravine Drive						
0	Hamlin Hall, 550 Meadow Brook Road						
0	Hillcrest Hall, 273 Grizzly Lane						
0	Van Wagoner House, 540 Meadow Brook Road*						
0	Vandenberg Hall, 502 Meadow Brook Road						
0	415 Adams (Cottage), 415 South Adams Road						
0	437 Adams (Cottage), 437 South Adams Road						
0	449 Adams (Cottage), 449 South Adams Road						
0	461 Adams (Cottage), 461 South Adams Road						
0	Oak View Hall, 509 Meadow Brook Road						
<b>0</b>	<b>Total</b>						

**No Reportable Fires in 2023**

\*Van Wagoner House was closed and not occupied during the summer and fall semester 2022 and all of 2023



# Main Campus



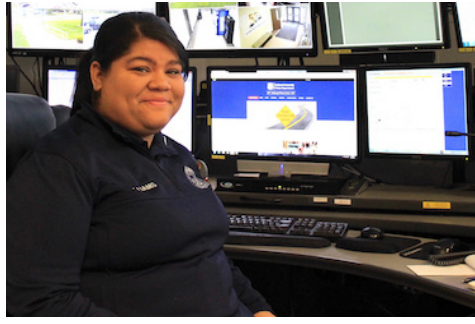


# Macomb University Center



This page left intentionally blank.

This page left intentionally blank.



## Related Addresses

**Oakland University**  
201 Meadow Brook Rd.  
Rochester, MI 48309  
(248) 370-2100

Oakland University - West Campus

**Macomb University Center**  
44575 Garfield Rd.  
Clinton Twp., MI 48038  
(586) 263-6242

**Oakland University Police Department**  
201 Meadow Brook Rd.  
Rochester, MI 48309  
(248) 370-3331





Oakland University  
Police Department

201 Meadow Brook Rd. | Rochester, MI 48309  
(248) 370-3331 | [www.oupolice.com](http://www.oupolice.com) | [info@oupolice.com](mailto:info@oupolice.com)